



HEAVY DUTY
FIRE FIGHTING
EQUIPMENT





FIRE PUMP SYSTEM	01
MOBILE PUMP UNIT	51
DIESEL FIRE PUMP	76
ELECTRIC FIRE PUMP	97

FIREFEX

FIRE PUMP SYSTEM

HEAVY DUTY
FIRE FIGHTING
 EQUIPMENT



ADVANTAGES

The outdoor fire pump set can be customized according to customer needs, and can include electric pumps, diesel engine pumps, and jockey pumps, with excellent appearance and easy installation.

In various fields, our products find applications in large hotels, hospitals, schools, office buildings, supermarkets, commercial residences, subway stations, train stations, airports, various transportation tunnels, petrochemical plants, thermal power plants, oil storage tanks, large warehouses, industrial and mining enterprises, seawater injection, etc.



Rapid Response



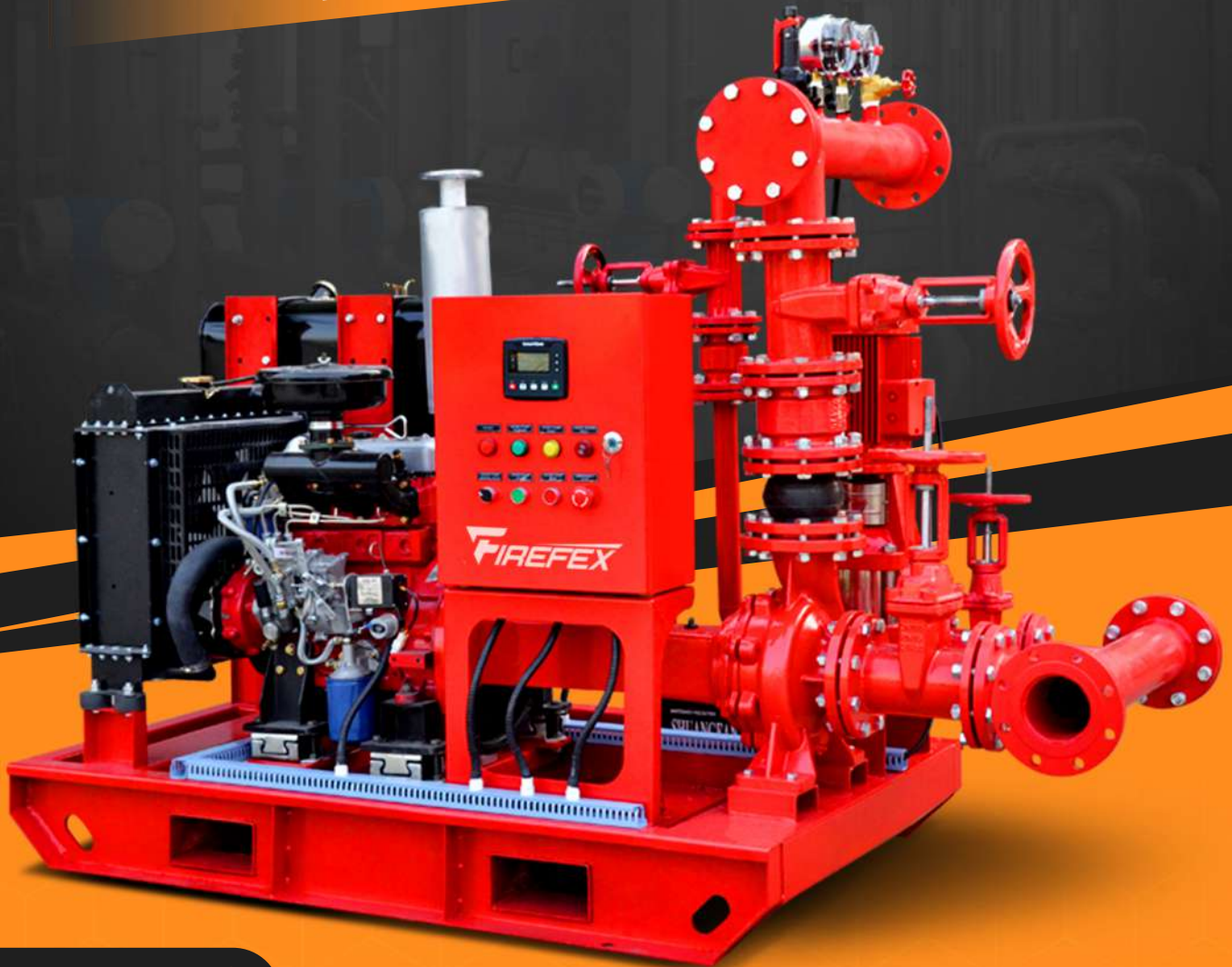
Early Detection



Fire Suppression

HEAVY DUTY

FIRE FIGHTING EQUIPMENT



ADVANTAGES

Fire Pump Packages comprises a combination of electric motor driven pump, diesel engine driven pump and electric motor driven jockey pumps that supply for fire suppression systems.

Fire Pump Packages is required to comply with Local Civil Defense Authority regulations and International Codes of Practice e.g. National Fire Protection Association (NFPA).

Provides a swift response to fire emergencies, effectively suppressing fires and minimizing damage to property and risk to life. Its presence ensures preparedness, compliance with regulations, and peace of mind for occupants and property owners.



**Rapid
Response**



**Early
Detection**



**Fire
Suppression**

SPECIFICATIONS

100GPM @4BAR					
Pump	Model	Capacity (GPM)	Head (BAR)	Power (KW)	Material
Electric	FXBD4/5-50L(50-200)	100	4	5.5	Cast Iron
Diesel Engine	XBC4/5-IS	100	4	5.5	Cast Iron
Jockey	CDL2-70	10	5	0.75	SS304
100GPM @6BAR					
Pump	Model	Capacity (GPM)	Head (BAR)	Power (KW)	Material
Electric	FXBD6/5-65L(65-250B)	100	6	7.5	Cast Iron
Diesel Engine	XBC6/5-IS	100	6	7.5	Cast Iron
Jockey	CDL2-100	10	7	1.1	SS304
200GPM @6BAR					
Pump	Model	Capacity (GPM)	Head (BAR)	Power (KW)	Material
Electric	FXBD6/10-65L(65-250)	200	6	15	Cast Iron
Diesel Engine	XBC4/5-IS	200	6	22	Cast Iron
Jockey	CDL4-90	20	7	2.2	SS304
500GPM @5BAR					
Pump	Model	Capacity (GPM)	Head (BAR)	Power (KW)	Material
Electric	FXBD5/30-100L(100-200)	500	5	22	Cast Iron
Diesel Engine	XBC5/30-IS	500	5	30	Cast Iron
Jockey	CDL12-60	50	6	4	SS304
500GPM @8BAR					
Pump	Model	Capacity (GPM)	Head (BAR)	Power (KW)	Material
Electric	FXBD8/30-100L(100-250)	500	8	37	Cast Iron
Diesel Engine	XBC8/30-D	500	8	45	Cast Iron
Jockey	CDL12-90	50	9	5.5	SS304
500GPM @10BAR					
Pump	Model	Capacity (GPM)	Head (BAR)	Power (KW)	Material
Electric	FXBD10/30-100L(100-315A)	500	10	55	Cast Iron
Diesel Engine	XBC10/30-D	500	10	55	Cast Iron
Jockey	CDL12-110	50	11	7.5	SS304
750GPM @9BAR					
Pump	Model	Capacity (GPM)	Head (BAR)	Power (KW)	Material
Electric	FXBD9/50-125L(125-250)	750	9	55	Cast Iron
Diesel Engine	XBC9/50-D	750	9	90	Cast Iron
Jockey	CDL16-90	70	10	11	SS304
750GPM @10BAR					
Pump	Model	Capacity (GPM)	Head (BAR)	Power (KW)	Material
Electric	FXBD10/50-150L(150-315A)	750	10	90	Cast Iron
Diesel Engine	XBC10/50-D	750	10	90	Cast Iron
Jockey	CDL16-100	70	11	11	SS304

HEAVY DUTY

FIRE FIGHTING EQUIPMENT



ADVANTAGES

Fire Pump Packages comprises a combination of electric motor driven pump, diesel engine driven pump and electric motor driven jockey pumps that supply for fire suppression systems.

Fire Pump Packages is required to comply with Local Civil Defense Authority regulations and International Codes of Practice e.g. National Fire Protection Association (NFPA).

Provides a swift response to fire emergencies, effectively suppressing fires and minimizing damage to property and risk to life. Its presence ensures preparedness, compliance with regulations, and peace of mind for occupants and property owners.



**Rapid
Response**



**Early
Detection**



**Fire
Suppression**

HEAVY DUTY
FIRE FIGHTING
 EQUIPMENT



ADVANTAGES

Fire Pump Packages comprises a combination of electric motor driven pump, diesel engine driven pump and electric motor driven jockey pumps that supply for fire suppression systems.

Fire Pump Packages is required to comply with Local Civil Defense Authority regulations and International Codes of Practice e.g. National Fire Protection Association (NFPA).

Provides a swift response to fire emergencies, effectively suppressing fires and minimizing damage to property and risk to life. Its presence ensures preparedness, compliance with regulations, and peace of mind for occupants and property owners.



Rapid Response



Early Detection



Fire Suppression

SPECIFICATIONS

Model	Pump				Diesel Engine			Jockey Pump		
	Flow		Head	Pressure	Model	Power	Diesel Engine	Model	Head	Power
	M3/h	GPM	Bar	Pis		KW			Bar	KW
DJ25/3	5.6	25	3	44	BTI40/40-171	4	173F	CDL2-5	3.7	0.55
DJ25/4	5.6	25	4	58	BTI40/40-171	4	173F	CDL2-6	4.5	0.75
DJ25/5	5.6	25	5	73	BTI40/40-171	4	173F	CDL2-7	5.2	0.75
DJ25/6	5.6	25	6	87	BTI40/40-171	4	173F	CDL2-9	6.7	1.1
DJ25/7	5.6	25	7	102	BTI50/50-198	6.7	186F	CDL2-10	7.5	1.1
DJ25/8	5.6	25	8	116	BTI50/50-198	6.7	186F	CDL2-12	9	1.5
DJ25/9	5.6	25	9	131	1.5GCx3	8.6	192F	CDL2-13	9.7	1.5
DJ25/10	5.6	25	10	145	1.5GCx4	9.2	195F	CDL2-14	10.5	1.5
DJ25/11	5.6	25	11	160	1.5GCx4	9.2	195F	CDL2-15	11.2	1.5
DJ25/12	5.6	25	12	174	1.5GCx5	10.2	1100F	CDL2-17	12.7	2.2
DJ30/3	6.9	30	3	44	BTI40/40-171	4	173F	CDL2-5	3.7	0.55
DJ30/4	6.9	30	4	58	BTI40/40-171	4	173F	CDL2-6	4.5	0.75
DJ30/5	6.9	30	5	73	BTI40/40-171	4	173F	CDL2-7	5.2	0.75
DJ30/6	6.9	30	6	87	BTI40/40-171	4	173F	CDL2-9	6.7	1.1
DJ30/7	6.9	30	7	102	BTI50/50-198	6.7	186F	CDL2-10	7.5	1.1
DJ30/8	6.9	30	8	116	BTI50/50-198	6.7	186F	CDL2-12	9	1.5
DJ30/9	6.9	30	9	131	1.5GCx3	8.6	192F	CDL2-13	9.7	1.5
DJ30/10	6.9	30	10	145	1.5GCx4	9.2	195F	CDL2-14	10.5	1.5
DJ30/11	6.9	30	11	160	1.5GCx4	9.2	195F	CDL2-15	11.2	1.5
DJ30/12	6.9	30	12	174	1.5GCx5	10.2	1100F	CDL2-17	12.7	2.2
DJ100/10	22.7	100	10	145	D25-30x4	20	295F	CDL2-14	10.5	1.5
DJ100/11	22.7	100	11	160	D25-30x4	20	295F	CDL2-15	11.2	1.5
DJ100/12	22.7	100	12	174	D25-30x4	20	295F	CDL2-17	12.7	2.2

HEAVY DUTY
FIRE FIGHTING
 EQUIPMENT



ADVANTAGES

Fire Pump Packages comprises a combination of electric motor driven pump, diesel engine driven pump and electric motor driven jockey pumps that supply for fire suppression systems.

Fire Pump Packages is required to comply with Local Civil Defense Authority regulations and International Codes of Practice e.g. National Fire Protection Association (NFPA).

Provides a swift response to fire emergencies, effectively suppressing fires and minimizing damage to property and risk to life. Its presence ensures preparedness, compliance with regulations, and peace of mind for occupants and property owners.



Rapid Response



Early Detection



Fire Suppression

SPECIFICATIONS

Flow GPM	Head BAR	Model	Pump Model	Motor Model	Speed	Power	Engine Model	Speed		
					RPM	KW		RPM	KW	HP
30	3	FED3/30-BD	ISW40-160	YE3-90L	2950	2.2	F173	3600	3.8	5
	4	FED4/30-BD	ISW40-200A	YE3-100L	2950	3	F173	3600	3.8	5
	5	FED5/30-BD	ISW40-200	YE3-112M	2950	4	F173	3600	3.8	5
	6	FED6/30-BD	ISW40-250B	YE3-112M	2950	4	F186FA	3600	6.3	8.6
	7	FED7/30-BD	ISW40-250A	YE3-132S1	2950	5.5	F186FA	3600	6.3	8.6
	8	FED8/30-BD	ISW40-250	YE3-132S2	2950	7.5	F186FA	3600	6.3	8.6
50	3	FED3/50-BD	ISW40-160(I)	YE3-100L	2950	3	F173	3600	3.8	5
	4	FED4/50-BD	ISW40-200A(I)	YE3-112M	2950	4	F173	3600	3.8	5
	5	FED5/50-BD	ISW40-200(I)	YE3-132S1	2950	5.5	F173	3600	3.8	5
	6	FED6/50-BD	ISW40-250B(I)	YE3-132S2	2950	7.7	F186FA	3600	6.3	8.6
	7	FED7/50-BD	ISW40-250A(I)	YE3-132S2	2950	7.5	F186FA	3600	6.3	8.6
	8	FED8/80-BD	ISW40-250(I)	YE3-160M1	2950	11	F188F	3600	7.3	9.9
80	3	FED3/80-BD	ISW50-160(I)	YE3-112M	2950	4	F173	3600	3.8	5
	4	FED4/80-BD	ISW50-200A(I)	YE3-132S1	2950	5.5	F173	3600	3.8	5
	5	FED5/80-BD	ISW50-200(I)	YE3-132S2	2950	7.5	F186FA	3600	6.3	8.6
	6	FED6/80-BD	ISW50-250B(I)	YE3-132S2	2950	7.5	F188F	3600	7.3	9.9
	7	FED7/80-BD	ISW50-250A(I)	YE3-160M1	2950	11	F188F	3600	7.3	9.9
	8	FED8/80-BD	ISW50-250(I)	YE3-160M2	2950	15	F188F	3600	7.3	9.9
100	3	FED3/100-BD	ISW50-160(I)	YE3-112M	2950	4	F186FA	3600	6.3	8.6
	4	FED4/100-BD	ISW50-200A(I)	YE3-132S1	2950	5.5	F186FA	3600	6.3	8.6
	5	FED5/100-BD	ISW50-200(I)	YE3-132S2	2950	7.5	F188F	3600	7.3	9.9
	6	FED6/100-BD	ISW50-250B(I)	YE3-132S2	2950	7.5	F188F	3600	7.3	9.9
	7	FED7/100-BD	ISW50-250A(I)	YE3-160M1	2950	11	F188F	3600	7.3	9.9
	8	FED8/100-BD	ISW50-250(I)	YE3-160M2	2950	15	192F	3600	8.1	11.0

HEAVY DUTY

FIRE FIGHTING EQUIPMENT



ADVANTAGES

Fire Pump Packages comprises a combination of electric motor driven pump, diesel engine driven pump and electric motor driven jockey pumps that supply for fire suppression systems.

Fire Pump Packages is required to comply with Local Civil Defense Authority regulations and International Codes of Practice e.g. National Fire Protection Association (NFPA).

Provides a swift response to fire emergencies, effectively suppressing fires and minimizing damage to property and risk to life. Its presence ensures preparedness, compliance with regulations, and peace of mind for occupants and property owners.



**Rapid
Response**

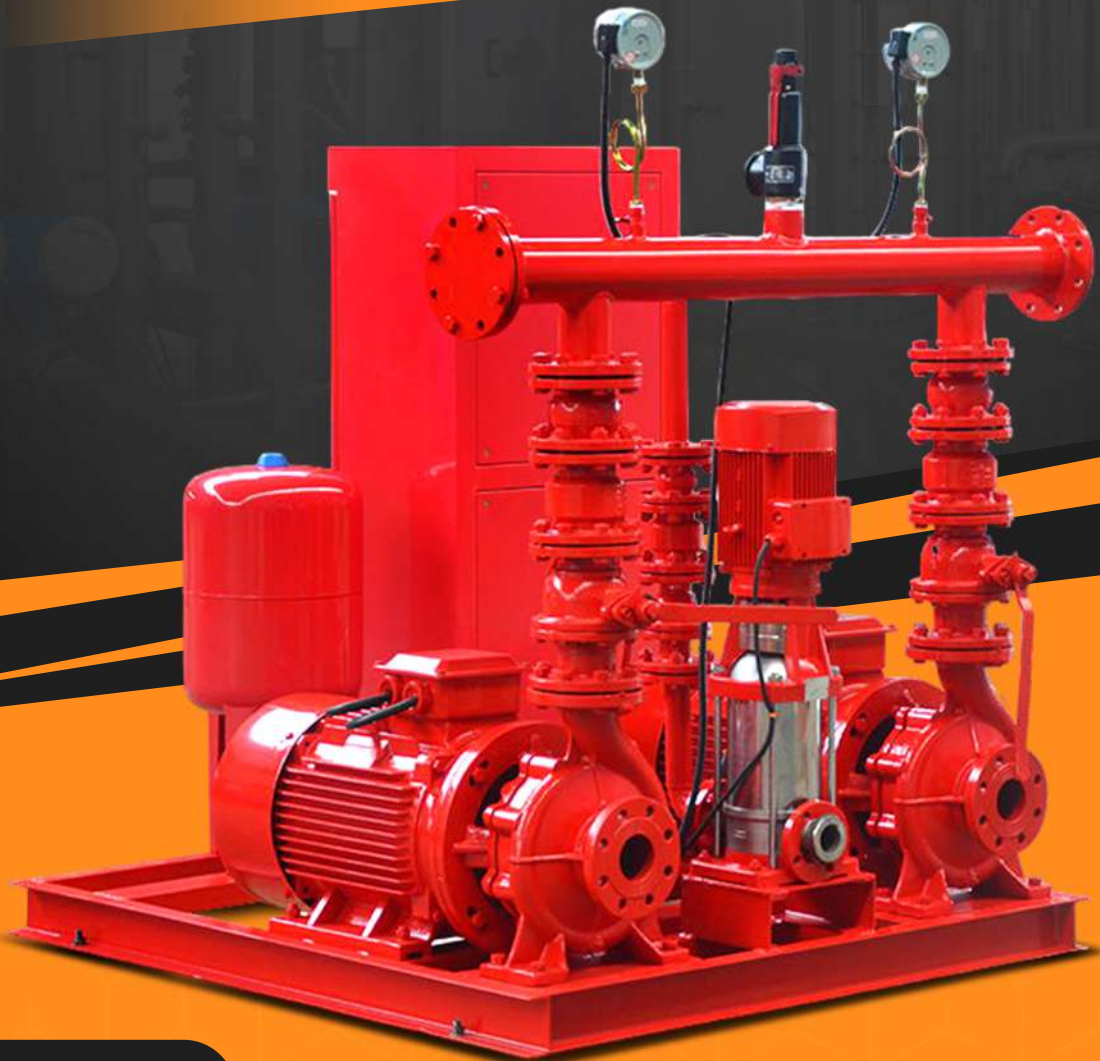


**Early
Detection**



**Fire
Suppression**

HEAVY DUTY
FIRE FIGHTING
 EQUIPMENT



ADVANTAGES

Fire Pump Packages comprises a combination of electric motor driven pump, diesel engine driven pump and electric motor driven jockey pumps that supply for fire suppression systems.

Fire Pump Packages is required to comply with Local Civil Defense Authority regulations and International Codes of Practice e.g. National Fire Protection Association (NFPA).

Provides a swift response to fire emergencies, effectively suppressing fires and minimizing damage to property and risk to life. Its presence ensures preparedness, compliance with regulations, and peace of mind for occupants and property owners.



Rapid Response



Early Detection



Fire Suppression

HEAVY DUTY

FIRE FIGHTING EQUIPMENT



ADVANTAGES

Fire Pump Packages comprises a combination of electric motor driven pump, diesel engine driven pump and electric motor driven jockey pumps that supply for fire suppression systems.

Fire Pump Packages is required to comply with Local Civil Defense Authority regulations and International Codes of Practice e.g. National Fire Protection Association (NFPA).

Provides a swift response to fire emergencies, effectively suppressing fires and minimizing damage to property and risk to life. Its presence ensures preparedness, compliance with regulations, and peace of mind for occupants and property owners.



**Rapid
Response**



**Early
Detection**



**Fire
Suppression**

SPECIFICATIONS

100GPM @4BAR					
Pump	Model	Capacity (GPM)	Head (BAR)	Power (KW)	Material
Electric	FXBD4/5-50L(50-200)	100	4	5.5	Cast Iron
Diesel Engine	XBC4/5-IS	100	4	5.5	Cast Iron
Jockey	CDL2-70	10	5	0.75	SS304
100GPM @6BAR					
Pump	Model	Capacity (GPM)	Head (BAR)	Power (KW)	Material
Electric	FXBD6/5-65L(65-250B)	100	6	7.5	Cast Iron
Diesel Engine	XBC6/5-IS	100	6	7.5	Cast Iron
Jockey	CDL2-100	10	7	1.1	SS304
200GPM @6BAR					
Pump	Model	Capacity (GPM)	Head (BAR)	Power (KW)	Material
Electric	FXBD6/10-65L(65-250)	200	6	15	Cast Iron
Diesel Engine	XBC4/5-IS	200	6	22	Cast Iron
Jockey	CDL4-90	20	7	2.2	SS304
500GPM @5BAR					
Pump	Model	Capacity (GPM)	Head (BAR)	Power (KW)	Material
Electric	FXBD5/30-100L(100-200)	500	5	22	Cast Iron
Diesel Engine	XBC5/30-IS	500	5	30	Cast Iron
Jockey	CDL12-60	50	6	4	SS304
500GPM @8BAR					
Pump	Model	Capacity (GPM)	Head (BAR)	Power (KW)	Material
Electric	FXBD8/30-100L(100-250)	500	8	37	Cast Iron
Diesel Engine	XBC8/30-D	500	8	45	Cast Iron
Jockey	CDL12-90	50	9	5.5	SS304
500GPM @10BAR					
Pump	Model	Capacity (GPM)	Head (BAR)	Power (KW)	Material
Electric	FXBD10/30-100L(100-315A)	500	10	55	Cast Iron
Diesel Engine	XBC10/30-D	500	10	55	Cast Iron
Jockey	CDL12-110	50	11	7.5	SS304
750GPM @9BAR					
Pump	Model	Capacity (GPM)	Head (BAR)	Power (KW)	Material
Electric	FXBD9/50-125L(125-250)	750	9	55	Cast Iron
Diesel Engine	XBC9/50-D	750	9	90	Cast Iron
Jockey	CDL16-90	70	10	11	SS304
750GPM @10BAR					
Pump	Model	Capacity (GPM)	Head (BAR)	Power (KW)	Material
Electric	FXBD10/50-150L(150-315A)	750	10	90	Cast Iron
Diesel Engine	XBC10/50-D	750	10	90	Cast Iron
Jockey	CDL16-100	70	11	11	SS304

HEAVY DUTY

FIRE FIGHTING EQUIPMENT



ADVANTAGES

Fire Pump Packages comprises a combination of electric motor driven pump, diesel engine driven pump and electric motor driven jockey pumps that supply for fire suppression systems.

Fire Pump Packages is required to comply with Local Civil Defense Authority regulations and International Codes of Practice e.g. National Fire Protection Association (NFPA).

Provides a swift response to fire emergencies, effectively suppressing fires and minimizing damage to property and risk to life. Its presence ensures preparedness, compliance with regulations, and peace of mind for occupants and property owners.



**Rapid
Response**



**Early
Detection**



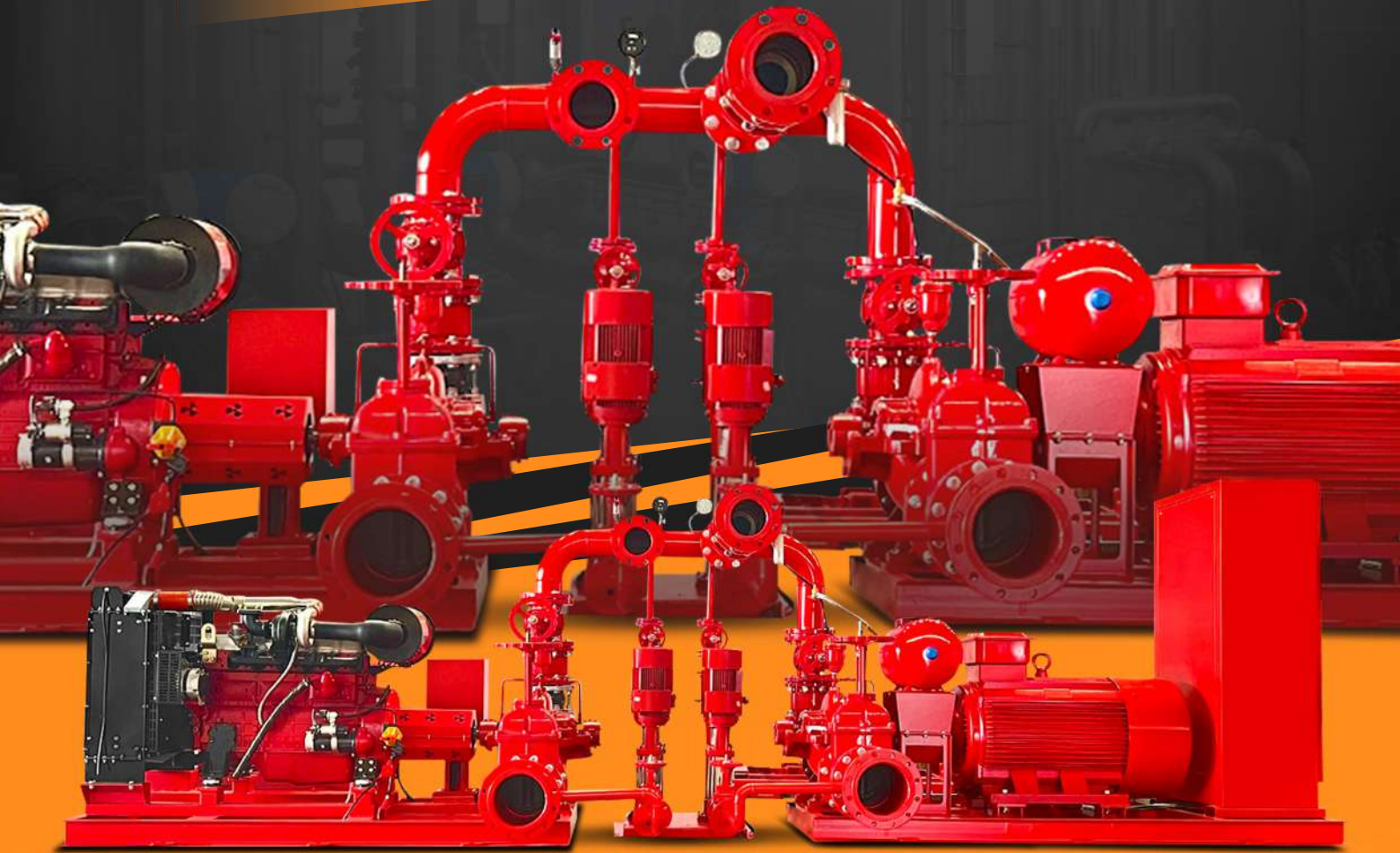
**Fire
Suppression**

SPECIFICATIONS

100GPM @4BAR					
Pump	Model	Capacity (GPM)	Head (BAR)	Power (KW)	Material
Electric	FXBD4/5-50L(50-200)	100	4	5.5	Cast Iron
Diesel Engine	XBC4/5-IS	100	4	5.5	Cast Iron
Jockey	CDL2-70	10	5	0.75	SS304
100GPM @6BAR					
Pump	Model	Capacity (GPM)	Head (BAR)	Power (KW)	Material
Electric	FXBD6/5-65L(65-250B)	100	6	7.5	Cast Iron
Diesel Engine	XBC6/5-IS	100	6	7.5	Cast Iron
Jockey	CDL2-100	10	7	1.1	SS304
200GPM @6BAR					
Pump	Model	Capacity (GPM)	Head (BAR)	Power (KW)	Material
Electric	FXBD6/10-65L(65-250)	200	6	15	Cast Iron
Diesel Engine	XBC4/5-IS	200	6	22	Cast Iron
Jockey	CDL4-90	20	7	2.2	SS304
500GPM @5BAR					
Pump	Model	Capacity (GPM)	Head (BAR)	Power (KW)	Material
Electric	FXBD5/30-100L(100-200)	500	5	22	Cast Iron
Diesel Engine	XBC5/30-IS	500	5	30	Cast Iron
Jockey	CDL12-60	50	6	4	SS304
500GPM @8BAR					
Pump	Model	Capacity (GPM)	Head (BAR)	Power (KW)	Material
Electric	FXBD8/30-100L(100-250)	500	8	37	Cast Iron
Diesel Engine	XBC8/30-D	500	8	45	Cast Iron
Jockey	CDL12-90	50	9	5.5	SS304
500GPM @10BAR					
Pump	Model	Capacity (GPM)	Head (BAR)	Power (KW)	Material
Electric	FXBD10/30-100L(100-315A)	500	10	55	Cast Iron
Diesel Engine	XBC10/30-D	500	10	55	Cast Iron
Jockey	CDL12-110	50	11	7.5	SS304
750GPM @9BAR					
Pump	Model	Capacity (GPM)	Head (BAR)	Power (KW)	Material
Electric	FXBD9/50-125L(125-250)	750	9	55	Cast Iron
Diesel Engine	XBC9/50-D	750	9	90	Cast Iron
Jockey	CDL16-90	70	10	11	SS304
750GPM @10BAR					
Pump	Model	Capacity (GPM)	Head (BAR)	Power (KW)	Material
Electric	FXBD10/50-150L(150-315A)	750	10	90	Cast Iron
Diesel Engine	XBC10/50-D	750	10	90	Cast Iron
Jockey	CDL16-100	70	11	11	SS304

HEAVY DUTY

FIRE FIGHTING EQUIPMENT



ADVANTAGES

Fire Pump Packages comprises a combination of electric motor driven pump, diesel engine driven pump and electric motor driven jockey pumps that supply for fire suppression systems.

Fire Pump Packages is required to comply with Local Civil Defense Authority regulations and International Codes of Practice e.g. National Fire Protection Association (NFPA).

Provides a swift response to fire emergencies, effectively suppressing fires and minimizing damage to property and risk to life. Its presence ensures preparedness, compliance with regulations, and peace of mind for occupants and property owners.



**Rapid
Response**



**Early
Detection**



**Fire
Suppression**

HEAVY DUTY

FIRE FIGHTING EQUIPMENT



ADVANTAGES

Fire Pump Packages comprises a combination of electric motor driven pump, diesel engine driven pump and electric motor driven jockey pumps that supply for fire suppression systems.

Fire Pump Packages is required to comply with Local Civil Defense Authority regulations and International Codes of Practice e.g. National Fire Protection Association (NFPA).

Provides a swift response to fire emergencies, effectively suppressing fires and minimizing damage to property and risk to life. Its presence ensures preparedness, compliance with regulations, and peace of mind for occupants and property owners.



**Rapid
Response**



**Early
Detection**



**Fire
Suppression**

HEAVY DUTY

FIRE FIGHTING

EQUIPMENT



ADVANTAGES

Fire Pump Packages comprises a combination of electric motor driven pump, diesel engine driven pump and electric motor driven jockey pumps that supply for fire suppression systems.

Fire Pump Packages is required to comply with Local Civil Defense Authority regulations and International Codes of Practice e.g. National Fire Protection Association (NFPA).

Provides a swift response to fire emergencies, effectively suppressing fires and minimizing damage to property and risk to life. Its presence ensures preparedness, compliance with regulations, and peace of mind for occupants and property owners.



**Rapid
Response**



**Early
Detection**

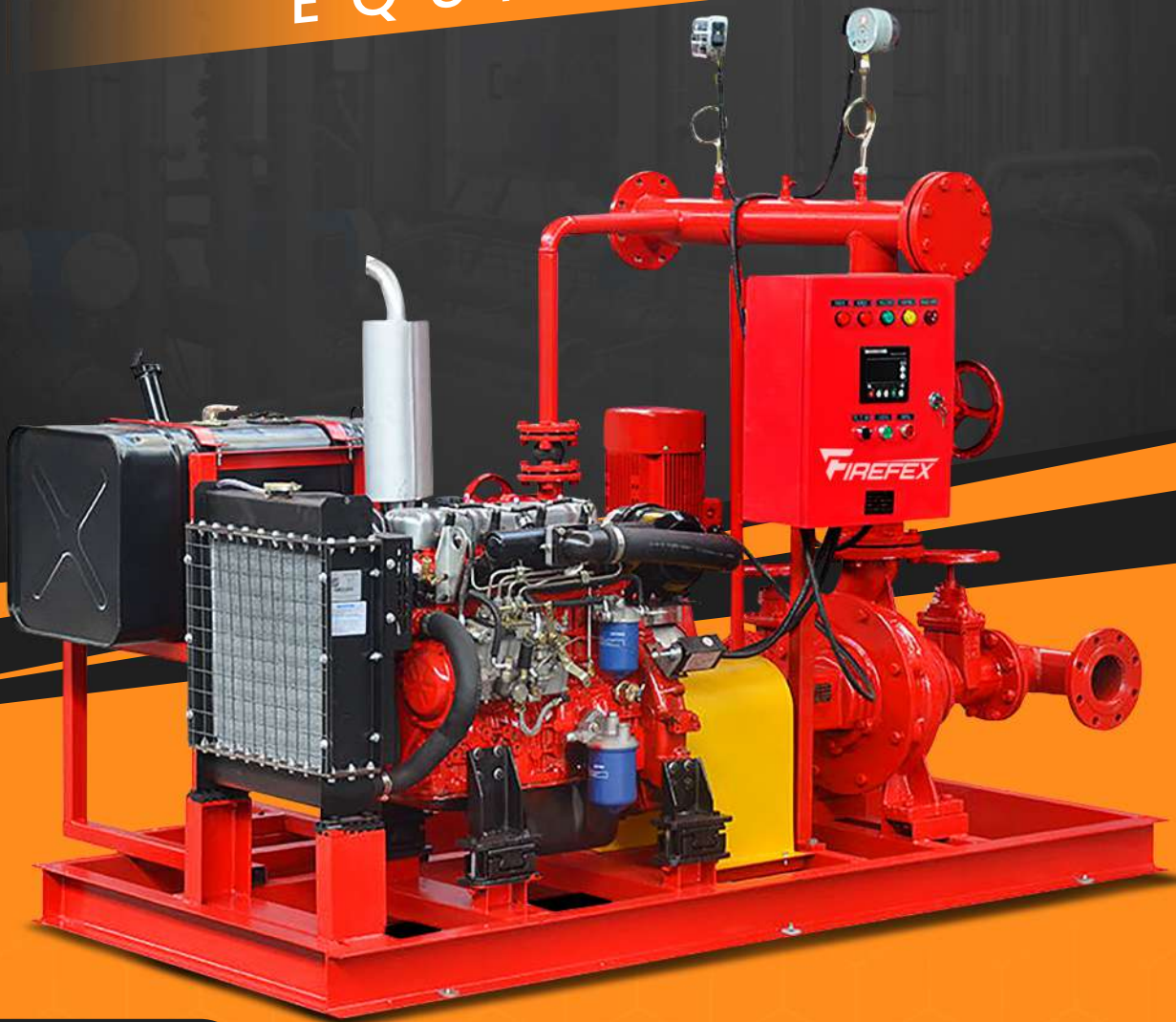


**Fire
Suppression**

SPECIFICATIONS

100GPM @4BAR					
Pump	Model	Capacity (GPM)	Head (BAR)	Power (KW)	Material
Electric	FXBD4/5-50L(50-200)	100	4	5.5	Cast Iron
Diesel Engine	XBC4/5-IS	100	4	5.5	Cast Iron
Jockey	CDL2-70	10	5	0.75	SS304
100GPM @6BAR					
Pump	Model	Capacity (GPM)	Head (BAR)	Power (KW)	Material
Electric	FXBD6/5-65L(65-250B)	100	6	7.5	Cast Iron
Diesel Engine	XBC6/5-IS	100	6	7.5	Cast Iron
Jockey	CDL2-100	10	7	1.1	SS304
200GPM @6BAR					
Pump	Model	Capacity (GPM)	Head (BAR)	Power (KW)	Material
Electric	FXBD6/10-65L(65-250)	200	6	15	Cast Iron
Diesel Engine	XBC4/5-IS	200	6	22	Cast Iron
Jockey	CDL4-90	20	7	2.2	SS304
500GPM @5BAR					
Pump	Model	Capacity (GPM)	Head (BAR)	Power (KW)	Material
Electric	FXBD5/30-100L(100-200)	500	5	22	Cast Iron
Diesel Engine	XBC5/30-IS	500	5	30	Cast Iron
Jockey	CDL12-60	50	6	4	SS304
500GPM @8BAR					
Pump	Model	Capacity (GPM)	Head (BAR)	Power (KW)	Material
Electric	FXBD8/30-100L(100-250)	500	8	37	Cast Iron
Diesel Engine	XBC8/30-D	500	8	45	Cast Iron
Jockey	CDL12-90	50	9	5.5	SS304
500GPM @10BAR					
Pump	Model	Capacity (GPM)	Head (BAR)	Power (KW)	Material
Electric	FXBD10/30-100L(100-315A)	500	10	55	Cast Iron
Diesel Engine	XBC10/30-D	500	10	55	Cast Iron
Jockey	CDL12-110	50	11	7.5	SS304
750GPM @9BAR					
Pump	Model	Capacity (GPM)	Head (BAR)	Power (KW)	Material
Electric	FXBD9/50-125L(125-250)	750	9	55	Cast Iron
Diesel Engine	XBC9/50-D	750	9	90	Cast Iron
Jockey	CDL16-90	70	10	11	SS304
750GPM @10BAR					
Pump	Model	Capacity (GPM)	Head (BAR)	Power (KW)	Material
Electric	FXBD10/50-150L(150-315A)	750	10	90	Cast Iron
Diesel Engine	XBC10/50-D	750	10	90	Cast Iron
Jockey	CDL16-100	70	11	11	SS304

HEAVY DUTY
FIRE FIGHTING
EQUIPMENT



ADVANTAGES

Fire Pump Packages comprises a combination of electric motor driven pump, diesel engine driven pump and electric motor driven jockey pumps that supply for fire suppression systems.

Fire Pump Packages is required to comply with Local Civil Defense Authority regulations and International Codes of Practice e.g. National Fire Protection Association (NFPA).

Provides a swift response to fire emergencies, effectively suppressing fires and minimizing damage to property and risk to life. Its presence ensures preparedness, compliance with regulations, and peace of mind for occupants and property owners.



Rapid Response



Early Detection



Fire Suppression

HEAVY DUTY
FIRE FIGHTING
 EQUIPMENT



ADVANTAGES

Fire Pump Packages comprises a combination of electric motor driven pump, diesel engine driven pump and electric motor driven jockey pumps that supply for fire suppression systems.

Fire Pump Packages is required to comply with Local Civil Defense Authority regulations and International Codes of Practice e.g. National Fire Protection Association (NFPA).

Provides a swift response to fire emergencies, effectively suppressing fires and minimizing damage to property and risk to life. Its presence ensures preparedness, compliance with regulations, and peace of mind for occupants and property owners.



Rapid Response



Early Detection



Fire Suppression

SPECIFICATIONS

100GPM @4BAR					
Pump	Model	Capacity (GPM)	Head (BAR)	Power (KW)	Material
Electric	FXBD4/5-50L(50-200)	100	4	5.5	Cast Iron
Diesel Engine	XBC4/5-IS	100	4	5.5	Cast Iron
Jockey	CDL2-70	10	5	0.75	SS304
100GPM @6BAR					
Pump	Model	Capacity (GPM)	Head (BAR)	Power (KW)	Material
Electric	FXBD6/5-65L(65-250B)	100	6	7.5	Cast Iron
Diesel Engine	XBC6/5-IS	100	6	7.5	Cast Iron
Jockey	CDL2-100	10	7	1.1	SS304
200GPM @6BAR					
Pump	Model	Capacity (GPM)	Head (BAR)	Power (KW)	Material
Electric	FXBD6/10-65L(65-250)	200	6	15	Cast Iron
Diesel Engine	XBC4/5-IS	200	6	22	Cast Iron
Jockey	CDL4-90	20	7	2.2	SS304
500GPM @5BAR					
Pump	Model	Capacity (GPM)	Head (BAR)	Power (KW)	Material
Electric	FXBD5/30-100L(100-200)	500	5	22	Cast Iron
Diesel Engine	XBC5/30-IS	500	5	30	Cast Iron
Jockey	CDL12-60	50	6	4	SS304
500GPM @8BAR					
Pump	Model	Capacity (GPM)	Head (BAR)	Power (KW)	Material
Electric	FXBD8/30-100L(100-250)	500	8	37	Cast Iron
Diesel Engine	XBC8/30-D	500	8	45	Cast Iron
Jockey	CDL12-90	50	9	5.5	SS304
500GPM @10BAR					
Pump	Model	Capacity (GPM)	Head (BAR)	Power (KW)	Material
Electric	FXBD10/30-100L(100-315A)	500	10	55	Cast Iron
Diesel Engine	XBC10/30-D	500	10	55	Cast Iron
Jockey	CDL12-110	50	11	7.5	SS304
750GPM @9BAR					
Pump	Model	Capacity (GPM)	Head (BAR)	Power (KW)	Material
Electric	FXBD9/50-125L(125-250)	750	9	55	Cast Iron
Diesel Engine	XBC9/50-D	750	9	90	Cast Iron
Jockey	CDL16-90	70	10	11	SS304
750GPM @10BAR					
Pump	Model	Capacity (GPM)	Head (BAR)	Power (KW)	Material
Electric	FXBD10/50-150L(150-315A)	750	10	90	Cast Iron
Diesel Engine	XBC10/50-D	750	10	90	Cast Iron
Jockey	CDL16-100	70	11	11	SS304

HEAVY DUTY

FIRE FIGHTING EQUIPMENT



ADVANTAGES

Fire Pump Packages comprises a combination of electric motor driven pump, diesel engine driven pump and electric motor driven jockey pumps that supply for fire suppression systems.

Fire Pump Packages is required to comply with Local Civil Defense Authority regulations and International Codes of Practice e.g. National Fire Protection Association (NFPA).

Provides a swift response to fire emergencies, effectively suppressing fires and minimizing damage to property and risk to life. Its presence ensures preparedness, compliance with regulations, and peace of mind for occupants and property owners.



**Rapid
Response**



**Early
Detection**



**Fire
Suppression**

SPECIFICATIONS

100GPM @4BAR					
Pump	Model	Capacity (GPM)	Head (BAR)	Power (KW)	Material
Electric	FXBD4/5-50L(50-200)	100	4	5.5	Cast Iron
Diesel Engine	XBC4/5-IS	100	4	5.5	Cast Iron
Jockey	CDL2-70	10	5	0.75	SS304
100GPM @6BAR					
Pump	Model	Capacity (GPM)	Head (BAR)	Power (KW)	Material
Electric	FXBD6/5-65L(65-250B)	100	6	7.5	Cast Iron
Diesel Engine	XBC6/5-IS	100	6	7.5	Cast Iron
Jockey	CDL2-100	10	7	1.1	SS304
200GPM @6BAR					
Pump	Model	Capacity (GPM)	Head (BAR)	Power (KW)	Material
Electric	FXBD6/10-65L(65-250)	200	6	15	Cast Iron
Diesel Engine	XBC4/5-IS	200	6	22	Cast Iron
Jockey	CDL4-90	20	7	2.2	SS304
500GPM @5BAR					
Pump	Model	Capacity (GPM)	Head (BAR)	Power (KW)	Material
Electric	FXBD5/30-100L(100-200)	500	5	22	Cast Iron
Diesel Engine	XBC5/30-IS	500	5	30	Cast Iron
Jockey	CDL12-60	50	6	4	SS304
500GPM @8BAR					
Pump	Model	Capacity (GPM)	Head (BAR)	Power (KW)	Material
Electric	FXBD8/30-100L(100-250)	500	8	37	Cast Iron
Diesel Engine	XBC8/30-D	500	8	45	Cast Iron
Jockey	CDL12-90	50	9	5.5	SS304
500GPM @10BAR					
Pump	Model	Capacity (GPM)	Head (BAR)	Power (KW)	Material
Electric	FXBD10/30-100L(100-315A)	500	10	55	Cast Iron
Diesel Engine	XBC10/30-D	500	10	55	Cast Iron
Jockey	CDL12-110	50	11	7.5	SS304
750GPM @9BAR					
Pump	Model	Capacity (GPM)	Head (BAR)	Power (KW)	Material
Electric	FXBD9/50-125L(125-250)	750	9	55	Cast Iron
Diesel Engine	XBC9/50-D	750	9	90	Cast Iron
Jockey	CDL16-90	70	10	11	SS304
750GPM @10BAR					
Pump	Model	Capacity (GPM)	Head (BAR)	Power (KW)	Material
Electric	FXBD10/50-150L(150-315A)	750	10	90	Cast Iron
Diesel Engine	XBC10/50-D	750	10	90	Cast Iron
Jockey	CDL16-100	70	11	11	SS304

HEAVY DUTY

FIRE FIGHTING

EQUIPMENT



ADVANTAGES

Fire Pump Packages comprises a combination of electric motor driven pump, diesel engine driven pump and electric motor driven jockey pumps that supply for fire suppression systems.

Fire Pump Packages is required to comply with Local Civil Defense Authority regulations and International Codes of Practice e.g. National Fire Protection Association (NFPA).

Provides a swift response to fire emergencies, effectively suppressing fires and minimizing damage to property and risk to life. Its presence ensures preparedness, compliance with regulations, and peace of mind for occupants and property owners.



**Rapid
Response**



**Early
Detection**



**Fire
Suppression**

SPECIFICATIONS

100GPM @4BAR					
Pump	Model	Capacity (GPM)	Head (BAR)	Power (KW)	Material
Electric	FXBD4/5-50L(50-200)	100	4	5.5	Cast Iron
Diesel Engine	XBC4/5-IS	100	4	5.5	Cast Iron
Jockey	CDL2-70	10	5	0.75	SS304
100GPM @6BAR					
Pump	Model	Capacity (GPM)	Head (BAR)	Power (KW)	Material
Electric	FXBD6/5-65L(65-250B)	100	6	7.5	Cast Iron
Diesel Engine	XBC6/5-IS	100	6	7.5	Cast Iron
Jockey	CDL2-100	10	7	1.1	SS304
200GPM @6BAR					
Pump	Model	Capacity (GPM)	Head (BAR)	Power (KW)	Material
Electric	FXBD6/10-65L(65-250)	200	6	15	Cast Iron
Diesel Engine	XBC4/5-IS	200	6	22	Cast Iron
Jockey	CDL4-90	20	7	2.2	SS304
500GPM @5BAR					
Pump	Model	Capacity (GPM)	Head (BAR)	Power (KW)	Material
Electric	FXBD5/30-100L(100-200)	500	5	22	Cast Iron
Diesel Engine	XBC5/30-IS	500	5	30	Cast Iron
Jockey	CDL12-60	50	6	4	SS304
500GPM @8BAR					
Pump	Model	Capacity (GPM)	Head (BAR)	Power (KW)	Material
Electric	FXBD8/30-100L(100-250)	500	8	37	Cast Iron
Diesel Engine	XBC8/30-D	500	8	45	Cast Iron
Jockey	CDL12-90	50	9	5.5	SS304
500GPM @10BAR					
Pump	Model	Capacity (GPM)	Head (BAR)	Power (KW)	Material
Electric	FXBD10/30-100L(100-315A)	500	10	55	Cast Iron
Diesel Engine	XBC10/30-D	500	10	55	Cast Iron
Jockey	CDL12-110	50	11	7.5	SS304
750GPM @9BAR					
Pump	Model	Capacity (GPM)	Head (BAR)	Power (KW)	Material
Electric	FXBD9/50-125L(125-250)	750	9	55	Cast Iron
Diesel Engine	XBC9/50-D	750	9	90	Cast Iron
Jockey	CDL16-90	70	10	11	SS304
750GPM @10BAR					
Pump	Model	Capacity (GPM)	Head (BAR)	Power (KW)	Material
Electric	FXBD10/50-150L(150-315A)	750	10	90	Cast Iron
Diesel Engine	XBC10/50-D	750	10	90	Cast Iron
Jockey	CDL16-100	70	11	11	SS304

HEAVY DUTY

FIRE FIGHTING EQUIPMENT



ADVANTAGES

Fire Pump Packages comprises a combination of electric motor driven pump, diesel engine driven pump and electric motor driven jockey pumps that supply for fire suppression systems.

Fire Pump Packages is required to comply with Local Civil Defense Authority regulations and International Codes of Practice e.g. National Fire Protection Association (NFPA).

Provides a swift response to fire emergencies, effectively suppressing fires and minimizing damage to property and risk to life. Its presence ensures preparedness, compliance with regulations, and peace of mind for occupants and property owners.



**Rapid
Response**



**Early
Detection**



**Fire
Suppression**

SPECIFICATIONS

Model	Fire Pump				Jockey Pump		
	Flow		Head	Pressure	Model	Head	Power
	M3/h	GPM	BAR	Pis		BAR	KW
FEJ25/3	5.6	25	3	44	CDL2-5	3.7	0.55
FEJ25/4	5.6	25	4	58	CDL2-6	4.5	0.75
FEJ25/5	5.6	25	5	73	CDL2-7	5.2	0.75
FEJ25/6	5.6	25	6	87	CDL2-9	6.7	1.1
FEJ25/7	5.6	25	7	102	CDL2-10	7.5	1.1
FEJ25/8	5.6	25	8	116	CDL2-12	9	1.5
FEJ25/9	5.6	25	9	131	CDL2-13	9.7	1.5
FEJ25/10	5.6	25	10	145	CDL2-14	10.5	1.5
FEJ25/11	5.6	25	11	160	CDL2-15	11.2	1.5
FEJ25/12	5.6	25	12	174	CDL2-17	12.7	2.2
FEJ30/3	6.9	30	3	44	CDL2-5	3.7	0.55
FEJ30/4	6.9	30	4	58	CDL2-6	4.5	0.75
FEJ30/5	6.9	30	5	73	CDL2-7	5.2	0.75
FEJ30/6	6.9	30	6	87	CDL2-9	6.7	1.1
FEJ30/7	6.9	30	7	102	CDL2-10	7.5	1.1
FEJ30/8	6.9	30	8	116	CDL2-12	9	1.5
FEJ30/9	6.9	30	9	131	CDL2-13	9.7	1.5
FEJ30/10	6.9	30	10	145	CDL2-14	10.5	1.5
FEJ30/11	6.9	30	11	160	CDL2-15	11.2	1.5
FEJ30/12	6.9	30	12	174	CDL2-17	12.7	2.2
FEJ100/10	22.7	100	10	145	CDL2-14	10.5	1.5
FEJ100/11	22.7	100	11	160	CDL2-15	11.2	1.5
FEJ100/12	22.7	100	12	174	CDL2-17	12.7	2.2

HEAVY DUTY

FIRE FIGHTING EQUIPMENT



ADVANTAGES

Fire Pump Packages comprises a combination of electric motor driven pump, diesel engine driven pump and electric motor driven jockey pumps that supply for fire suppression systems.

Fire Pump Packages is required to comply with Local Civil Defense Authority regulations and International Codes of Practice e.g. National Fire Protection Association (NFPA).

Provides a swift response to fire emergencies, effectively suppressing fires and minimizing damage to property and risk to life. Its presence ensures preparedness, compliance with regulations, and peace of mind for occupants and property owners.



**Rapid
Response**



**Early
Detection**



**Fire
Suppression**

SPECIFICATIONS

Model	Pump				Diesel Engine			Jockey Pump		
	Flow		Head	Pressure	Model	Power	Diesel Engine	Model	Head	Power
	M3/h	GPM	Bar	Pis		KW			Bar	KW
FDJ25/3	5.6	25	3	44	BTI40/40-171	4	173F	CDL2-5	3.7	0.55
FDJ25/4	5.6	25	4	58	BTI40/40-171	4	173F	CDL2-6	4.5	0.75
FDJ25/5	5.6	25	5	73	BTI40/40-171	4	173F	CDL2-7	5.2	0.75
FDJ25/6	5.6	25	6	87	BTI40/40-171	4	173F	CDL2-9	6.7	1.1
FDJ25/7	5.6	25	7	102	BTI50/50-198	6.7	186F	CDL2-10	7.5	1.1
FDJ25/8	5.6	25	8	116	BTI50/50-198	6.7	186F	CDL2-12	9	1.5
FDJ25/9	5.6	25	9	131	1.5GCx3	8.6	192F	CDL2-13	9.7	1.5
FDJ25/10	5.6	25	10	145	1.5GCx4	9.2	195F	CDL2-14	10.5	1.5
FDJ25/11	5.6	25	11	160	1.5GCx4	9.2	195F	CDL2-15	11.2	1.5
FDJ25/12	5.6	25	12	174	1.5GCx5	10.2	1100F	CDL2-17	12.7	2.2
FDJ30/3	6.9	30	3	44	BTI40/40-171	4	173F	CDL2-5	3.7	0.55
FDJ30/4	6.9	30	4	58	BTI40/40-171	4	173F	CDL2-6	4.5	0.75
FDJ30/5	6.9	30	5	73	BTI40/40-171	4	173F	CDL2-7	5.2	0.75
FDJ30/6	6.9	30	6	87	BTI40/40-171	4	173F	CDL2-9	6.7	1.1
FDJ30/7	6.9	30	7	102	BTI50/50-198	6.7	186F	CDL2-10	7.5	1.1
FDJ30/8	6.9	30	8	116	BTI50/50-198	6.7	186F	CDL2-12	9	1.5
FDJ30/9	6.9	30	9	131	1.5GCx3	8.6	192F	CDL2-13	9.7	1.5
FDJ30/10	6.9	30	10	145	1.5GCx4	9.2	195F	CDL2-14	10.5	1.5
FDJ30/11	6.9	30	11	160	1.5GCx4	9.2	195F	CDL2-15	11.2	1.5
FDJ30/12	6.9	30	12	174	1.5GCx5	10.2	1100F	CDL2-17	12.7	2.2
FDJ100/10	22.7	100	10	145	D25-30x4	20	295F	CDL2-14	10.5	1.5
FDJ100/11	22.7	100	11	160	D25-30x4	20	295F	CDL2-15	11.2	1.5
FDJ100/12	22.7	100	12	174	D25-30x4	20	295F	CDL2-17	12.7	2.2

HEAVY DUTY
FIRE FIGHTING
 EQUIPMENT



ADVANTAGES

Fire Pump Packages comprises a combination of electric motor driven pump, diesel engine driven pump and electric motor driven jockey pumps that supply for fire suppression systems.

Fire Pump Packages is required to comply with Local Civil Defense Authority regulations and International Codes of Practice e.g. National Fire Protection Association (NFPA).

Provides a swift response to fire emergencies, effectively suppressing fires and minimizing damage to property and risk to life. Its presence ensures preparedness, compliance with regulations, and peace of mind for occupants and property owners.



Rapid Response



Early Detection



Fire Suppression

SPECIFICATIONS

Model	Fire Pump				Jockey Pump		
	Flow		Head	Pressure	Model	Head	Power
	M3/h	GPM	BAR	Pis		BAR	KW
FEJ25/3	5.6	25	3	44	CDL2-5	3.7	0.55
FEJ25/4	5.6	25	4	58	CDL2-6	4.5	0.75
FEJ25/5	5.6	25	5	73	CDL2-7	5.2	0.75
FEJ25/6	5.6	25	6	87	CDL2-9	6.7	1.1
FEJ25/7	5.6	25	7	102	CDL2-10	7.5	1.1
FEJ25/8	5.6	25	8	116	CDL2-12	9	1.5
FEJ25/9	5.6	25	9	131	CDL2-13	9.7	1.5
FEJ25/10	5.6	25	10	145	CDL2-14	10.5	1.5
FEJ25/11	5.6	25	11	160	CDL2-15	11.2	1.5
FEJ25/12	5.6	25	12	174	CDL2-17	12.7	2.2
FEJ30/3	6.9	30	3	44	CDL2-5	3.7	0.55
FEJ30/4	6.9	30	4	58	CDL2-6	4.5	0.75
FEJ30/5	6.9	30	5	73	CDL2-7	5.2	0.75
FEJ30/6	6.9	30	6	87	CDL2-9	6.7	1.1
FEJ30/7	6.9	30	7	102	CDL2-10	7.5	1.1
FEJ30/8	6.9	30	8	116	CDL2-12	9	1.5
FEJ30/9	6.9	30	9	131	CDL2-13	9.7	1.5
FEJ30/10	6.9	30	10	145	CDL2-14	10.5	1.5
FEJ30/11	6.9	30	11	160	CDL2-15	11.2	1.5
FEJ30/12	6.9	30	12	174	CDL2-17	12.7	2.2
FEJ100/10	22.7	100	10	145	CDL2-14	10.5	1.5
FEJ100/11	22.7	100	11	160	CDL2-15	11.2	1.5
FEJ100/12	22.7	100	12	174	CDL2-17	12.7	2.2

HEAVY DUTY
FIRE FIGHTING
EQUIPMENT



ADVANTAGES

Fire Pump Packages comprises a combination of electric motor driven pump, diesel engine driven pump and electric motor driven jockey pumps that supply for fire suppression systems.

Fire Pump Packages is required to comply with Local Civil Defense Authority regulations and International Codes of Practice e.g. National Fire Protection Association (NFPA).

Provides a swift response to fire emergencies, effectively suppressing fires and minimizing damage to property and risk to life. Its presence ensures preparedness, compliance with regulations, and peace of mind for occupants and property owners.



Rapid Response



Early Detection



Fire Suppression

HEAVY DUTY

FIRE FIGHTING EQUIPMENT



ADVANTAGES

Fire Pump Packages comprises a combination of electric motor driven pump, diesel engine driven pump and electric motor driven jockey pumps that supply for fire suppression systems.

Fire Pump Packages is required to comply with Local Civil Defense Authority regulations and International Codes of Practice e.g. National Fire Protection Association (NFPA).

Provides a swift response to fire emergencies, effectively suppressing fires and minimizing damage to property and risk to life. Its presence ensures preparedness, compliance with regulations, and peace of mind for occupants and property owners.



**Rapid
Response**



**Early
Detection**



**Fire
Suppression**

SPECIFICATIONS

Model	Pump				Diesel Engine			Jockey Pump		
	Flow		Head	Pressure	Model	Power	Diesel Engine	Model	Head	Power
	M3/h	GPM	Bar	Pis		KW			Bar	KW
FDJ25/3	5.6	25	3	44	BTI40/40-171	4	173F	CDL2-5	3.7	0.55
FDJ25/4	5.6	25	4	58	BTI40/40-171	4	173F	CDL2-6	4.5	0.75
FDJ25/5	5.6	25	5	73	BTI40/40-171	4	173F	CDL2-7	5.2	0.75
FDJ25/6	5.6	25	6	87	BTI40/40-171	4	173F	CDL2-9	6.7	1.1
FDJ25/7	5.6	25	7	102	BTI50/50-198	6.7	186F	CDL2-10	7.5	1.1
FDJ25/8	5.6	25	8	116	BTI50/50-198	6.7	186F	CDL2-12	9	1.5
FDJ25/9	5.6	25	9	131	1.5GCx3	8.6	192F	CDL2-13	9.7	1.5
FDJ25/10	5.6	25	10	145	1.5GCx4	9.2	195F	CDL2-14	10.5	1.5
FDJ25/11	5.6	25	11	160	1.5GCx4	9.2	195F	CDL2-15	11.2	1.5
FDJ25/12	5.6	25	12	174	1.5GCx5	10.2	1100F	CDL2-17	12.7	2.2
FDJ30/3	6.9	30	3	44	BTI40/40-171	4	173F	CDL2-5	3.7	0.55
FDJ30/4	6.9	30	4	58	BTI40/40-171	4	173F	CDL2-6	4.5	0.75
FDJ30/5	6.9	30	5	73	BTI40/40-171	4	173F	CDL2-7	5.2	0.75
FDJ30/6	6.9	30	6	87	BTI40/40-171	4	173F	CDL2-9	6.7	1.1
FDJ30/7	6.9	30	7	102	BTI50/50-198	6.7	186F	CDL2-10	7.5	1.1
FDJ30/8	6.9	30	8	116	BTI50/50-198	6.7	186F	CDL2-12	9	1.5
FDJ30/9	6.9	30	9	131	1.5GCx3	8.6	192F	CDL2-13	9.7	1.5
FDJ30/10	6.9	30	10	145	1.5GCx4	9.2	195F	CDL2-14	10.5	1.5
FDJ30/11	6.9	30	11	160	1.5GCx4	9.2	195F	CDL2-15	11.2	1.5
FDJ30/12	6.9	30	12	174	1.5GCx5	10.2	1100F	CDL2-17	12.7	2.2
FDJ100/10	22.7	100	10	145	D25-30x4	20	295F	CDL2-14	10.5	1.5
FDJ100/11	22.7	100	11	160	D25-30x4	20	295F	CDL2-15	11.2	1.5
FDJ100/12	22.7	100	12	174	D25-30x4	20	295F	CDL2-17	12.7	2.2

HEAVY DUTY
FIRE FIGHTING
 EQUIPMENT



ADVANTAGES

Fire Pump Packages comprises a combination of electric motor driven pump, diesel engine driven pump and electric motor driven jockey pumps that supply for fire suppression systems.

Fire Pump Packages is required to comply with Local Civil Defense Authority regulations and International Codes of Practice e.g. National Fire Protection Association (NFPA).

Provides a swift response to fire emergencies, effectively suppressing fires and minimizing damage to property and risk to life. Its presence ensures preparedness, compliance with regulations, and peace of mind for occupants and property owners.



Rapid Response



Early Detection



Fire Suppression

SPECIFICATIONS

100GPM @4BAR					
Pump	Model	Capacity (GPM)	Head (BAR)	Power (KW)	Material
Electric	FXBD4/5-50L(50-200)	100	4	5.5	Cast Iron
Diesel Engine	XBC4/5-IS	100	4	5.5	Cast Iron
Jockey	CDL2-70	10	5	0.75	SS304
100GPM @6BAR					
Pump	Model	Capacity (GPM)	Head (BAR)	Power (KW)	Material
Electric	FXBD6/5-65L(65-250B)	100	6	7.5	Cast Iron
Diesel Engine	XBC6/5-IS	100	6	7.5	Cast Iron
Jockey	CDL2-100	10	7	1.1	SS304
200GPM @6BAR					
Pump	Model	Capacity (GPM)	Head (BAR)	Power (KW)	Material
Electric	FXBD6/10-65L(65-250)	200	6	15	Cast Iron
Diesel Engine	XBC4/5-IS	200	6	22	Cast Iron
Jockey	CDL4-90	20	7	2.2	SS304
500GPM @5BAR					
Pump	Model	Capacity (GPM)	Head (BAR)	Power (KW)	Material
Electric	FXBD5/30-100L(100-200)	500	5	22	Cast Iron
Diesel Engine	XBC5/30-IS	500	5	30	Cast Iron
Jockey	CDL12-60	50	6	4	SS304
500GPM @8BAR					
Pump	Model	Capacity (GPM)	Head (BAR)	Power (KW)	Material
Electric	FXBD8/30-100L(100-250)	500	8	37	Cast Iron
Diesel Engine	XBC8/30-D	500	8	45	Cast Iron
Jockey	CDL12-90	50	9	5.5	SS304
500GPM @10BAR					
Pump	Model	Capacity (GPM)	Head (BAR)	Power (KW)	Material
Electric	FXBD10/30-100L(100-315A)	500	10	55	Cast Iron
Diesel Engine	XBC10/30-D	500	10	55	Cast Iron
Jockey	CDL12-110	50	11	7.5	SS304
750GPM @9BAR					
Pump	Model	Capacity (GPM)	Head (BAR)	Power (KW)	Material
Electric	FXBD9/50-125L(125-250)	750	9	55	Cast Iron
Diesel Engine	XBC9/50-D	750	9	90	Cast Iron
Jockey	CDL16-90	70	10	11	SS304
750GPM @10BAR					
Pump	Model	Capacity (GPM)	Head (BAR)	Power (KW)	Material
Electric	FXBD10/50-150L(150-315A)	750	10	90	Cast Iron
Diesel Engine	XBC10/50-D	750	10	90	Cast Iron
Jockey	CDL16-100	70	11	11	SS304

HEAVY DUTY

FIRE FIGHTING EQUIPMENT



ADVANTAGES

Fire Pump Packages comprises a combination of electric motor driven pump, diesel engine driven pump and electric motor driven jockey pumps that supply for fire suppression systems.

Fire Pump Packages is required to comply with Local Civil Defense Authority regulations and International Codes of Practice e.g. National Fire Protection Association (NFPA).

Provides a swift response to fire emergencies, effectively suppressing fires and minimizing damage to property and risk to life. Its presence ensures preparedness, compliance with regulations, and peace of mind for occupants and property owners.



**Rapid
Response**



**Early
Detection**



**Fire
Suppression**

SPECIFICATIONS

Model	Pump				Diesel Engine			Jockey Pump		
	Flow		Head	Pressure	Model	Power	Diesel Engine	Model	Head	Power
	M3/h	GPM	Bar	Pis		KW			Bar	KW
FDJ25/3	5.6	25	3	44	BTI40/40-171	4	173F	CDL2-5	3.7	0.55
FDJ25/4	5.6	25	4	58	BTI40/40-171	4	173F	CDL2-6	4.5	0.75
FDJ25/5	5.6	25	5	73	BTI40/40-171	4	173F	CDL2-7	5.2	0.75
FDJ25/6	5.6	25	6	87	BTI40/40-171	4	173F	CDL2-9	6.7	1.1
FDJ25/7	5.6	25	7	102	BTI50/50-198	6.7	186F	CDL2-10	7.5	1.1
FDJ25/8	5.6	25	8	116	BTI50/50-198	6.7	186F	CDL2-12	9	1.5
FDJ25/9	5.6	25	9	131	1.5GCx3	8.6	192F	CDL2-13	9.7	1.5
FDJ25/10	5.6	25	10	145	1.5GCx4	9.2	195F	CDL2-14	10.5	1.5
FDJ25/11	5.6	25	11	160	1.5GCx4	9.2	195F	CDL2-15	11.2	1.5
FDJ25/12	5.6	25	12	174	1.5GCx5	10.2	1100F	CDL2-17	12.7	2.2
FDJ30/3	6.9	30	3	44	BTI40/40-171	4	173F	CDL2-5	3.7	0.55
FDJ30/4	6.9	30	4	58	BTI40/40-171	4	173F	CDL2-6	4.5	0.75
FDJ30/5	6.9	30	5	73	BTI40/40-171	4	173F	CDL2-7	5.2	0.75
FDJ30/6	6.9	30	6	87	BTI40/40-171	4	173F	CDL2-9	6.7	1.1
FDJ30/7	6.9	30	7	102	BTI50/50-198	6.7	186F	CDL2-10	7.5	1.1
FDJ30/8	6.9	30	8	116	BTI50/50-198	6.7	186F	CDL2-12	9	1.5
FDJ30/9	6.9	30	9	131	1.5GCx3	8.6	192F	CDL2-13	9.7	1.5
FDJ30/10	6.9	30	10	145	1.5GCx4	9.2	195F	CDL2-14	10.5	1.5
FDJ30/11	6.9	30	11	160	1.5GCx4	9.2	195F	CDL2-15	11.2	1.5
FDJ30/12	6.9	30	12	174	1.5GCx5	10.2	1100F	CDL2-17	12.7	2.2
FDJ100/10	22.7	100	10	145	D25-30x4	20	295F	CDL2-14	10.5	1.5
FDJ100/11	22.7	100	11	160	D25-30x4	20	295F	CDL2-15	11.2	1.5
FDJ100/12	22.7	100	12	174	D25-30x4	20	295F	CDL2-17	12.7	2.2

HEAVY DUTY
FIRE FIGHTING
 EQUIPMENT



ADVANTAGES

Fire Pump Packages comprises a combination of electric motor driven pump, diesel engine driven pump and electric motor driven jockey pumps that supply for fire suppression systems.

Fire Pump Packages is required to comply with Local Civil Defense Authority regulations and International Codes of Practice e.g. National Fire Protection Association (NFPA).

Provides a swift response to fire emergencies, effectively suppressing fires and minimizing damage to property and risk to life. Its presence ensures preparedness, compliance with regulations, and peace of mind for occupants and property owners.



Rapid Response



Early Detection



Fire Suppression

SPECIFICATIONS

100GPM @4BAR					
Pump	Model	Capacity (GPM)	Head (BAR)	Power (KW)	Material
Electric	FXBD4/5-50L(50-200)	100	4	5.5	Cast Iron
Diesel Engine	XBC4/5-IS	100	4	5.5	Cast Iron
Jockey	CDL2-70	10	5	0.75	SS304
100GPM @6BAR					
Pump	Model	Capacity (GPM)	Head (BAR)	Power (KW)	Material
Electric	FXBD6/5-65L(65-250B)	100	6	7.5	Cast Iron
Diesel Engine	XBC6/5-IS	100	6	7.5	Cast Iron
Jockey	CDL2-100	10	7	1.1	SS304
200GPM @6BAR					
Pump	Model	Capacity (GPM)	Head (BAR)	Power (KW)	Material
Electric	FXBD6/10-65L(65-250)	200	6	15	Cast Iron
Diesel Engine	XBC4/5-IS	200	6	22	Cast Iron
Jockey	CDL4-90	20	7	2.2	SS304
500GPM @5BAR					
Pump	Model	Capacity (GPM)	Head (BAR)	Power (KW)	Material
Electric	FXBD5/30-100L(100-200)	500	5	22	Cast Iron
Diesel Engine	XBC5/30-IS	500	5	30	Cast Iron
Jockey	CDL12-60	50	6	4	SS304
500GPM @8BAR					
Pump	Model	Capacity (GPM)	Head (BAR)	Power (KW)	Material
Electric	FXBD8/30-100L(100-250)	500	8	37	Cast Iron
Diesel Engine	XBC8/30-D	500	8	45	Cast Iron
Jockey	CDL12-90	50	9	5.5	SS304
500GPM @10BAR					
Pump	Model	Capacity (GPM)	Head (BAR)	Power (KW)	Material
Electric	FXBD10/30-100L(100-315A)	500	10	55	Cast Iron
Diesel Engine	XBC10/30-D	500	10	55	Cast Iron
Jockey	CDL12-110	50	11	7.5	SS304
750GPM @9BAR					
Pump	Model	Capacity (GPM)	Head (BAR)	Power (KW)	Material
Electric	FXBD9/50-125L(125-250)	750	9	55	Cast Iron
Diesel Engine	XBC9/50-D	750	9	90	Cast Iron
Jockey	CDL16-90	70	10	11	SS304
750GPM @10BAR					
Pump	Model	Capacity (GPM)	Head (BAR)	Power (KW)	Material
Electric	FXBD10/50-150L(150-315A)	750	10	90	Cast Iron
Diesel Engine	XBC10/50-D	750	10	90	Cast Iron
Jockey	CDL16-100	70	11	11	SS304

HEAVY DUTY

FIRE FIGHTING EQUIPMENT



ADVANTAGES

Fire Pump Packages comprises a combination of electric motor driven pump, diesel engine driven pump and electric motor driven jockey pumps that supply for fire suppression systems.

Fire Pump Packages is required to comply with Local Civil Defense Authority regulations and International Codes of Practice e.g. National Fire Protection Association (NFPA).

Provides a swift response to fire emergencies, effectively suppressing fires and minimizing damage to property and risk to life. Its presence ensures preparedness, compliance with regulations, and peace of mind for occupants and property owners.



**Rapid
Response**



**Early
Detection**



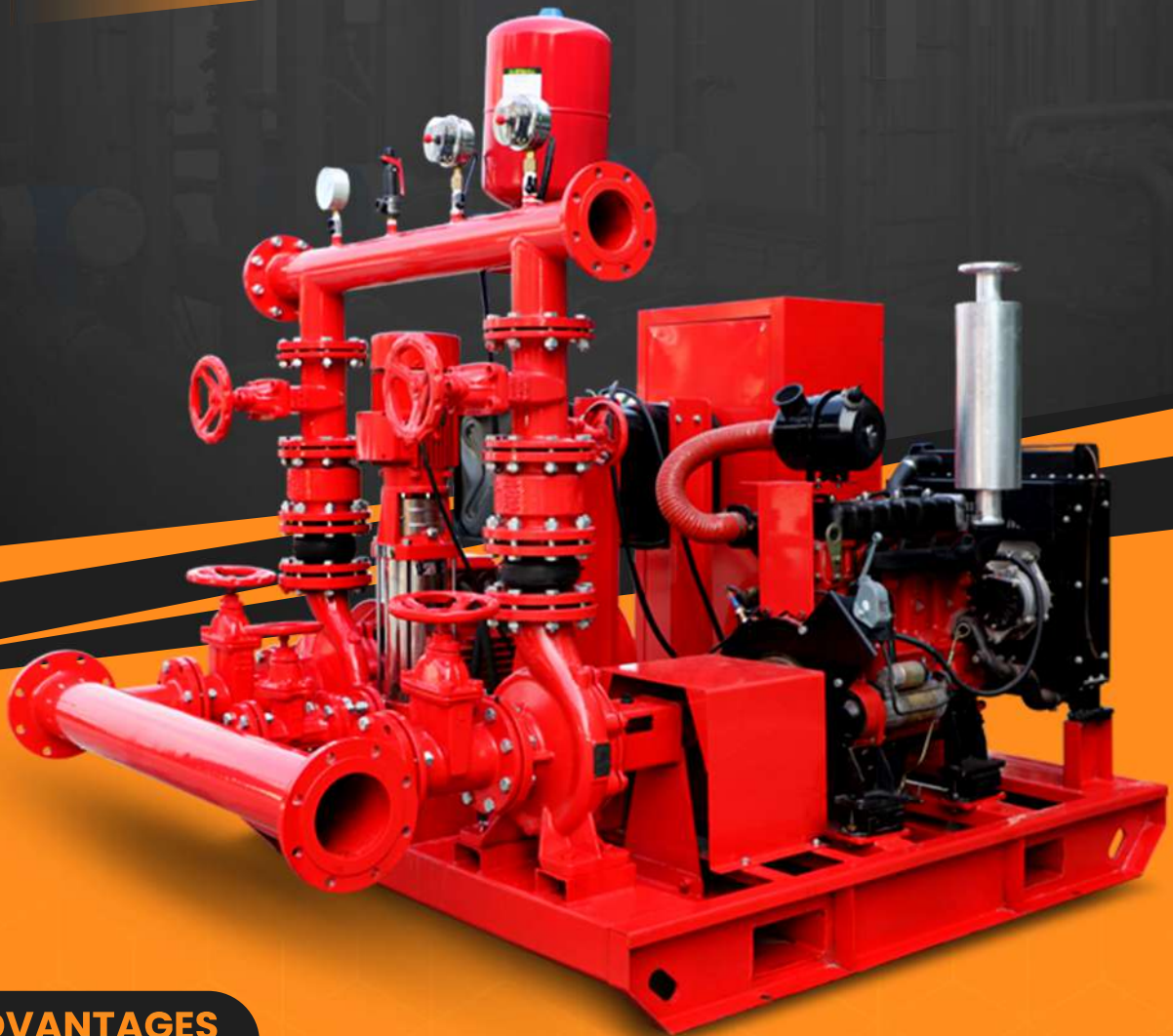
**Fire
Suppression**

SPECIFICATIONS

100GPM @4BAR					
Pump	Model	Capacity (GPM)	Head (BAR)	Power (KW)	Material
Electric	FXBD4/5-50L(50-200)	100	4	5.5	Cast Iron
Diesel Engine	XBC4/5-IS	100	4	5.5	Cast Iron
Jockey	CDL2-70	10	5	0.75	SS304
100GPM @6BAR					
Pump	Model	Capacity (GPM)	Head (BAR)	Power (KW)	Material
Electric	FXBD6/5-65L(65-250B)	100	6	7.5	Cast Iron
Diesel Engine	XBC6/5-IS	100	6	7.5	Cast Iron
Jockey	CDL2-100	10	7	1.1	SS304
200GPM @6BAR					
Pump	Model	Capacity (GPM)	Head (BAR)	Power (KW)	Material
Electric	FXBD6/10-65L(65-250)	200	6	15	Cast Iron
Diesel Engine	XBC4/5-IS	200	6	22	Cast Iron
Jockey	CDL4-90	20	7	2.2	SS304
500GPM @5BAR					
Pump	Model	Capacity (GPM)	Head (BAR)	Power (KW)	Material
Electric	FXBD5/30-100L(100-200)	500	5	22	Cast Iron
Diesel Engine	XBC5/30-IS	500	5	30	Cast Iron
Jockey	CDL12-60	50	6	4	SS304
500GPM @8BAR					
Pump	Model	Capacity (GPM)	Head (BAR)	Power (KW)	Material
Electric	FXBD8/30-100L(100-250)	500	8	37	Cast Iron
Diesel Engine	XBC8/30-D	500	8	45	Cast Iron
Jockey	CDL12-90	50	9	5.5	SS304
500GPM @10BAR					
Pump	Model	Capacity (GPM)	Head (BAR)	Power (KW)	Material
Electric	FXBD10/30-100L(100-315A)	500	10	55	Cast Iron
Diesel Engine	XBC10/30-D	500	10	55	Cast Iron
Jockey	CDL12-110	50	11	7.5	SS304
750GPM @9BAR					
Pump	Model	Capacity (GPM)	Head (BAR)	Power (KW)	Material
Electric	FXBD9/50-125L(125-250)	750	9	55	Cast Iron
Diesel Engine	XBC9/50-D	750	9	90	Cast Iron
Jockey	CDL16-90	70	10	11	SS304
750GPM @10BAR					
Pump	Model	Capacity (GPM)	Head (BAR)	Power (KW)	Material
Electric	FXBD10/50-150L(150-315A)	750	10	90	Cast Iron
Diesel Engine	XBC10/50-D	750	10	90	Cast Iron
Jockey	CDL16-100	70	11	11	SS304

HEAVY DUTY

FIRE FIGHTING EQUIPMENT



ADVANTAGES

Fire Pump Packages comprises a combination of electric motor driven pump, diesel engine driven pump and electric motor driven jockey pumps that supply for fire suppression systems.

Fire Pump Packages is required to comply with Local Civil Defense Authority regulations and International Codes of Practice e.g. National Fire Protection Association (NFPA).

Provides a swift response to fire emergencies, effectively suppressing fires and minimizing damage to property and risk to life. Its presence ensures preparedness, compliance with regulations, and peace of mind for occupants and property owners.



**Rapid
Response**



**Early
Detection**



**Fire
Suppression**

SPECIFICATIONS

100GPM @4BAR					
Pump	Model	Capacity (GPM)	Head (BAR)	Power (KW)	Material
Electric	FXBD4/5-50L(50-200)	100	4	5.5	Cast Iron
Diesel Engine	XBC4/5-IS	100	4	5.5	Cast Iron
Jockey	CDL2-70	10	5	0.75	SS304
100GPM @6BAR					
Pump	Model	Capacity (GPM)	Head (BAR)	Power (KW)	Material
Electric	FXBD6/5-65L(65-250B)	100	6	7.5	Cast Iron
Diesel Engine	XBC6/5-IS	100	6	7.5	Cast Iron
Jockey	CDL2-100	10	7	1.1	SS304
200GPM @6BAR					
Pump	Model	Capacity (GPM)	Head (BAR)	Power (KW)	Material
Electric	FXBD6/10-65L(65-250)	200	6	15	Cast Iron
Diesel Engine	XBC4/5-IS	200	6	22	Cast Iron
Jockey	CDL4-90	20	7	2.2	SS304
500GPM @5BAR					
Pump	Model	Capacity (GPM)	Head (BAR)	Power (KW)	Material
Electric	FXBD5/30-100L(100-200)	500	5	22	Cast Iron
Diesel Engine	XBC5/30-IS	500	5	30	Cast Iron
Jockey	CDL12-60	50	6	4	SS304
500GPM @8BAR					
Pump	Model	Capacity (GPM)	Head (BAR)	Power (KW)	Material
Electric	FXBD8/30-100L(100-250)	500	8	37	Cast Iron
Diesel Engine	XBC8/30-D	500	8	45	Cast Iron
Jockey	CDL12-90	50	9	5.5	SS304
500GPM @10BAR					
Pump	Model	Capacity (GPM)	Head (BAR)	Power (KW)	Material
Electric	FXBD10/30-100L(100-315A)	500	10	55	Cast Iron
Diesel Engine	XBC10/30-D	500	10	55	Cast Iron
Jockey	CDL12-110	50	11	7.5	SS304
750GPM @9BAR					
Pump	Model	Capacity (GPM)	Head (BAR)	Power (KW)	Material
Electric	FXBD9/50-125L(125-250)	750	9	55	Cast Iron
Diesel Engine	XBC9/50-D	750	9	90	Cast Iron
Jockey	CDL16-90	70	10	11	SS304
750GPM @10BAR					
Pump	Model	Capacity (GPM)	Head (BAR)	Power (KW)	Material
Electric	FXBD10/50-150L(150-315A)	750	10	90	Cast Iron
Diesel Engine	XBC10/50-D	750	10	90	Cast Iron
Jockey	CDL16-100	70	11	11	SS304

HEAVY DUTY

FIRE FIGHTING EQUIPMENT



ADVANTAGES

Fire Pump Packages comprises a combination of electric motor driven pump, diesel engine driven pump and electric motor driven jockey pumps that supply for fire suppression systems.

Fire Pump Packages is required to comply with Local Civil Defense Authority regulations and International Codes of Practice e.g. National Fire Protection Association (NFPA).

Provides a swift response to fire emergencies, effectively suppressing fires and minimizing damage to property and risk to life. Its presence ensures preparedness, compliance with regulations, and peace of mind for occupants and property owners.



**Rapid
Response**



**Early
Detection**



**Fire
Suppression**

SPECIFICATIONS

100GPM @4BAR					
Pump	Model	Capacity (GPM)	Head (BAR)	Power (KW)	Material
Electric	FXBD4/5-50L(50-200)	100	4	5.5	Cast Iron
Diesel Engine	XBC4/5-IS	100	4	5.5	Cast Iron
Jockey	CDL2-70	10	5	0.75	SS304
100GPM @6BAR					
Pump	Model	Capacity (GPM)	Head (BAR)	Power (KW)	Material
Electric	FXBD6/5-65L(65-250B)	100	6	7.5	Cast Iron
Diesel Engine	XBC6/5-IS	100	6	7.5	Cast Iron
Jockey	CDL2-100	10	7	1.1	SS304
200GPM @6BAR					
Pump	Model	Capacity (GPM)	Head (BAR)	Power (KW)	Material
Electric	FXBD6/10-65L(65-250)	200	6	15	Cast Iron
Diesel Engine	XBC4/5-IS	200	6	22	Cast Iron
Jockey	CDL4-90	20	7	2.2	SS304
500GPM @5BAR					
Pump	Model	Capacity (GPM)	Head (BAR)	Power (KW)	Material
Electric	FXBD5/30-100L(100-200)	500	5	22	Cast Iron
Diesel Engine	XBC5/30-IS	500	5	30	Cast Iron
Jockey	CDL12-60	50	6	4	SS304
500GPM @8BAR					
Pump	Model	Capacity (GPM)	Head (BAR)	Power (KW)	Material
Electric	FXBD8/30-100L(100-250)	500	8	37	Cast Iron
Diesel Engine	XBC8/30-D	500	8	45	Cast Iron
Jockey	CDL12-90	50	9	5.5	SS304
500GPM @10BAR					
Pump	Model	Capacity (GPM)	Head (BAR)	Power (KW)	Material
Electric	FXBD10/30-100L(100-315A)	500	10	55	Cast Iron
Diesel Engine	XBC10/30-D	500	10	55	Cast Iron
Jockey	CDL12-110	50	11	7.5	SS304
750GPM @9BAR					
Pump	Model	Capacity (GPM)	Head (BAR)	Power (KW)	Material
Electric	FXBD9/50-125L(125-250)	750	9	55	Cast Iron
Diesel Engine	XBC9/50-D	750	9	90	Cast Iron
Jockey	CDL16-90	70	10	11	SS304
750GPM @10BAR					
Pump	Model	Capacity (GPM)	Head (BAR)	Power (KW)	Material
Electric	FXBD10/50-150L(150-315A)	750	10	90	Cast Iron
Diesel Engine	XBC10/50-D	750	10	90	Cast Iron
Jockey	CDL16-100	70	11	11	SS304

HEAVY DUTY
FIRE FIGHTING
 EQUIPMENT



ADVANTAGES

Fire Pump Packages comprises a combination of electric motor driven pump, diesel engine driven pump and electric motor driven jockey pumps that supply for fire suppression systems.

Fire Pump Packages is required to comply with Local Civil Defense Authority regulations and International Codes of Practice e.g. National Fire Protection Association (NFPA).

Provides a swift response to fire emergencies, effectively suppressing fires and minimizing damage to property and risk to life. Its presence ensures preparedness, compliance with regulations, and peace of mind for occupants and property owners.



Rapid Response



Early Detection



Fire Suppression

SPECIFICATIONS

Model	Pump				Diesel Engine			Jockey Pump		
	Flow		Head	Pressure	Model	Power	Diesel Engine	Model	Head	Power
	M3/h	GPM	Bar	Pis		KW			Bar	KW
FDJ25/3	5.6	25	3	44	BTI40/40-171	4	173F	CDL2-5	3.7	0.55
FDJ25/4	5.6	25	4	58	BTI40/40-171	4	173F	CDL2-6	4.5	0.75
FDJ25/5	5.6	25	5	73	BTI40/40-171	4	173F	CDL2-7	5.2	0.75
FDJ25/6	5.6	25	6	87	BTI40/40-171	4	173F	CDL2-9	6.7	1.1
FDJ25/7	5.6	25	7	102	BTI50/50-198	6.7	186F	CDL2-10	7.5	1.1
FDJ25/8	5.6	25	8	116	BTI50/50-198	6.7	186F	CDL2-12	9	1.5
FDJ25/9	5.6	25	9	131	1.5GCx3	8.6	192F	CDL2-13	9.7	1.5
FDJ25/10	5.6	25	10	145	1.5GCx4	9.2	195F	CDL2-14	10.5	1.5
FDJ25/11	5.6	25	11	160	1.5GCx4	9.2	195F	CDL2-15	11.2	1.5
FDJ25/12	5.6	25	12	174	1.5GCx5	10.2	1100F	CDL2-17	12.7	2.2
FDJ30/3	6.9	30	3	44	BTI40/40-171	4	173F	CDL2-5	3.7	0.55
FDJ30/4	6.9	30	4	58	BTI40/40-171	4	173F	CDL2-6	4.5	0.75
FDJ30/5	6.9	30	5	73	BTI40/40-171	4	173F	CDL2-7	5.2	0.75
FDJ30/6	6.9	30	6	87	BTI40/40-171	4	173F	CDL2-9	6.7	1.1
FDJ30/7	6.9	30	7	102	BTI50/50-198	6.7	186F	CDL2-10	7.5	1.1
FDJ30/8	6.9	30	8	116	BTI50/50-198	6.7	186F	CDL2-12	9	1.5
FDJ30/9	6.9	30	9	131	1.5GCx3	8.6	192F	CDL2-13	9.7	1.5
FDJ30/10	6.9	30	10	145	1.5GCx4	9.2	195F	CDL2-14	10.5	1.5
FDJ30/11	6.9	30	11	160	1.5GCx4	9.2	195F	CDL2-15	11.2	1.5
FDJ30/12	6.9	30	12	174	1.5GCx5	10.2	1100F	CDL2-17	12.7	2.2
FDJ100/10	22.7	100	10	145	D25-30x4	20	295F	CDL2-14	10.5	1.5
FDJ100/11	22.7	100	11	160	D25-30x4	20	295F	CDL2-15	11.2	1.5
FDJ100/12	22.7	100	12	174	D25-30x4	20	295F	CDL2-17	12.7	2.2

HEAVY DUTY

FIRE FIGHTING EQUIPMENT



ADVANTAGES

Fire Pump Packages comprises a combination of electric motor driven pump, diesel engine driven pump and electric motor driven jockey pumps that supply for fire suppression systems.

Fire Pump Packages is required to comply with Local Civil Defense Authority regulations and International Codes of Practice e.g. National Fire Protection Association (NFPA).

Provides a swift response to fire emergencies, effectively suppressing fires and minimizing damage to property and risk to life. Its presence ensures preparedness, compliance with regulations, and peace of mind for occupants and property owners.



**Rapid
Response**



**Early
Detection**



**Fire
Suppression**

SPECIFICATIONS

Model	Pump				Diesel Engine			Jockey Pump		
	Flow		Head	Pressure	Model	Power	Diesel Engine	Model	Head	Power
	M3/h	GPM	Bar	Pis		KW			Bar	KW
FDJ25/3	5.6	25	3	44	BTI40/40-171	4	173F	CDL2-5	3.7	0.55
FDJ25/4	5.6	25	4	58	BTI40/40-171	4	173F	CDL2-6	4.5	0.75
FDJ25/5	5.6	25	5	73	BTI40/40-171	4	173F	CDL2-7	5.2	0.75
FDJ25/6	5.6	25	6	87	BTI40/40-171	4	173F	CDL2-9	6.7	1.1
FDJ25/7	5.6	25	7	102	BTI50/50-198	6.7	186F	CDL2-10	7.5	1.1
FDJ25/8	5.6	25	8	116	BTI50/50-198	6.7	186F	CDL2-12	9	1.5
FDJ25/9	5.6	25	9	131	1.5GCx3	8.6	192F	CDL2-13	9.7	1.5
FDJ25/10	5.6	25	10	145	1.5GCx4	9.2	195F	CDL2-14	10.5	1.5
FDJ25/11	5.6	25	11	160	1.5GCx4	9.2	195F	CDL2-15	11.2	1.5
FDJ25/12	5.6	25	12	174	1.5GCx5	10.2	1100F	CDL2-17	12.7	2.2
FDJ30/3	6.9	30	3	44	BTI40/40-171	4	173F	CDL2-5	3.7	0.55
FDJ30/4	6.9	30	4	58	BTI40/40-171	4	173F	CDL2-6	4.5	0.75
FDJ30/5	6.9	30	5	73	BTI40/40-171	4	173F	CDL2-7	5.2	0.75
FDJ30/6	6.9	30	6	87	BTI40/40-171	4	173F	CDL2-9	6.7	1.1
FDJ30/7	6.9	30	7	102	BTI50/50-198	6.7	186F	CDL2-10	7.5	1.1
FDJ30/8	6.9	30	8	116	BTI50/50-198	6.7	186F	CDL2-12	9	1.5
FDJ30/9	6.9	30	9	131	1.5GCx3	8.6	192F	CDL2-13	9.7	1.5
FDJ30/10	6.9	30	10	145	1.5GCx4	9.2	195F	CDL2-14	10.5	1.5
FDJ30/11	6.9	30	11	160	1.5GCx4	9.2	195F	CDL2-15	11.2	1.5
FDJ30/12	6.9	30	12	174	1.5GCx5	10.2	1100F	CDL2-17	12.7	2.2
FDJ100/10	22.7	100	10	145	D25-30x4	20	295F	CDL2-14	10.5	1.5
FDJ100/11	22.7	100	11	160	D25-30x4	20	295F	CDL2-15	11.2	1.5
FDJ100/12	22.7	100	12	174	D25-30x4	20	295F	CDL2-17	12.7	2.2

FIREFEX

MOBILE PUMP UNIT

HEAVY DUTY

FIRE FIGHTING EQUIPMENT



ADVANTAGES

Split Case Series: The "split case" design typically refers to a type of centrifugal pump design where the pump casing is split into two separate parts. This design allows for easy access to the impeller and other internal components for maintenance and repair. Split case pumps are commonly used in various industrial applications, including water supply, HVAC systems, and more.

Mobile Pump Truck: As explained earlier, a mobile pump truck is a vehicle equipped with a pump for transporting and delivering liquids, such as concrete, water, or other fluids, to various locations.



**Rapid
Response**



**Early
Detection**



**Fire
Suppression**

SPECIFICATIONS

Name	Split Case Series Mobile Pump Truck	Brand	FIREFEX
Type	Weather-proof and trailer type	Model	Split Case Series
Max. Capacity	can be customized	Max. Suction Head	can be customized
Inlet/Outlet	DN200	Move mode	Two/Four-wheel
Driving speed	According to the performance of the pump	Engine Power	50-575KW
Engine Speed	According to the performance of the pump	Fuel Tank Capacity	120-1000L
Suction Pipe	6m	Discharge Pipe	20m
Rainproof Enclosure	2mm Galvanized steel plate with polyester powder coated		

HEAVY DUTY

FIRE FIGHTING EQUIPMENT



ADVANTAGES

Mobile Pump Truck: As explained earlier, a mobile pump truck is a vehicle equipped with a pump for transporting and delivering liquids, such as concrete, water, or other fluids, to various locations.

A mobile pump truck, also known as a pump trailer or pump skid, is a portable and self-contained unit that houses a pump, power source, and other necessary components for fluid transfer and various pumping applications. These units are designed for mobility and versatility, making them suitable for a wide range of industries and applications.



**Rapid
Response**



**Early
Detection**



**Fire
Suppression**

SPECIFICATIONS

Name	Split Case Series Mobile Pump Truck	Brand	FIREFEX
Type	Weather-proof and trailer type	Model	Split Case Series
Max. Capacity	can be customized	Max. Suction Head	can be customized
Inlet/Outlet	DN200	Move mode	Two/Four-wheel
Driving speed	According to the performance of the pump	Engine Power	50-575KW
Engine Speed	According to the performance of the pump	Fuel Tank Capacity	120-1000L
Suction Pipe	6m	Discharge Pipe	20m
Rainproof Enclosure	2mm Galvanized steel plate with polyester powder coated		

HEAVY DUTY
FIRE FIGHTING
 EQUIPMENT



ADVANTAGES

Mobile Pump Truck: As explained earlier, a mobile pump truck is a vehicle equipped with a pump for transporting and delivering liquids, such as concrete, water, or other fluids, to various locations.

A mobile pump truck, also known as a pump trailer or pump skid, is a portable and self-contained unit that houses a pump, power source, and other necessary components for fluid transfer and various pumping applications. These units are designed for mobility and versatility, making them suitable for a wide range of industries and applications.



Rapid Response



Early Detection



Fire Suppression

SPECIFICATIONS

Name	Centrifugal diesel driven dewatering pumps open frame trailer	Brand	FIREFEX
Type	Weather-proof and trailer type	Model	Centrifugal pumps
Max. Capacity	can be customized	Max. Suction Head	can be customized
Inlet/Outlet	DN200	Move mode	Two/Four-wheel
Driving speed	According to the performance of the pump	Engine Power	50-575KW
Engine Speed	According to the performance of the pump	Fuel Tank Capacity	120-1000L
Suction Pipe	6m	Discharge Pipe	20m
Rainproof Enclosure	2mm Galvanized steel plate with polyester powder coated		

HEAVY DUTY

FIRE FIGHTING

EQUIPMENT



ADVANTAGES

Mobile Pump Truck: As explained earlier, a mobile pump truck is a vehicle equipped with a pump for transporting and delivering liquids, such as concrete, water, or other fluids, to various locations.

A mobile pump truck, also known as a pump trailer or pump skid, is a portable and self-contained unit that houses a pump, power source, and other necessary components for fluid transfer and various pumping applications. These units are designed for mobility and versatility, making them suitable for a wide range of industries and applications.



Rapid Response



Early Detection



Fire Suppression

SPECIFICATIONS

Name	Flow-mixing Mobile Pump Truck	Brand	FIREFEX
Type	Weather-proof and trailer type	Model	HW
Max. Capacity	can be customized	Max. Suction Head	can be customized
Inlet/Outlet	DN200	Move mode	Two/Four-wheel
Driving speed	According to the performance of the pump	Engine Power	50-575KW
Engine Speed	According to the performance of the pump	Fuel Tank Capacity	120-1000L
Suction Pipe	6m	Discharge Pipe	20m
Rainproof Enclosure	2mm Galvanized steel plate with polyester powder coated		

HEAVY DUTY
FIRE FIGHTING
 EQUIPMENT



ADVANTAGES

Mobile Pump Truck: As explained earlier, a mobile pump truck is a vehicle equipped with a pump for transporting and delivering liquids, such as concrete, water, or other fluids, to various locations.

A mobile pump truck, also known as a pump trailer or pump skid, is a portable and self-contained unit that houses a pump, power source, and other necessary components for fluid transfer and various pumping applications. These units are designed for mobility and versatility, making them suitable for a wide range of industries and applications.



Rapid Response



Early Detection



Fire Suppression

SPECIFICATIONS

Name	Flow-mixing Mobile Pump Truck	Brand	FIREFEX
Type	Weather-proof and trailer type	Model	HW
Max. Capacity	can be customized	Max. Suction Head	can be customized
Inlet/Outlet	DN200	Move mode	Two/Four-wheel
Driving speed	According to the performance of the pump	Engine Power	50-575KW
Engine Speed	According to the performance of the pump	Fuel Tank Capacity	120-1000L
Suction Pipe	6m	Discharge Pipe	20m
Rainproof Enclosure	2mm Galvanized steel plate with polyester powder coated		

HEAVY DUTY
FIRE FIGHTING
 EQUIPMENT



ADVANTAGES

Mobile Pump Truck: As explained earlier, a mobile pump truck is a vehicle equipped with a pump for transporting and delivering liquids, such as concrete, water, or other fluids, to various locations.

A mobile pump truck, also known as a pump trailer or pump skid, is a portable and self-contained unit that houses a pump, power source, and other necessary components for fluid transfer and various pumping applications. These units are designed for mobility and versatility, making them suitable for a wide range of industries and applications.



Rapid Response



Early Detection



Fire Suppression

SPECIFICATIONS

Name	Manure Pump Truck	Brand	FIREFEX
Type	Weather-proof and trailer type	Model	Manure Pump
Max. Capacity	can be customized	Max. Suction Head	can be customized
Inlet/Outlet	DN200	Move mode	Two/Four-wheel
Driving speed	According to the performance of the pump	Engine Power	50-575KW
Engine Speed	According to the performance of the pump	Fuel Tank Capacity	120-1000L
Suction Pipe	6m	Discharge Pipe	20m
Rainproof Enclosure	2mm Galvanized steel plate with polyester powder coated		

HEAVY DUTY

FIRE FIGHTING

EQUIPMENT



ADVANTAGES

Mobile Pump Truck: As explained earlier, a mobile pump truck is a vehicle equipped with a pump for transporting and delivering liquids, such as concrete, water, or other fluids, to various locations.

A mobile pump truck, also known as a pump trailer or pump skid, is a portable and self-contained unit that houses a pump, power source, and other necessary components for fluid transfer and various pumping applications. These units are designed for mobility and versatility, making them suitable for a wide range of industries and applications.



**Rapid
Response**



**Early
Detection**



**Fire
Suppression**

SPECIFICATIONS

Name	P12 Modle Mobile Pump Truck	Brand	FIREFEX
Type	Weather-proof and trailer type	Model	BDSP-12
Max. Capacity	can be customized	Max. Suction Head	can be customized
Inlet/Outlet	DN200	Move mode	Two/Four-wheel
Driving speed	According to the performance of the pump	Engine Power	50-575KW
Engine Speed	According to the performance of the pump	Fuel Tank Capacity	120-1000L
Suction Pipe	6m	Discharge Pipe	20m
Rainproof Enclosure	2mm Galvanized steel plate with polyester powder coated		

HEAVY DUTY
FIRE FIGHTING
 EQUIPMENT



ADVANTAGES

Mobile Pump Truck: As explained earlier, a mobile pump truck is a vehicle equipped with a pump for transporting and delivering liquids, such as concrete, water, or other fluids, to various locations.

A mobile pump truck, also known as a pump trailer or pump skid, is a portable and self-contained unit that houses a pump, power source, and other necessary components for fluid transfer and various pumping applications. These units are designed for mobility and versatility, making them suitable for a wide range of industries and applications.



Rapid Response



Early Detection



Fire Suppression

SPECIFICATIONS

Name	P10 Modle Mobile Pump Truck	Brand	FIREFEX
Type	Weather-proof and trailer type	Model	BDSP-10
Max. Capacity	can be customized	Max. Suction Head	can be customized
Inlet/Outlet	DN200	Move mode	Two/Four-wheel
Driving speed	According to the performance of the pump	Engine Power	50-575KW
Engine Speed	According to the performance of the pump	Fuel Tank Capacity	120-1000L
Suction Pipe	6m	Discharge Pipe	20m
Rainproof Enclosure	2mm Galvanized steel plate with polyester powder coated		

HEAVY DUTY
FIRE FIGHTING
EQUIPMENT



ADVANTAGES

Mobile Pump Truck: As explained earlier, a mobile pump truck is a vehicle equipped with a pump for transporting and delivering liquids, such as concrete, water, or other fluids, to various locations.

A mobile pump truck, also known as a pump trailer or pump skid, is a portable and self-contained unit that houses a pump, power source, and other necessary components for fluid transfer and various pumping applications. These units are designed for mobility and versatility, making them suitable for a wide range of industries and applications.



Rapid Response



Early Detection



Fire Suppression

SPECIFICATIONS

Name	1000m ³ Self Priming Series Mobile Pump Truck	Brand	FIREFEX
Type	Weather-proof and trailer type	Pump Shaft Position	Split Priming Series
Inlet Diameter	150-300mm	Outlet Diameter	150-300mm
Material	Cast Iron	Move mode	Two/Four-wheel
Driving speed	Split-Priming	Delivery Medium	Water
Flow Range	Can be Customized	Head	Can be Customized
Rainproof Enclosure	2mm Galvanized steel plate with polyester powder coated		

HEAVY DUTY
FIRE FIGHTING
EQUIPMENT



ADVANTAGES

Mobile Pump Truck: As explained earlier, a mobile pump truck is a vehicle equipped with a pump for transporting and delivering liquids, such as concrete, water, or other fluids, to various locations.

A mobile pump truck, also known as a pump trailer or pump skid, is a portable and self-contained unit that houses a pump, power source, and other necessary components for fluid transfer and various pumping applications. These units are designed for mobility and versatility, making them suitable for a wide range of industries and applications.



**Rapid
Response**



**Early
Detection**



**Fire
Suppression**

SPECIFICATIONS

Name	Large Flow Non-Clogging Mobile Fire Pump Trail	Brand	FIREFEX
Type	Weather-proof and trailer type	Pump Shaft Position	Horizontal
Inlet Diameter	150-300mm	Outlet Diameter	150-300mm
Material	Cast Iron	Move mode	Two-wheel high-speed trailer with electrocnic braking system
Driving speed	Split-Priming	Delivery Medium	Water
Flow Range	155-720m ³ /h	Head	80-360 meters
Rainproof Enclosure	2mm Galvanized steel plate with polyester powder coated		

HEAVY DUTY

FIRE FIGHTING EQUIPMENT



ADVANTAGES

Mobile Pump Truck: As explained earlier, a mobile pump truck is a vehicle equipped with a pump for transporting and delivering liquids, such as concrete, water, or other fluids, to various locations.

A mobile pump truck, also known as a pump trailer or pump skid, is a portable and self-contained unit that houses a pump, power source, and other necessary components for fluid transfer and various pumping applications. These units are designed for mobility and versatility, making them suitable for a wide range of industries and applications.



**Rapid
Response**



**Early
Detection**



**Fire
Suppression**

SPECIFICATIONS

Name	Trailer Mounted Fire Pump	Brand	FIREFEX
Type	Weather-proof and trailer type	Model	BDSP-10
Max. Capacity	500m ³ /h	Max. Suction Head	5m
Inlet/Outlet	DN200	Move mode	Two-wheel high-speed trailer with electrocnic braking system
Driving speed	Speed limit 80km/h	Engine Power	70KW
Engine Speed	1500r/min	Fuel Tank Capacity	200L
Suction Pipe	6m	Discharge Pipe	20m
Rainproof Enclosure	2mm Galvanized steel plate with polyester powder coated		

HEAVY DUTY
FIRE FIGHTING
 EQUIPMENT



ADVANTAGES

Mobile Pump Truck: As explained earlier, a mobile pump truck is a vehicle equipped with a pump for transporting and delivering liquids, such as concrete, water, or other fluids, to various locations.

A mobile pump truck, also known as a pump trailer or pump skid, is a portable and self-contained unit that houses a pump, power source, and other necessary components for fluid transfer and various pumping applications. These units are designed for mobility and versatility, making them suitable for a wide range of industries and applications.



Rapid Response



Early Detection



Fire Suppression

SPECIFICATIONS

Name	Centrifugal diesel driven dewatering pumps open frame trailer	Brand	FIREFEX
Type	Weather-proof and trailer type	Model	BDSP-10
Max. Capacity	500m ³ /h	Max. Suction Head	5m
Inlet/Outlet	DN200	Move mode	Two-wheel high-speed trailer with electrocnic braking system
Driving speed	Speed limit 80km/h	Engine Power	70KW
Engine Speed	1500r/min	Fuel Tank Capacity	200L
Suction Pipe	6m	Discharge Pipe	20m
Rainproof Enclosure	2mm Galvanized steel plate with polyester powder coated		

HEAVY DUTY
FIRE FIGHTING
EQUIPMENT



ADVANTAGES

Mobile Pump Truck: As explained earlier, a mobile pump truck is a vehicle equipped with a pump for transporting and delivering liquids, such as concrete, water, or other fluids, to various locations.

A mobile pump truck, also known as a pump trailer or pump skid, is a portable and self-contained unit that houses a pump, power source, and other necessary components for fluid transfer and various pumping applications. These units are designed for mobility and versatility, making them suitable for a wide range of industries and applications.



**Rapid
Response**



**Early
Detection**



**Fire
Suppression**

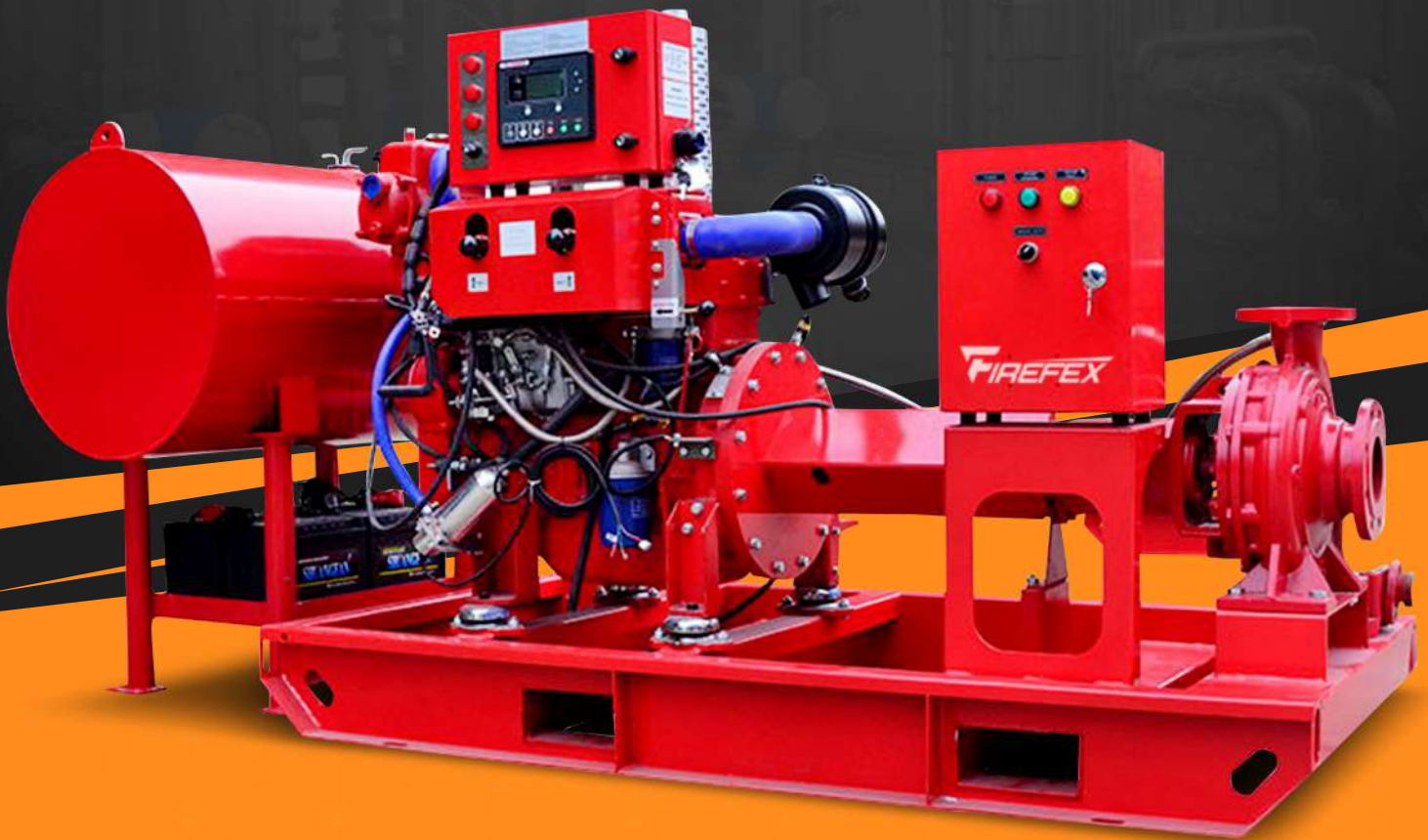
FIREFEX

DIESEL FIRE

PUMP

HEAVY DUTY

FIRE FIGHTING EQUIPMENT



ADVANTAGES

Fire Pump Packages comprises a combination of electric motor driven pump, diesel engine driven pump and electric motor driven jockey pumps that supply for fire suppression systems.

Fire Pump Packages is required to comply with Local Civil Defense Authority regulations and International Codes of Practice e.g. National Fire Protection Association (NFPA).

Provides a swift response to fire emergencies, effectively suppressing fires and minimizing damage to property and risk to life. Its presence ensures preparedness, compliance with regulations, and peace of mind for occupants and property owners.



**Rapid
Response**



**Early
Detection**

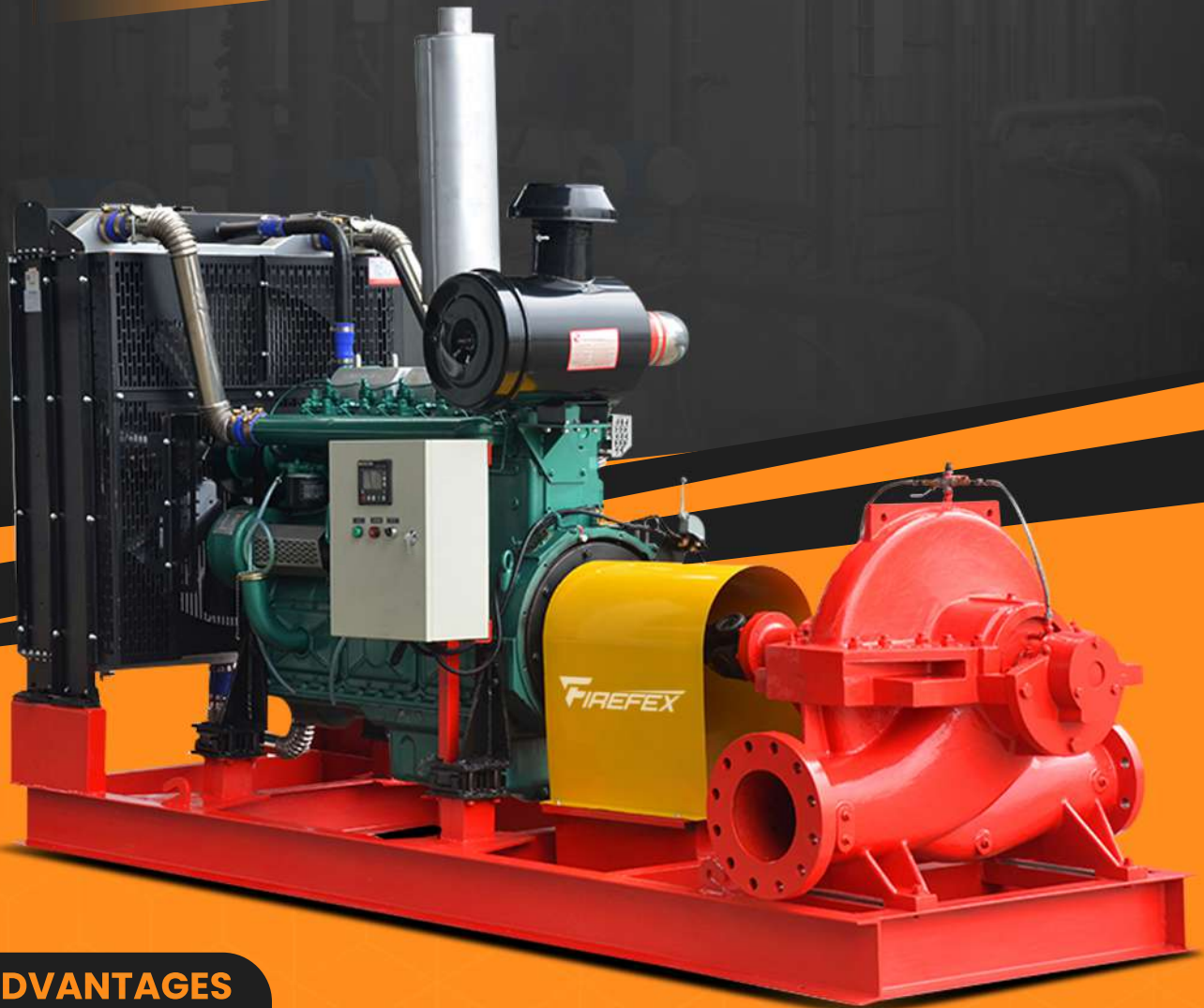


**Fire
Suppression**

HEAVY DUTY

FIRE FIGHTING

EQUIPMENT



ADVANTAGES

Fire Pump Packages comprises a combination of electric motor driven pump, diesel engine driven pump and electric motor driven jockey pumps that supply for fire suppression systems.

Fire Pump Packages is required to comply with Local Civil Defense Authority regulations and International Codes of Practice e.g. National Fire Protection Association (NFPA).

Provides a swift response to fire emergencies, effectively suppressing fires and minimizing damage to property and risk to life. Its presence ensures preparedness, compliance with regulations, and peace of mind for occupants and property owners.



Rapid Response



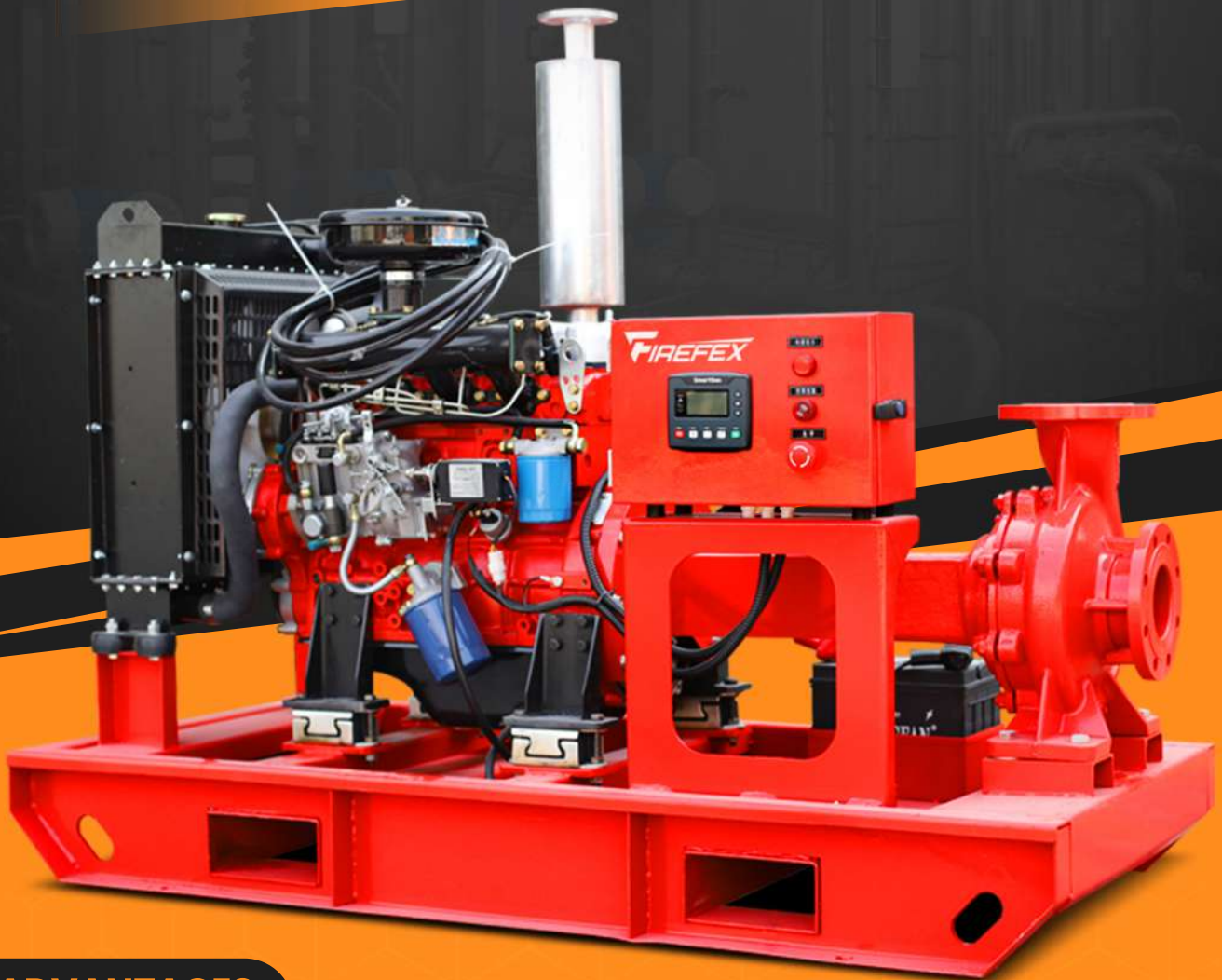
Early Detection



Fire Suppression

HEAVY DUTY

FIRE FIGHTING EQUIPMENT



ADVANTAGES

Fire Pump Packages comprises a combination of electric motor driven pump, diesel engine driven pump and electric motor driven jockey pumps that supply for fire suppression systems.

Fire Pump Packages is required to comply with Local Civil Defense Authority regulations and International Codes of Practice e.g. National Fire Protection Association (NFPA).

Provides a swift response to fire emergencies, effectively suppressing fires and minimizing damage to property and risk to life. Its presence ensures preparedness, compliance with regulations, and peace of mind for occupants and property owners.



**Rapid
Response**



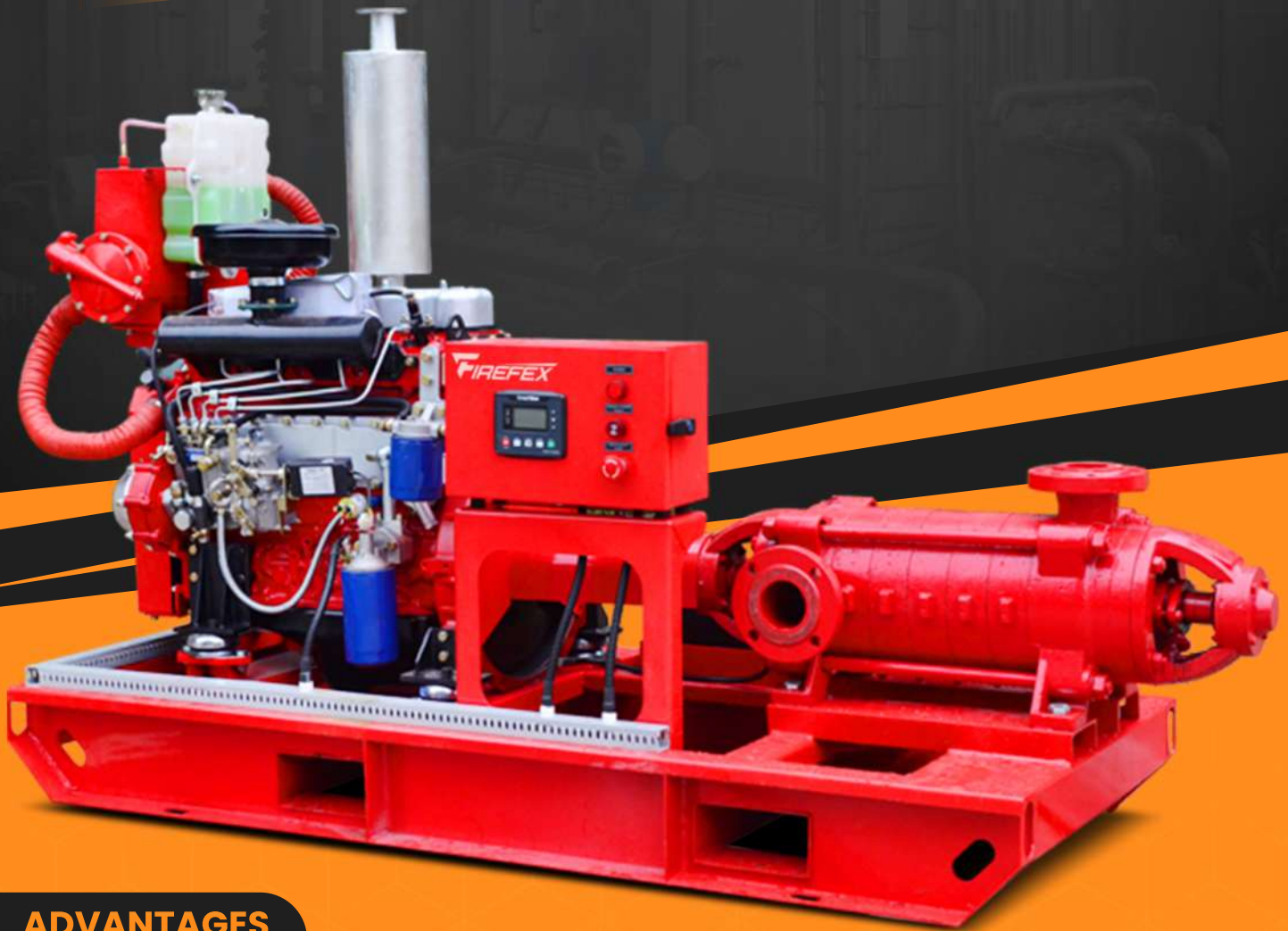
**Early
Detection**



**Fire
Suppression**

HEAVY DUTY

FIRE FIGHTING EQUIPMENT



ADVANTAGES

Fire Pump Packages comprises a combination of electric motor driven pump, diesel engine driven pump and electric motor driven jockey pumps that supply for fire suppression systems.

Fire Pump Packages is required to comply with Local Civil Defense Authority regulations and International Codes of Practice e.g. National Fire Protection Association (NFPA).

Provides a swift response to fire emergencies, effectively suppressing fires and minimizing damage to property and risk to life. Its presence ensures preparedness, compliance with regulations, and peace of mind for occupants and property owners.



**Rapid
Response**



**Early
Detection**



**Fire
Suppression**

HEAVY DUTY

FIRE FIGHTING EQUIPMENT



ADVANTAGES

Fire Pump Packages comprises a combination of electric motor driven pump, diesel engine driven pump and electric motor driven jockey pumps that supply for fire suppression systems.

Fire Pump Packages is required to comply with Local Civil Defense Authority regulations and International Codes of Practice e.g. National Fire Protection Association (NFPA).

Provides a swift response to fire emergencies, effectively suppressing fires and minimizing damage to property and risk to life. Its presence ensures preparedness, compliance with regulations, and peace of mind for occupants and property owners.



**Rapid
Response**



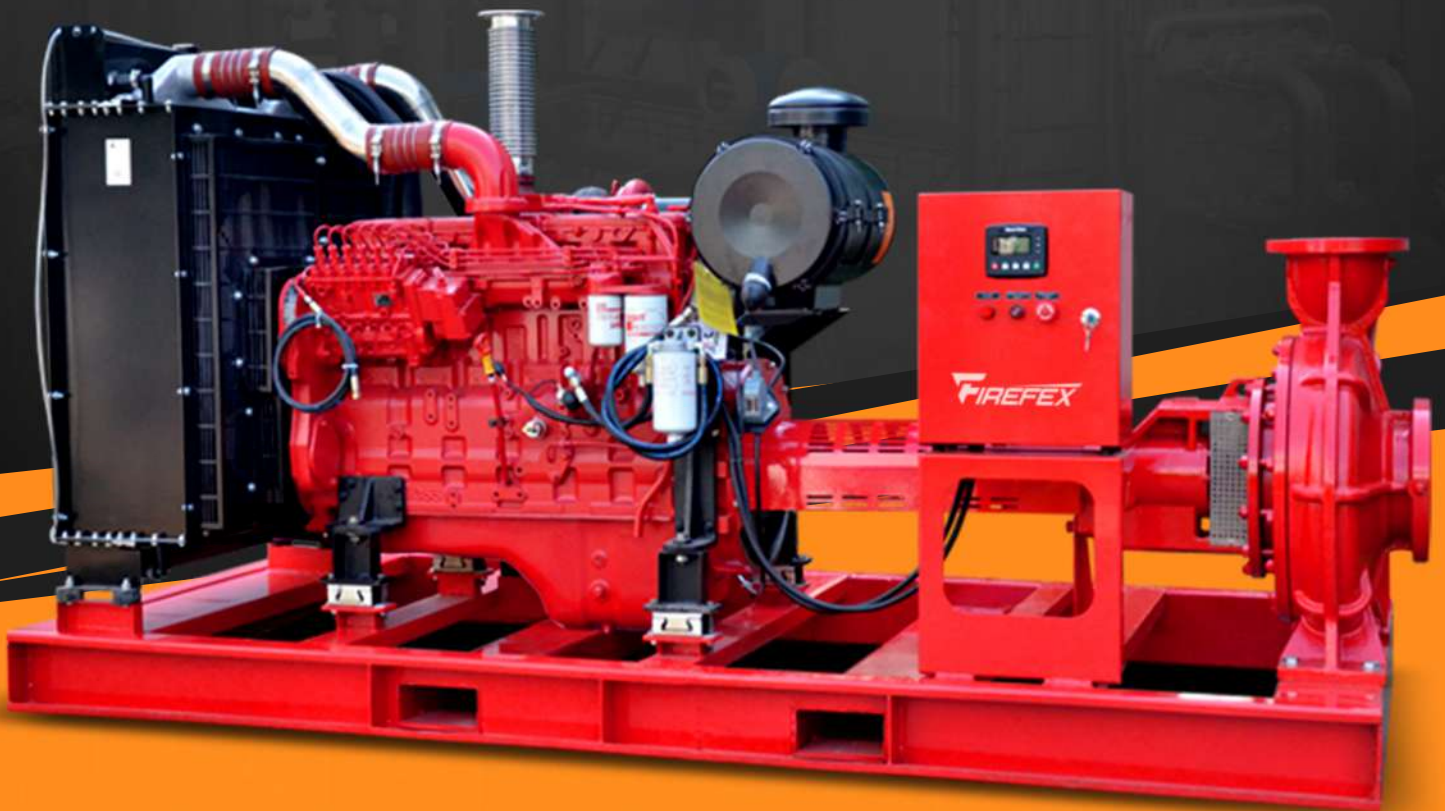
**Early
Detection**



**Fire
Suppression**

HEAVY DUTY

FIRE FIGHTING EQUIPMENT



ADVANTAGES

Fire Pump Packages comprises a combination of electric motor driven pump, diesel engine driven pump and electric motor driven jockey pumps that supply for fire suppression systems.

Fire Pump Packages is required to comply with Local Civil Defense Authority regulations and International Codes of Practice e.g. National Fire Protection Association (NFPA).

Provides a swift response to fire emergencies, effectively suppressing fires and minimizing damage to property and risk to life. Its presence ensures preparedness, compliance with regulations, and peace of mind for occupants and property owners.



**Rapid
Response**



**Early
Detection**



**Fire
Suppression**

HEAVY DUTY
FIRE FIGHTING
EQUIPMENT



ADVANTAGES

Fire Pump Packages comprises a combination of electric motor driven pump, diesel engine driven pump and electric motor driven jockey pumps that supply for fire suppression systems.

Fire Pump Packages is required to comply with Local Civil Defense Authority regulations and International Codes of Practice e.g. National Fire Protection Association (NFPA).

Provides a swift response to fire emergencies, effectively suppressing fires and minimizing damage to property and risk to life. Its presence ensures preparedness, compliance with regulations, and peace of mind for occupants and property owners.



Rapid Response



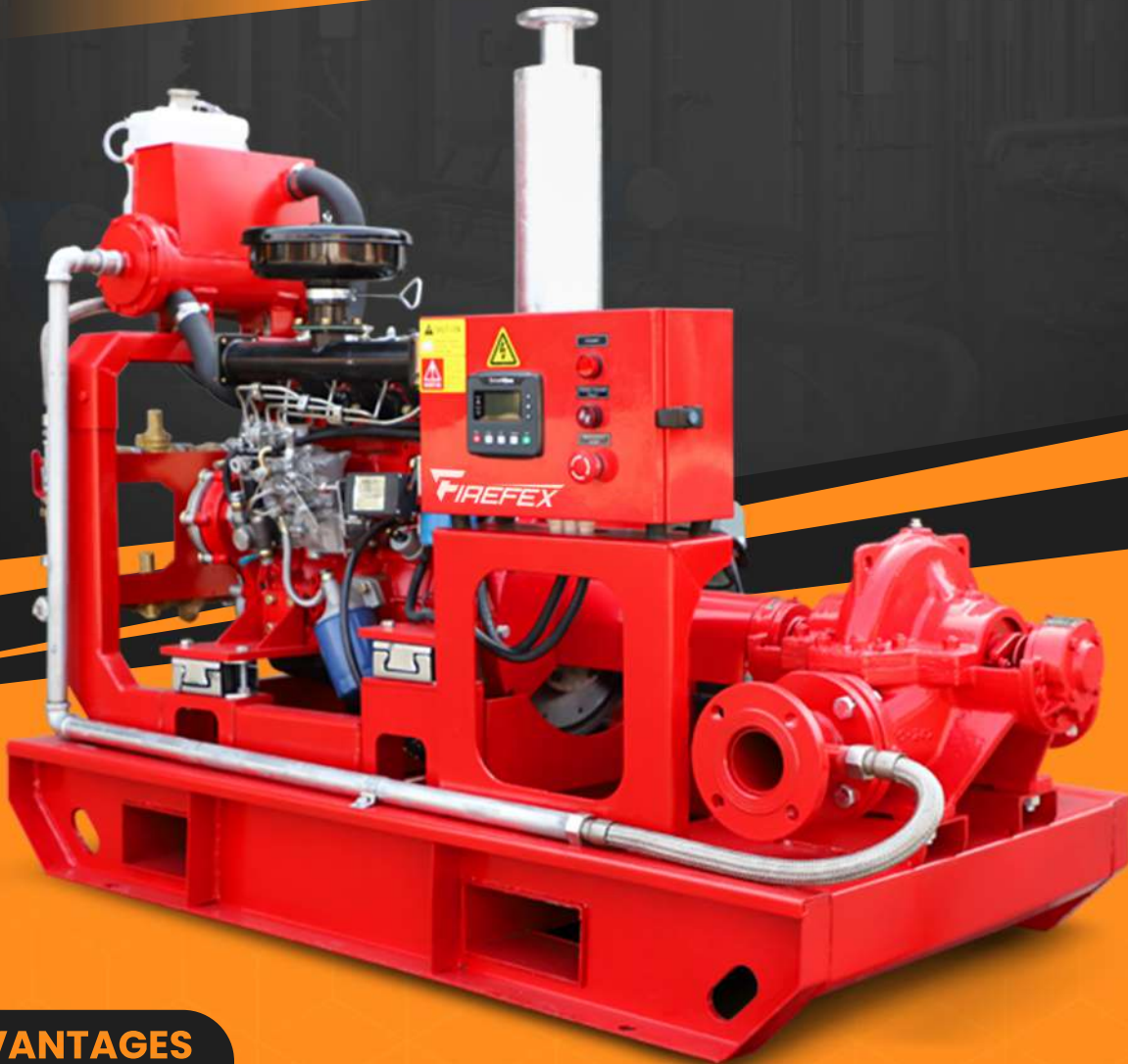
Early Detection



Fire Suppression

HEAVY DUTY

FIRE FIGHTING EQUIPMENT



ADVANTAGES

Fire Pump Packages comprises a combination of electric motor driven pump, diesel engine driven pump and electric motor driven jockey pumps that supply for fire suppression systems.

Fire Pump Packages is required to comply with Local Civil Defense Authority regulations and International Codes of Practice e.g. National Fire Protection Association (NFPA).

Provides a swift response to fire emergencies, effectively suppressing fires and minimizing damage to property and risk to life. Its presence ensures preparedness, compliance with regulations, and peace of mind for occupants and property owners.



**Rapid
Response**



**Early
Detection**



**Fire
Suppression**

HEAVY DUTY
FIRE FIGHTING
EQUIPMENT



ADVANTAGES

Fire Pump Packages comprises a combination of electric motor driven pump, diesel engine driven pump and electric motor driven jockey pumps that supply for fire suppression systems.

Fire Pump Packages is required to comply with Local Civil Defense Authority regulations and International Codes of Practice e.g. National Fire Protection Association (NFPA).

Provides a swift response to fire emergencies, effectively suppressing fires and minimizing damage to property and risk to life. Its presence ensures preparedness, compliance with regulations, and peace of mind for occupants and property owners.



Rapid Response



Early Detection



Fire Suppression

HEAVY DUTY
FIRE FIGHTING
EQUIPMENT



ADVANTAGES

Fire Pump Packages comprises a combination of electric motor driven pump, diesel engine driven pump and electric motor driven jockey pumps that supply for fire suppression systems.

Fire Pump Packages is required to comply with Local Civil Defense Authority regulations and International Codes of Practice e.g. National Fire Protection Association (NFPA).

Provides a swift response to fire emergencies, effectively suppressing fires and minimizing damage to property and risk to life. Its presence ensures preparedness, compliance with regulations, and peace of mind for occupants and property owners.



Rapid Response

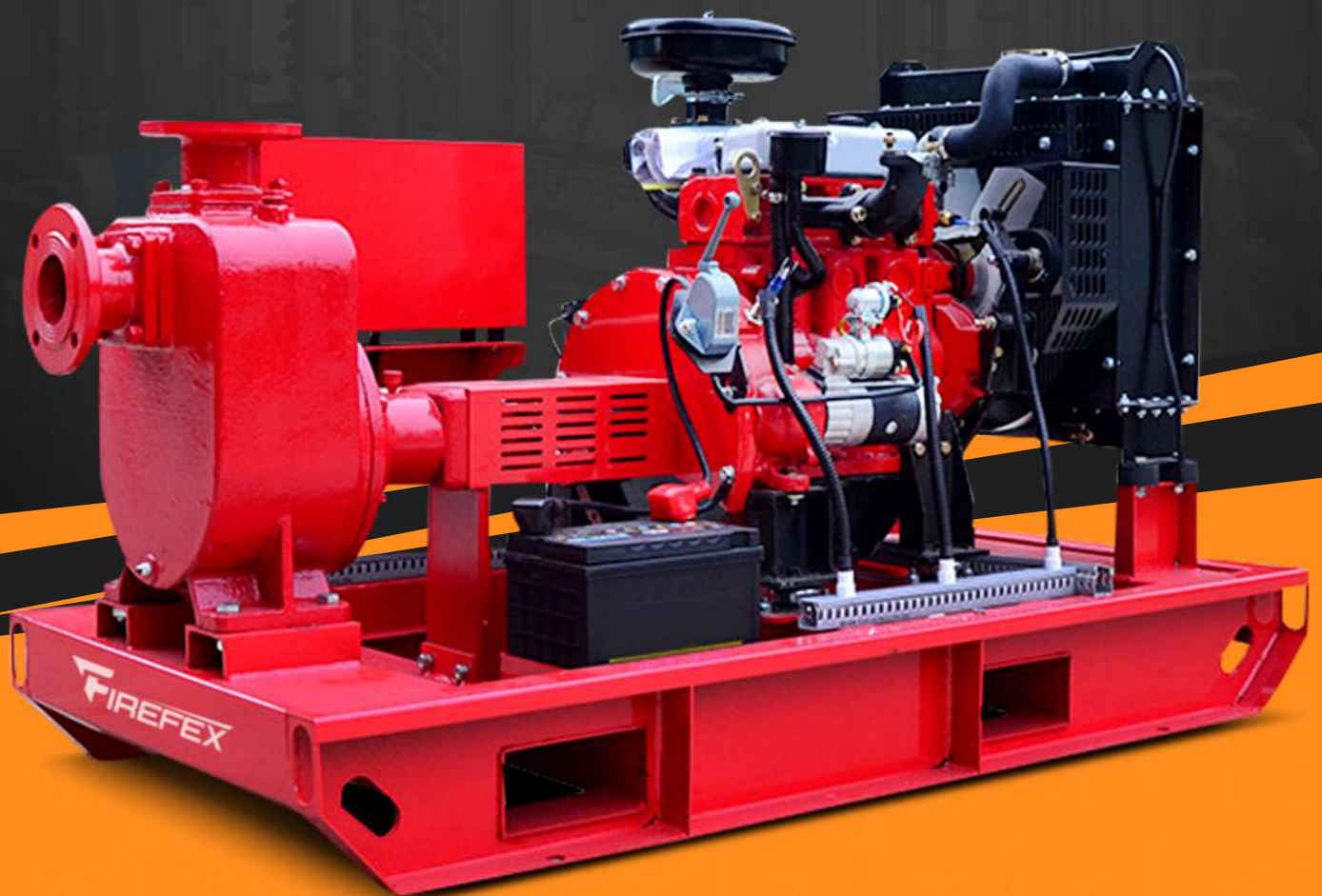


Early Detection



Fire Suppression

HEAVY DUTY
FIRE FIGHTING
 EQUIPMENT



ADVANTAGES

Fire Pump Packages comprises a combination of electric motor driven pump, diesel engine driven pump and electric motor driven jockey pumps that supply for fire suppression systems.

Fire Pump Packages is required to comply with Local Civil Defense Authority regulations and International Codes of Practice e.g. National Fire Protection Association (NFPA).

Provides a swift response to fire emergencies, effectively suppressing fires and minimizing damage to property and risk to life. Its presence ensures preparedness, compliance with regulations, and peace of mind for occupants and property owners.



Rapid Response



Early Detection



Fire Suppression

HEAVY DUTY

FIRE FIGHTING EQUIPMENT



ADVANTAGES

Fire Pump Packages comprises a combination of electric motor driven pump, diesel engine driven pump and electric motor driven jockey pumps that supply for fire suppression systems.

Fire Pump Packages is required to comply with Local Civil Defense Authority regulations and International Codes of Practice e.g. National Fire Protection Association (NFPA).

Provides a swift response to fire emergencies, effectively suppressing fires and minimizing damage to property and risk to life. Its presence ensures preparedness, compliance with regulations, and peace of mind for occupants and property owners.



**Rapid
Response**



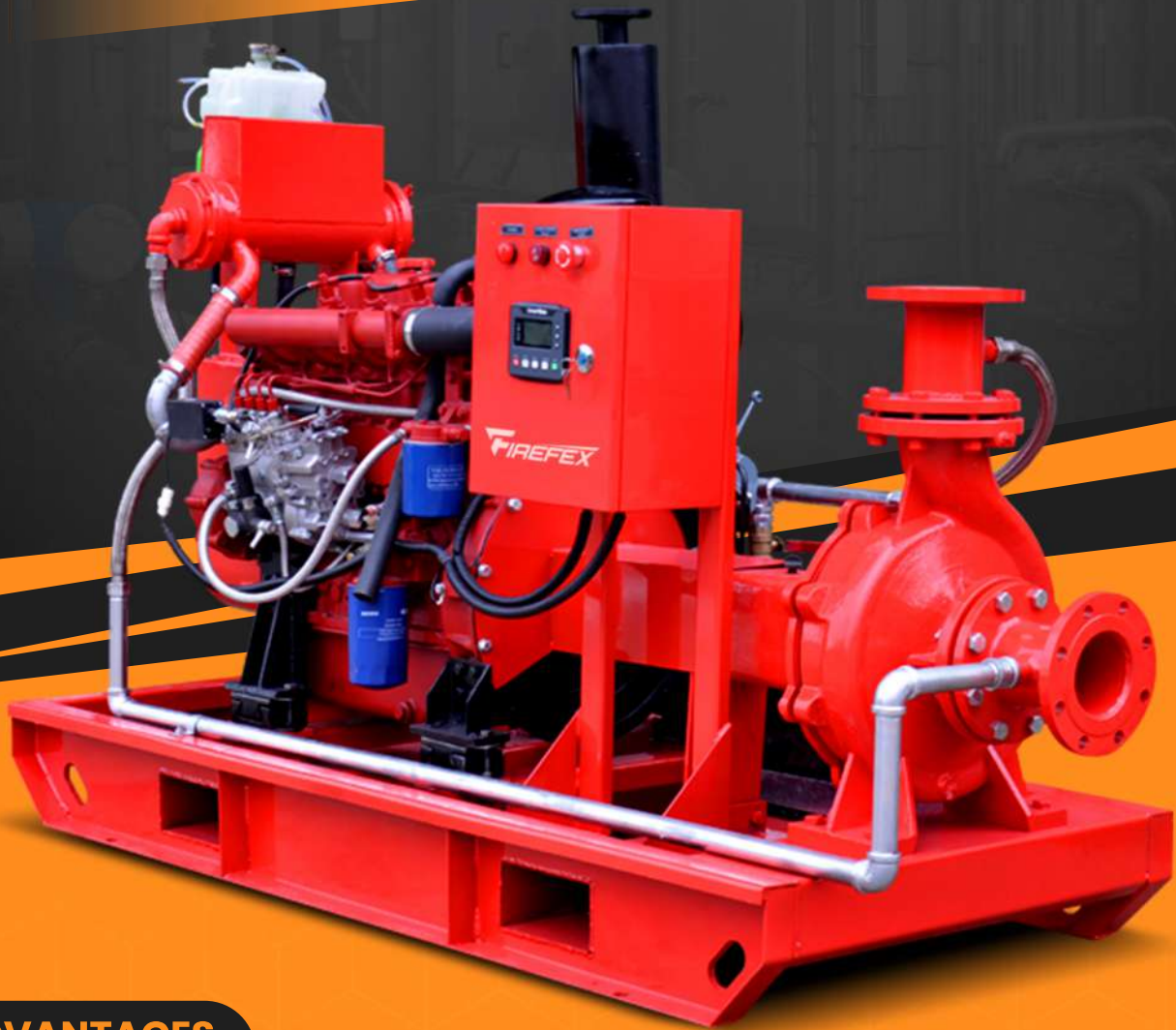
**Early
Detection**



**Fire
Suppression**

HEAVY DUTY

FIRE FIGHTING EQUIPMENT



ADVANTAGES

Fire Pump Packages comprises a combination of electric motor driven pump, diesel engine driven pump and electric motor driven jockey pumps that supply for fire suppression systems.

Fire Pump Packages is required to comply with Local Civil Defense Authority regulations and International Codes of Practice e.g. National Fire Protection Association (NFPA).

Provides a swift response to fire emergencies, effectively suppressing fires and minimizing damage to property and risk to life. Its presence ensures preparedness, compliance with regulations, and peace of mind for occupants and property owners.



**Rapid
Response**



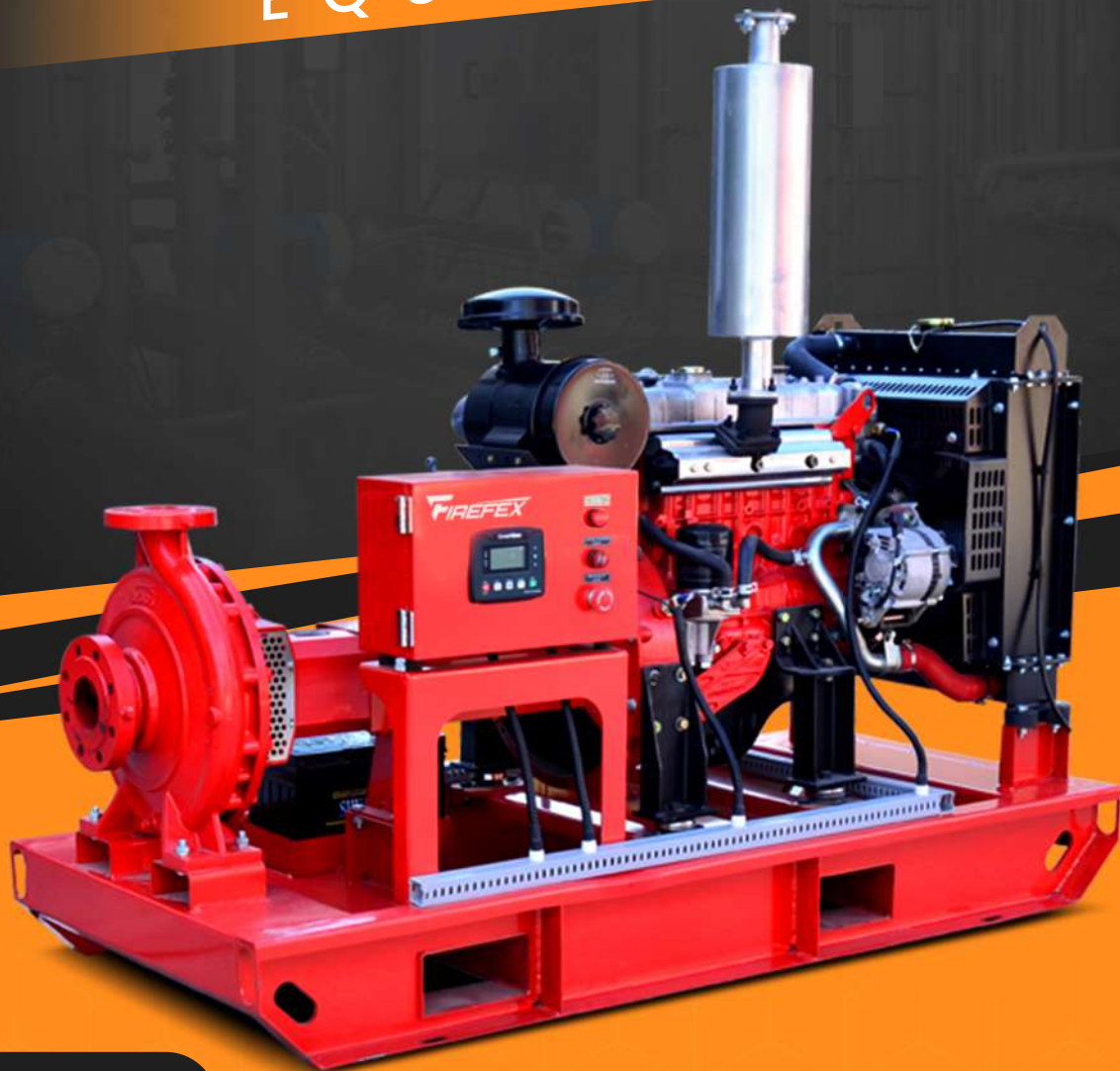
**Early
Detection**



**Fire
Suppression**

HEAVY DUTY

FIRE FIGHTING EQUIPMENT



ADVANTAGES

Fire Pump Packages comprises a combination of electric motor driven pump, diesel engine driven pump and electric motor driven jockey pumps that supply for fire suppression systems.

Fire Pump Packages is required to comply with Local Civil Defense Authority regulations and International Codes of Practice e.g. National Fire Protection Association (NFPA).

Provides a swift response to fire emergencies, effectively suppressing fires and minimizing damage to property and risk to life. Its presence ensures preparedness, compliance with regulations, and peace of mind for occupants and property owners.



**Rapid
Response**

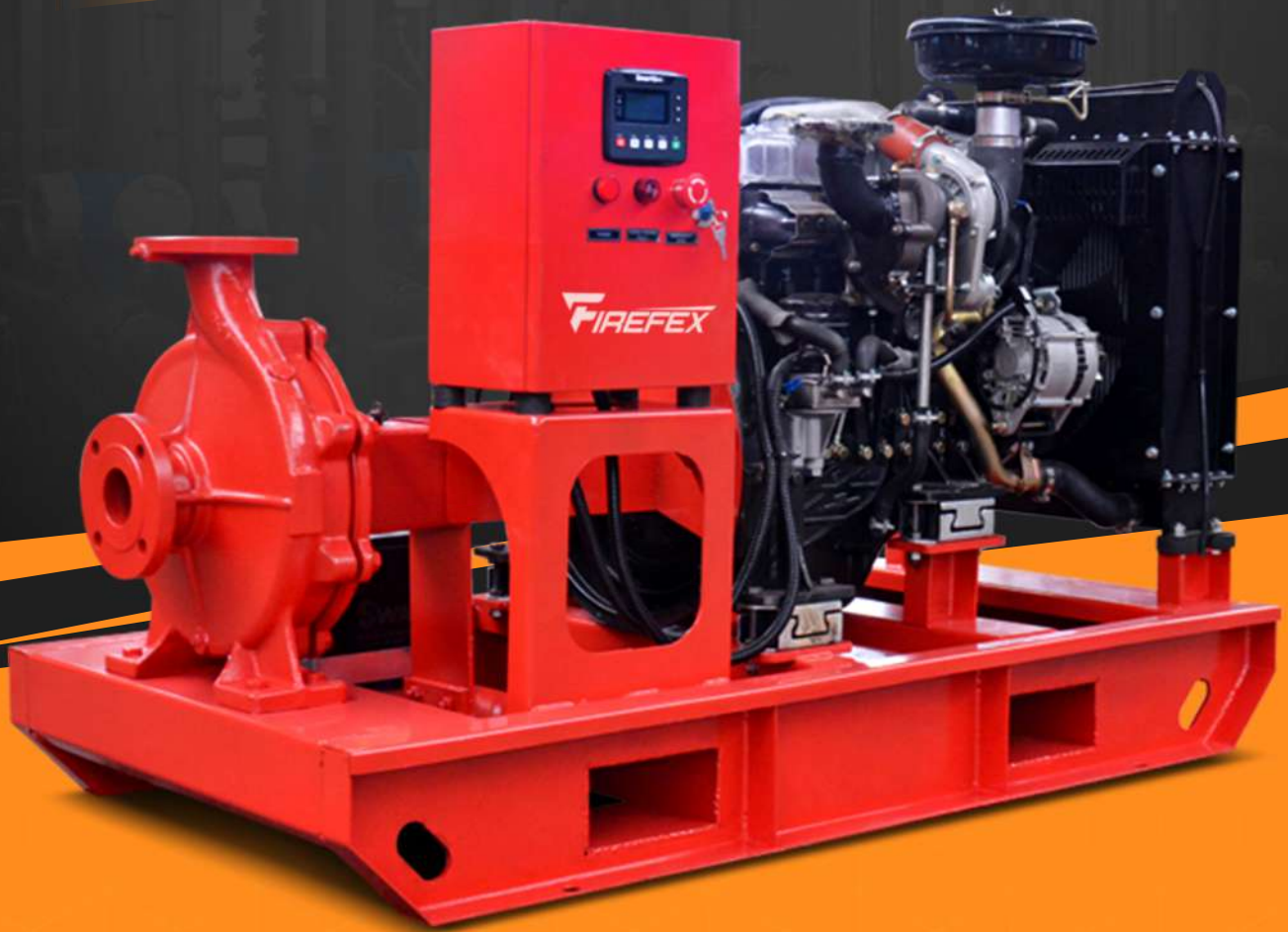


**Early
Detection**



**Fire
Suppression**

HEAVY DUTY
FIRE FIGHTING
 EQUIPMENT



ADVANTAGES

Fire Pump Packages comprises a combination of electric motor driven pump, diesel engine driven pump and electric motor driven jockey pumps that supply for fire suppression systems.

Fire Pump Packages is required to comply with Local Civil Defense Authority regulations and International Codes of Practice e.g. National Fire Protection Association (NFPA).

Provides a swift response to fire emergencies, effectively suppressing fires and minimizing damage to property and risk to life. Its presence ensures preparedness, compliance with regulations, and peace of mind for occupants and property owners.



Rapid Response

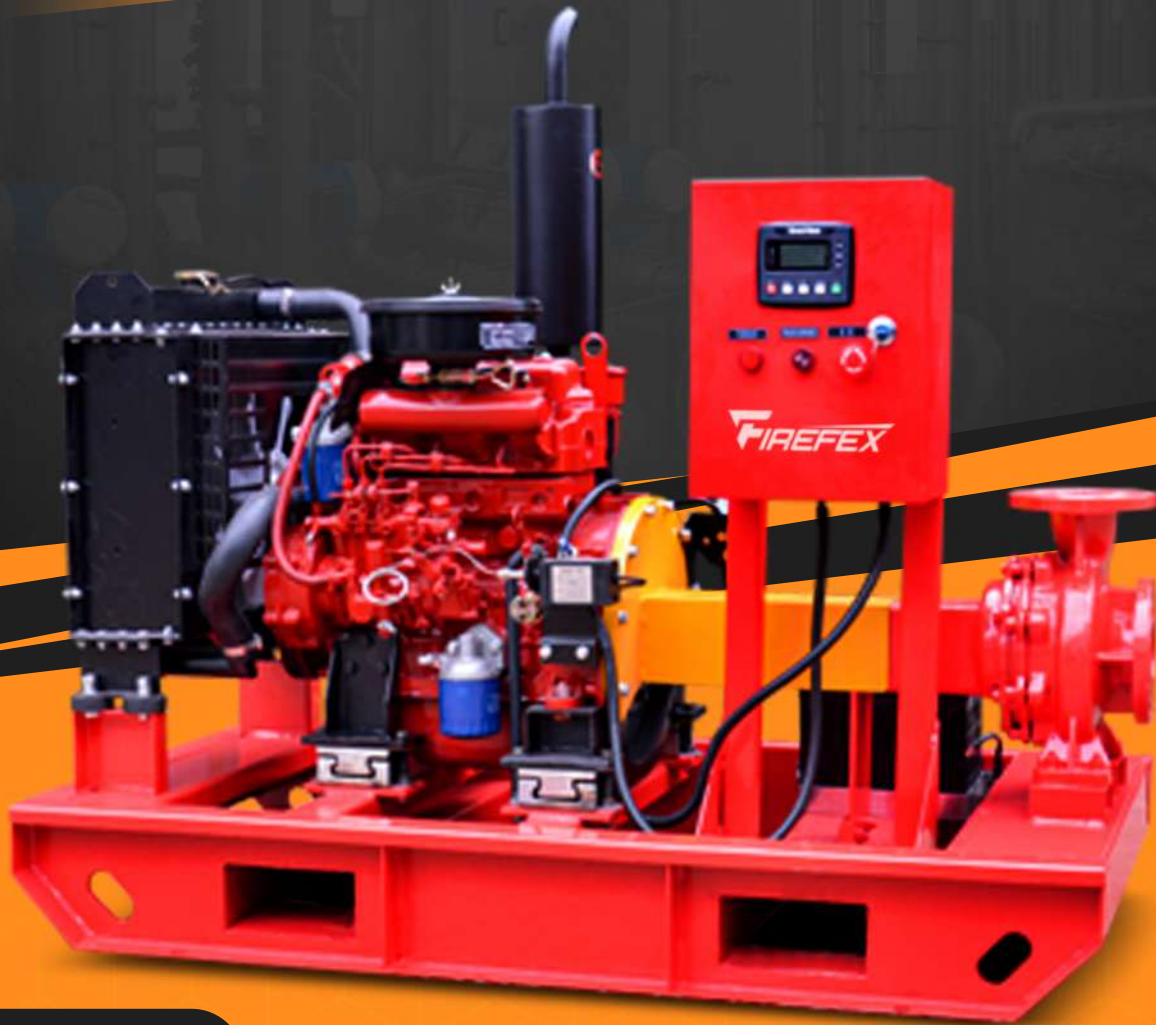


Early Detection



Fire Suppression

HEAVY DUTY
FIRE FIGHTING
 EQUIPMENT



ADVANTAGES

Fire Pump Packages comprises a combination of electric motor driven pump, diesel engine driven pump and electric motor driven jockey pumps that supply for fire suppression systems.

Fire Pump Packages is required to comply with Local Civil Defense Authority regulations and International Codes of Practice e.g. National Fire Protection Association (NFPA).

Provides a swift response to fire emergencies, effectively suppressing fires and minimizing damage to property and risk to life. Its presence ensures preparedness, compliance with regulations, and peace of mind for occupants and property owners.



Rapid Response



Early Detection



Fire Suppression

HEAVY DUTY

FIRE FIGHTING EQUIPMENT



ADVANTAGES

Fire Pump Packages comprises a combination of electric motor driven pump, diesel engine driven pump and electric motor driven jockey pumps that supply for fire suppression systems.

Fire Pump Packages is required to comply with Local Civil Defense Authority regulations and International Codes of Practice e.g. National Fire Protection Association (NFPA).

Provides a swift response to fire emergencies, effectively suppressing fires and minimizing damage to property and risk to life. Its presence ensures preparedness, compliance with regulations, and peace of mind for occupants and property owners.



**Rapid
Response**



**Early
Detection**



**Fire
Suppression**

HEAVY DUTY
FIRE FIGHTING
 EQUIPMENT



ADVANTAGES

Fire Pump Packages comprises a combination of electric motor driven pump, diesel engine driven pump and electric motor driven jockey pumps that supply for fire suppression systems.

Fire Pump Packages is required to comply with Local Civil Defense Authority regulations and International Codes of Practice e.g. National Fire Protection Association (NFPA).

Provides a swift response to fire emergencies, effectively suppressing fires and minimizing damage to property and risk to life. Its presence ensures preparedness, compliance with regulations, and peace of mind for occupants and property owners.



Rapid Response



Early Detection



Fire Suppression

HEAVY DUTY
FIRE FIGHTING
 EQUIPMENT



ADVANTAGES

The portable fire pump is well known for its simple structure, light weight, compact structure and high efficiency.

Portable fire pump is mainly applied to the professional fire brigade, industrial and mining enterprises, and fire protection for suburbs/villages. It is most suitable for the place where the fire tender can't enter into.

Provides a swift response to fire emergencies, effectively suppressing fires and minimizing damage to property and risk to life. Its presence ensures preparedness, compliance with regulations, and peace of mind for occupants and property owners.



Rapid Response



Early Detection



Fire Suppression

SPECIFICATIONS

25HP		13HP	
Total Dimension	650 x 610 x 650 mm	Total Dimension	630 x 550 x 510mm
Device Weight	95kg	Device Weight	65kg
Max. Capacity	475.5 gpm	Max. Capacity	370 gpm
Rated Capacity	285 gpm	Rated Capacity	238 gpm
Pump Head	90m	Pump Head	65m
Out Pressure	0.7Mpa	Out Pressure	0.6Mpa
Inlet Size	φ 80mm	Inlet Size	φ 65mm
Outlet Size	φ 65mm	Outlet Size	φ 65mm
Dia. of Nozzle	φ 19mm	Dia. of Nozzle	φ 19mm
Type of Inlet	Screw type	Type of Inlet	Screw type
Maximum Suction	7m	Maximum Suction	7m
Pump Priming Time	≤ 20s	Pump Priming Time	≤ 20s
Starting Way	Electric Start, Manual Start	Starting Way	Electric Start, Manual Start
Model of Engine	25HP, GX690	Model of Engine	13HP, GX390
Impeller	230mm Aluminium Alloy	Impeller	170mm Aluminium Alloy
9HP		20HP	
Total Dimension	550 x 500 x 400mm	Total Dimension	650 x 710 x 650mm
Device Weight	≤ 40kg	Device Weight	≤ 80kg
Max. Capacity	111 gpm	Max. Capacity	211 gpm
Pump Head	45m	Pump Head	78m
Out Pressure	0.4Mpa	Out Pressure	0.63Mpa
Inlet Size	φ 65mm	Inlet Size	φ 80mm
Outlet Size	φ 65mm	Outlet Size	φ 65mm
Dia. of Nozzle	φ 19mm	Dia. of Nozzle	φ 19mm
Type of Inlet	Screw type	Type of Inlet	Screw type
Maximum Suction	7m	Maximum Suction	9m
Pump Priming Time	≤ 20s	Pump Priming Time	≤ 20s
Starting Way	Electric Start, Manual Start	Starting Way	Electric Start, Manual Start
Model of Engine	9HP, 177F	Model of Engine	20HP, 2V78F
Speed	3600r/min	Speed	3600r/min

HEAVY DUTY
FIRE FIGHTING
 EQUIPMENT



ADVANTAGES

Fire Booster Pump series fire pneumatic water supply equipment is composed of fire pressure stabilizing device, fire pump and electric control system.

As a complete set of equipment, it can meet all technical specifications of automatic fire water supply. In addition, it can accept and process all kinds of fire signals, replace the fire control center, and send out all kinds of operation and fault alarm signals.



Rapid Response



Early Detection



Fire Suppression

FIREFEX

ELECTRIC FIRE PUMP

HEAVY DUTY

FIRE FIGHTING

EQUIPMENT



ADVANTAGES

Series OTS pumps are single stage, double suction with horizontally split casings. They are suitable for pumping unsettled water, clean water, non-drinkable or hydrocarbon at a temperature not exceeded 105° C

Provides a swift response to fire emergencies, effectively suppressing fires and minimizing damage to property and risk to life. Its presence ensures preparedness, compliance with regulations, and peace of mind for occupants and property owners.



Rapid Response

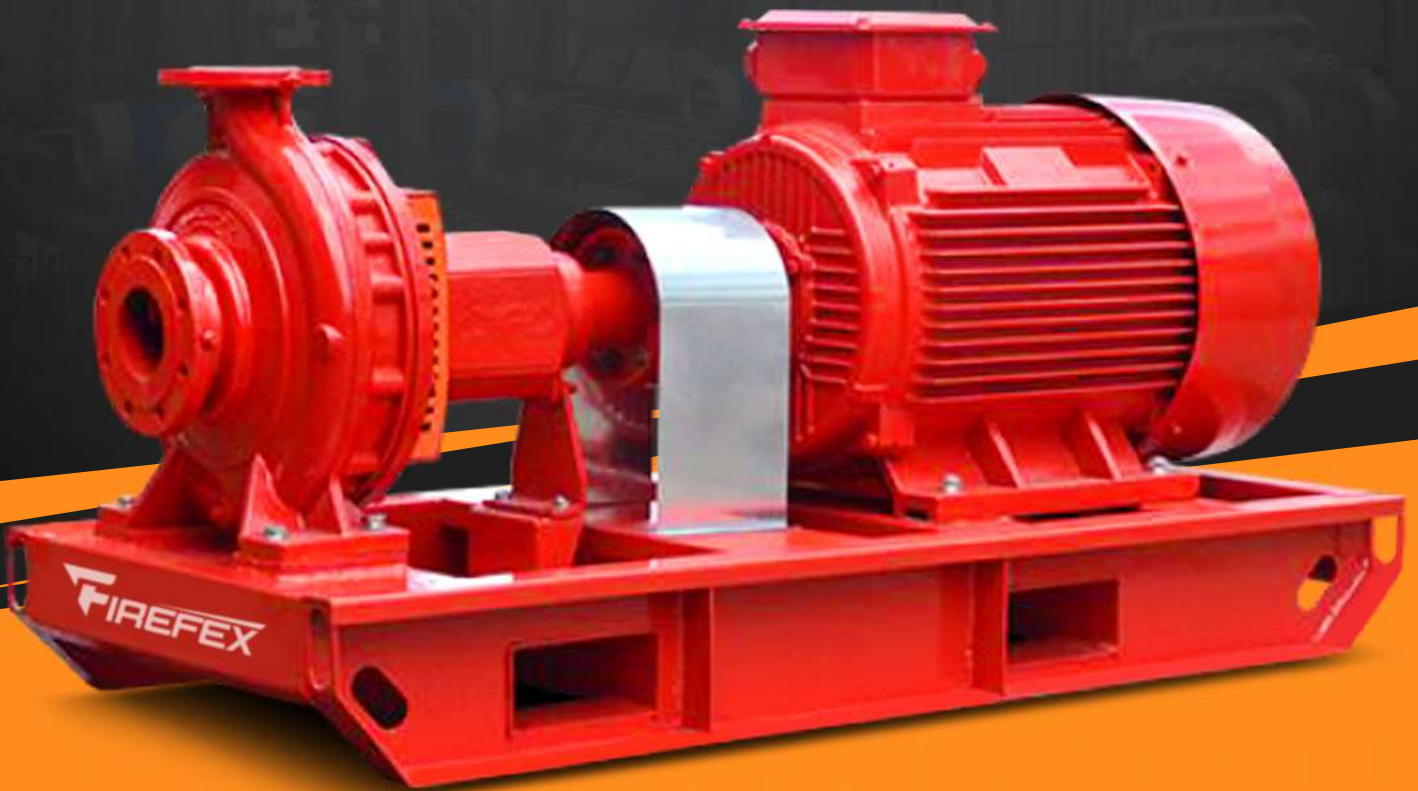


Early Detection



Fire Suppression

HEAVY DUTY
FIRE FIGHTING
EQUIPMENT



ADVANTAGES

This product combines the strengths and abroad and is designed with excellent hydraulic models, therefore, its excellent hydraulic performance and structural features ensure that the user can effectively reduce the operating cost of the pump in various applications.

Provides a swift response to fire emergencies, effectively suppressing fires and minimizing damage to property and risk to life. Its presence ensures preparedness, compliance with regulations, and peace of mind for occupants and property owners.



Rapid Response



Early Detection



Fire Suppression

HEAVY DUTY

FIRE FIGHTING

EQUIPMENT



ADVANTAGES

This product combines the strengths and abroad and is designed with excellent hydraulic models, therefore, its excellent hydraulic performance and structural features ensure that the user can effectively reduce the operating cost of the pump in various applications.

Provides a swift response to fire emergencies, effectively suppressing fires and minimizing damage to property and risk to life. Its presence ensures preparedness, compliance with regulations, and peace of mind for occupants and property owners.



Rapid Response

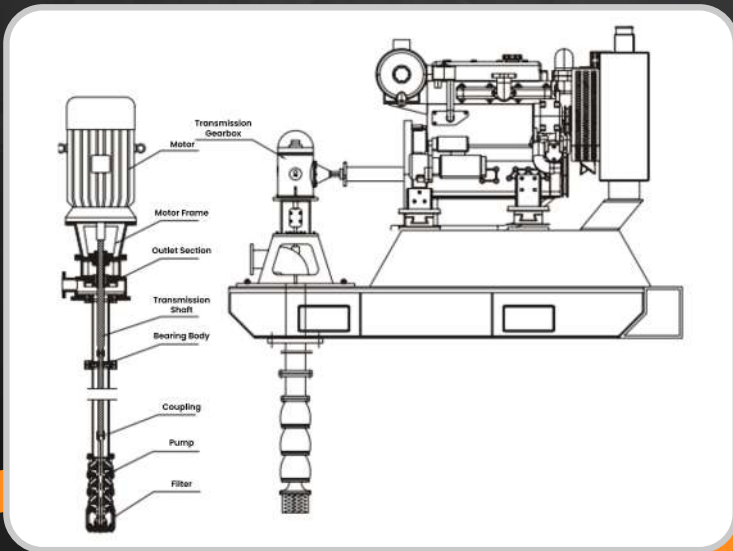


Early Detection



Fire Suppression

HEAVY DUTY
FIRE FIGHTING
 EQUIPMENT



Rapid Response

Early Detection

Fire Suppression

ADVANTAGES

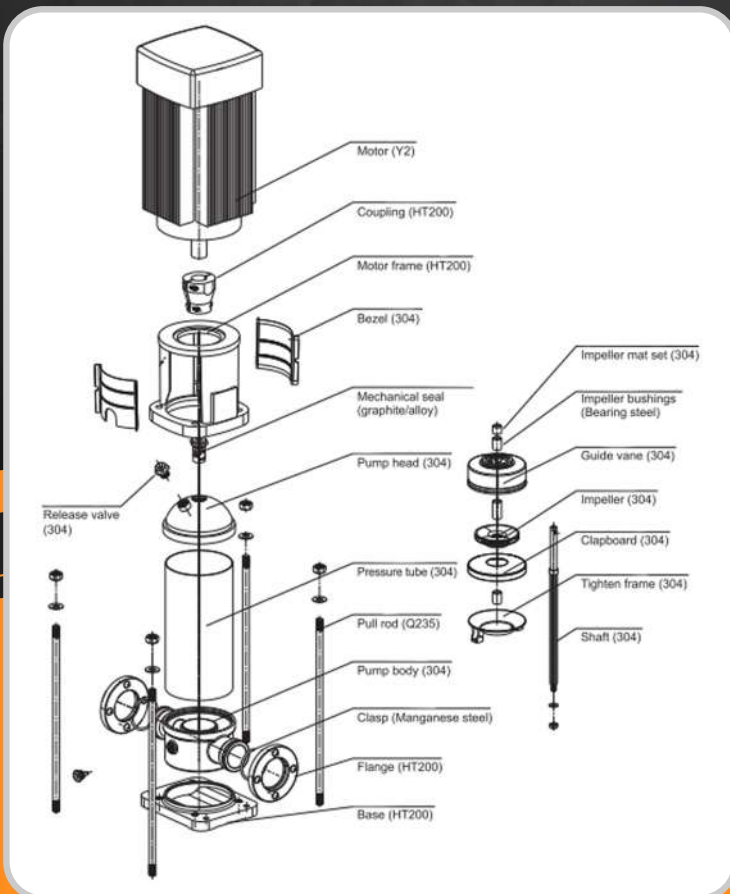
Vertical Turbine Pump is used for pumping normal temperature water and warm water under 100°C from, wells, river, lake , sea. Type JCW are better used for city, factory dirty water and water containing great sand in river and sea, widely used in factories and mines, city and countries, petrolatum filed, plant and irrigation on farmland.

The driving shaft in deep well pumps are supported by rubber bearings, and is lubricated and diving shaft must adopt protection pip and is lubricated and cooled by out water. Axial force is carried by vertical hollow shaft motor or drive with roller bearing or sliding bearing which is lubricated by grease.

HEAVY DUTY

FIRE FIGHTING

EQUIPMENT



ADVANTAGES

CDL/CDLF is a kind of vertical non-self priming multistage centrifugal pump, which is driven by a standard electric motor. The motor output shaft directly connect with the pump shaft through a coupling. The pressure-resistant cylinder and flow passage components are fixed between pump head and inlet & outlet section with stay bolts.

The inlet and outlet are located at the pump bottom at the same plane. This kind of pump can be equipped with an intelligent protector to effectively prevent it from dry-running, out-of-phase and overload.

HEAVY DUTY

FIRE FIGHTING

EQUIPMENT



ADVANTAGES

Electric Vertical single-stage fire pumps are mainly used for the fixed fire hydrant system; automatic spraying fire system used by all sorts of organs, projects, high-floor buildings etc. and can be transferred with the clear water without solid grain under 100 or its equivalence, also be used for public-used water providing system for fire, living, production, construction and municipality.

Provides a swift response to fire emergencies, effectively suppressing fires and minimizing damage to property and risk to life. Its presence ensures preparedness, compliance with regulations, and peace of mind for occupants and property owners.



**Rapid
Response**



**Early
Detection**



**Fire
Suppression**

INDOTARA®

PT. INDOTARA PERSADA

Our Marketing Office and After Sales Service Center

Head Office

50/F, Menara BCA Grand Indonesia
Jl. M.H. Thamrin No.1
Jakarta Pusat 10310
021 - 5032 1910
dam@indotara.id



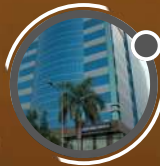
Semarang Office

Wisma HSBC Lt. 6 Suite 609
Jl. Gajah Mada No.135
Semarang, Jawa Tengah 50134
021 - 5032 1910
smg.dam@indotara.id



Marketing Office

APL Tower 6th Floor No. 6 Central Park,
Jl. Letjen S. Parman Kav 28,
Jakarta Barat - 11440
021 - 5032 1910
dam@indotara.id



Medan Office

Sutomo Tower Lantai 5H
Jl. Sutomo Ujung No.28,
Kota Medan, Sumatera Utara 20235
021 - 5032 1910
mdn.dam@indotara.id



Graha Indotara

Millenium Industrial Estate
Jl. Millenium 22 Blok R3 No. 1
Cikupa, Tangerang - Banten 15720
021 - 5032 1910
dam@indotara.id



Makassar Office

Fajar Graha Pena Lt. 5
Jl. Urip Sumoharjo No. 20,
Makassar - South Sulawesi 90234
021 - 5032 1910
mks.dam@indotara.id



Bandung Office

Wisma HSBC Lt. 6 Suite B
Jl. Asia Afrika No. 116
Bandung, Jawa Barat 40112
021 - 5032 1910
bdg.dam@indotara.id



Balikpapan Office

Panin Tower Lt. 8 - Grand Sudirman
Jl. Jendral Sudirman No.7 Klandasan Ilir,
Balikpapan Kota, Kalimantan Timur 76114
021 - 5032 1910
bpp.dam@indotara.id



Surabaya Office

Japfa Indoland Center, Tower I Lt. 10/1008
Jl. Jendral Basuki Rahmat 129-137
Surabaya 60271
021 - 5032 1910
sby.dam@indotara.id



Bali Office

Benoa Square Lt. 2
Jl. Bypass Ngurah Rai No. 21 A Kedonganan,
Kuta Badung - Bali Indonesia 80361
021 - 5032 1910
bali.dam@indotara.id



Yogyakarta Office

Hartono Mall Yogyakarta Lt. 3
Kaliwaru, Condongcatur,
Sleman, Yogyakarta 55281
021 - 5032 1910
yog.dam@indotara.id



Singapore Office

Marina Bay Financial Centre Tower 3
17F, 12 Marina Boulevard
Singapore - 018982
021 - 5032 1910
sing.dam@indotara.id

