

**ORISON**

# Biomass & Feed Equipment



**LOW  
PRICE**



**BEST  
QUALITY**



**LONG  
WARRANTY**

# TABLE OF CONTENT

OCS Series Crusher .....	1
OCS138 Series Crusher .....	2
ODSPM Double Shaft Paddle Mixer .....	3
OSSPM Single Shaft Paddle Mixer .....	4
OPS Preserver .....	5
OPM Pellet Machine .....	6
OGS Series Granulator .....	7
OPC Pellet Cooler .....	8
OPSC Plane Rotary Screen .....	9
OPMC Permanent Magnet Cylinder & OBE Bucket Elevator .....	10
OSPDC Dust Collector .....	11
OMPS Packaging Scale .....	12
OPT Pneumatic Tee & OPG Pneumatic Gate .....	13
OLAE Liquid Adding Equipment .....	14
OSC Screw Conveyor & OBS Batching Scale .....	15
OSCU / OCS Scraper Conveyor .....	16
Hammer Mill .....	17
OTPM Twin Shaft Paddle Mixer .....	18
OHDRM Ribbon Mixer .....	19
ODM Drum Mixer .....	20
Feed Pellet Machine (OPM Series) .....	21
OPM25C .....	22
OPM32B .....	23
OPM35B .....	24
OPM40B .....	25
OPM45B .....	26
Organic Fertilizer Pellet Machine .....	27
OOFPM25F .....	28
OOFPM32F .....	29
OOFPM35F .....	30
Feed Extruder OFE80-B .....	31
Feed Extruder OFE160-B .....	32
Feed Extruder Line .....	33
OGSE Screening Equipment .....	34
Pellet Packing Machine .....	35
Complete Equipment Set (OPMS250) .....	36
Complete Plant System .....	37
Premix Unit .....	38
Auxiliary Equipment & Belt Conveyor .....	39
Splitter & Tubular Magnetic Separator .....	40
Cylinder Pre-clean Sieve & Cone Sieve .....	41
Screw Feeder & Screw Conveyor .....	42
Bucket Elevator & Drag Conveyor .....	43
Sawdust Pellet Mill (Motor Model B) .....	44
Sawdust Pellet Mill (Motor Model C) .....	45
Sawdust Pellet Mill (Diesel Model A) .....	46
Sawdust Pellet Mill (Gasoline Model Q) .....	47
Sawdust Pellet Mill (PTO Model P) .....	48
Roller Pellet Mill (Motor) .....	49
Roller Pellet Mill (Diesel) .....	50
Plastic Processing Pellet Mill .....	51
Hammer Mill (Motor Driven) .....	52
Hammer Mill (Diesel Driven) .....	53
Airflow Dryer .....	54
Biomass Mobile Pellet Plant .....	55
Small Pellet Plant (200–500 kg/h) .....	56
Biomass Pellet Mill (OBPM25 / OBPM35) .....	57
Biomass Pellet Mill (OBPM42 / OBPM508) .....	58
Wood Chipper .....	59
Hammer Mill (Heavy Duty) .....	60
Drum Dryer .....	61
Counterflow Cooler .....	62
Biomass Pellet Line .....	63
Fodder Pellet Mill (Model B) .....	64
Fodder Pellet Mill (Model C) .....	65
Fodder Pellet Mill (Diesel Model A) .....	66
Fodder Pellet Mill (Gasoline Model Q) .....	67
Fodder Pellet Mill (PTO Model P) .....	68
Feed Pellet Line (OFPL 300 / 400) .....	69
Ring Die Pellet Mill For Feeds .....	70
Feed Pellet Line & Feed Mash Line .....	71

TYPE

# OCS Series Crusher



- \* The use of wide crushing chamber can greatly improve the service life of hammer and sieve plate, especially the service life of small-diameter sieve plate;
- \* The innovative design of the rotor assembly makes the rotor run more smoothly, even after the hammer is worn, it can still run smoothly, and the temperature of the crushing chamber is lower;
- \* The overall humanized design of the host is convenient for control and lower noise;
- \* The improvement of screen pressing mechanism makes the disassembly and assembly of screen plate more convenient, safer and more reliable;
- \* The coarse and fine crushing functions can be easily realized to improve the crushing efficiency.

Type	OCS56x36	OCS56x40	OCS66x60	OCS66x80	OCS66x100
Power (KW)	22	37	55/75	90/110	132/160
Rotor Diameter (mm)	560	560	660	660	660
Spindle Speed (r/min)	2980	2980	2980	2980	2980
Mesh Size (mm)	3.0	3.0	3.0	3.0	3.0
Output (t/h)	3-5	5-8	9-16	12-22	18-28

TYPE

# OCS138 Series Crusher



Rust-Resistant  
Stainless



Best Quality  
Material



Strong & Durable  
Constructions

- \*The series is universal hammer mill, and sieve pore size of 1.5-3.0 is suitable;
- \*The crushing chamber adopts a water drop-shaped structure, with a re-crushing chamber and shear device at the bottom, improving the crushing efficiency;
- \*The rotor is specially designed, with two different hammer screen clearances to meet the exchange of different granularity ;
- \*The working surface of the hammer is welded with hard materials, extending service life;
- \*Rotor motor and the mill are installed in the same heavy-duty base, using the pin coupling direct transmission. The rotor is dynamically balanced and can operate in both forward and reverse directions ;
- \*It can be widely used for crushing various granular materials such as maize, sorghum, wheat, and beans.

Type	OCS138x40	OCS138x50	OCS138x60	OCS138x78	OCS138x98
Rotor Diameter (mm)	1370	1370	1370	1370	1370
Spindle Speed (r/min)	1480	1480	1480	1480	1480
Chamber Width	400	500	600	780	980
Power (Kw)	90/110	110/132	132/160	200/250	250/315
Output (t/h)	15-25	20-35	30-50	35-60	45-75

## TYPE

# ORISON

### ODSPM Series Double Shaft Paddle Mixer



Rust-Resistant  
Stainless



Best Quality  
Material



Strong & Durable  
Constructions



- \* Low speed, high efficiency, gentle action. You can add a variety of liquid;
- \* Short mixing time, and high mixing uniformity;
- \* New double door discharging control mechanism, with no leakage, discharging rapidly, no residue;
- \* Applicable to mix the powder material of the premix, livestock and poultry feed, aquatic feed, additives, food, chemical, pharmaceuticals and other industries.

Type	ODSPM0.5	ODSPM1	ODSPM2	ODSPM4	ODSPM6
Capacity (m <sup>3</sup> )	0.5	1	2	4	6
Mix Capacity Per Lot (Kg/bat)	250	500	1000	2000	3000
Mixing Time (s)	60-180	60-180	60-180	60-180	60-180
Mixed Uniformity	≥95	≥95	≥95	≥95	≥95
Power (KW)	5.5	11	18.5/22	30/37	37/45

## TYPE

# OSSPM Series Stainless Steel Single Shaft Paddle Mixer



Rust-Resistant  
Stainless



Best Quality  
Material



Strong & Durable  
Constructions

\*High uniformity, the unique blade design enhances material flow, shear, mixing. Mixing uniformity is very good, CV <5%;

\*The gap between the blade and the chassis is adjustable, to ensure the residue rate is very low, and prevent cross-contamination of materials; the fully opened discharging door allows the material to be emptied instantly with no residue;

\*The discharging door is sealed by rubber air bag, to ensure that no leakage; special shaft end design ensures no leakage;

\*Convenient and speedy access door, designed for easy cleaning and maintenance, saving time.

Type	OSSPM0.2	OSSPM0.5	OSSPM1A	OSSPM2A	OSSPM4A	OSSPM7A
Power	4	7.5	11/15	18.5	37	55
Volume (m <sup>3</sup> )	0.2	0.5	1	2	4	6
Output (t/h)	100	250	500	1000	2000	3000
Time/batch (s)	60-180	60-180	60-180	60-180	60-180	60-180
Mixed Uniformity (%)	≥95	≥95	≥95	≥95	≥95	≥95

TYPE

# OPS Preserver



Rust-Resistant  
Stainless



Best Quality  
Material



Strong & Durable  
Constructions



- \*Make the feed easy to be pelletized and formed and the pulverization rate of pelletizing can be reduced;
- \*Improve the gelatinization of starch, increase the stability of aquatic feed in water;
- \*Improve the digestibility and absorption rate of feed, and increase the absorption rate of protein and starch by more than 10%~12% ;
- \*Destruction and elimination of harmful factor up to 30%~80% ;
- \*Reduce the power consumption; improve the pelletizer production capacity up to 7%~12%;Reduce the wear of ring die and roller; increase the life of vulnerable parts of pelletizer.

Type	OPS 630	OPS 800	OPS 900	OPS 1000	OPS 1200
Capacity (Kw)	4x12	5x18	6x20	10x15	12x30
Tube Diameter*	630x3000	800x3000	900x3500	1000x3500	1200x3400
Cylinder Length (m)					
Power (K/w)	4	5.5	7.5	7.5	7.5
Warranty Time (s)	60-3000	60-300	60-300	60-300	60.300

# TYPE

## OPM Pallet Machine



Rust-Resistant  
Stainless



Strong & Durable  
Constructions



Best Quality  
Material



\*Stainless steel feeder, imported inverter control, feeding evenly, correctly;

\*Stainless steel conditioner .it can keep steam contact with raw material completely big opening. window for checking and cleaning;

\*Double motor driven, high strength SPB belt, stable working, low noise;

\*The size confirmed by customer, it can produce different size of feed pellet it's easy to change ring die, it can save time and increase the efficiency.

Type	OPM25C	OPM32B	OPM35B	OPM40B	OPM45B
Main Power of Pellet Press (Kw)	22	22x2	30x2	45x2	55x2
Capacity (Kw)	1-2	2-5	3-7	4-10	5-15
Power of Feeder (Kw)	0.75	0.75	0.75	0.75	0.75
Power of Conditioner (Kw)	1.1	1.1	2	2	4
Ring Die Diameter (mm)	φ 250	φ320	φ350	φ400	φ450
Granule Size (mm)	φ 1.0-φ12	φ 1.0-φ12	φ 1.0-φ12	φ 1.0-φ12	φ 1.0-φ12

TYPE

# OGS Series Granulator

**ORISON**



Rust-Resistant  
Stainless



Strong & Durable  
Constructions



Best Quality  
Material



- \* Feeder, conditioner, and feeding chute are made of stainless steel, durable.
- \* The feeding system adopts electromagnetic speed control, which is convenient for speed adjustment and fully adapts to the capacity requirements of different materials.
- \* The host drive adopts high-precision gear drive, and the ring die adopts a hoop type, making it easy to disassemble.
- \* Equipped with strong magnetic safety magnets and overload protection and other safety device, it is safe and reliable;
- \* Compact structure, beautiful appearance, high yield, less consumption, easy to use and maintenance.

Type	OGS35	OGS42	OGS508
Main Engine Power (Kw)	55	110	132/160
Productivity (t/h)	2-5	3-12	5-20
Feeder Power (Kw)	1.5	1.5	1.5
Conditioner (Kw)	2.2	4	5.5
Ring Die Diameter (mm)	φ350	φ420	φ508
Granule Size (mm)	φ1.0 - φ12	φ1.0 - φ12	φ1.0 - φ12

# OPC Pellet Cooler



Rust-Resistant  
Stainless



Strong & Durable  
Constructions



Best Quality  
Material



\* Counterflow pellet cooler is the most advanced pellet feed cooling technology in the world, and the research and development of a new generation cooling equipment is mainly used for the cooling of high temperature pellets in feed production plant;

\* The pellet cooler has a unique mechanism of cooling, cooling air and high temperature and humidity material reverse motion, make the material gradually cool top bottom;

\* Avoids for quenching cracking caused by material surface, the moisture in the pellet core evaporates easily, cooling effect is superior to the existing domestic similar products;

\* After cooling of the material temperature is not higher than the outside temperature + 5°C, precipitation rate of not less than 3.8%, it plays a good role in the production high quality pellet feed.

Type	OPC56x36	OPC56x40	OPC66x60	OPC66x80	OPC56x100
Power (Kw)	22	37	55/75	90/110	132/160
Rotor Diameter (mm)	560	560	660	660	660
Spindle Speed (r/min)	2980	2980	2980	2980	2980
Mesh Size (mm)	3.0	3.0	3.0	3.0	3.0
Output (t/h)	3-5	5-8	9-16	12-22	18-28

## TYPE

# OPSC Series Plane Rotary Screen



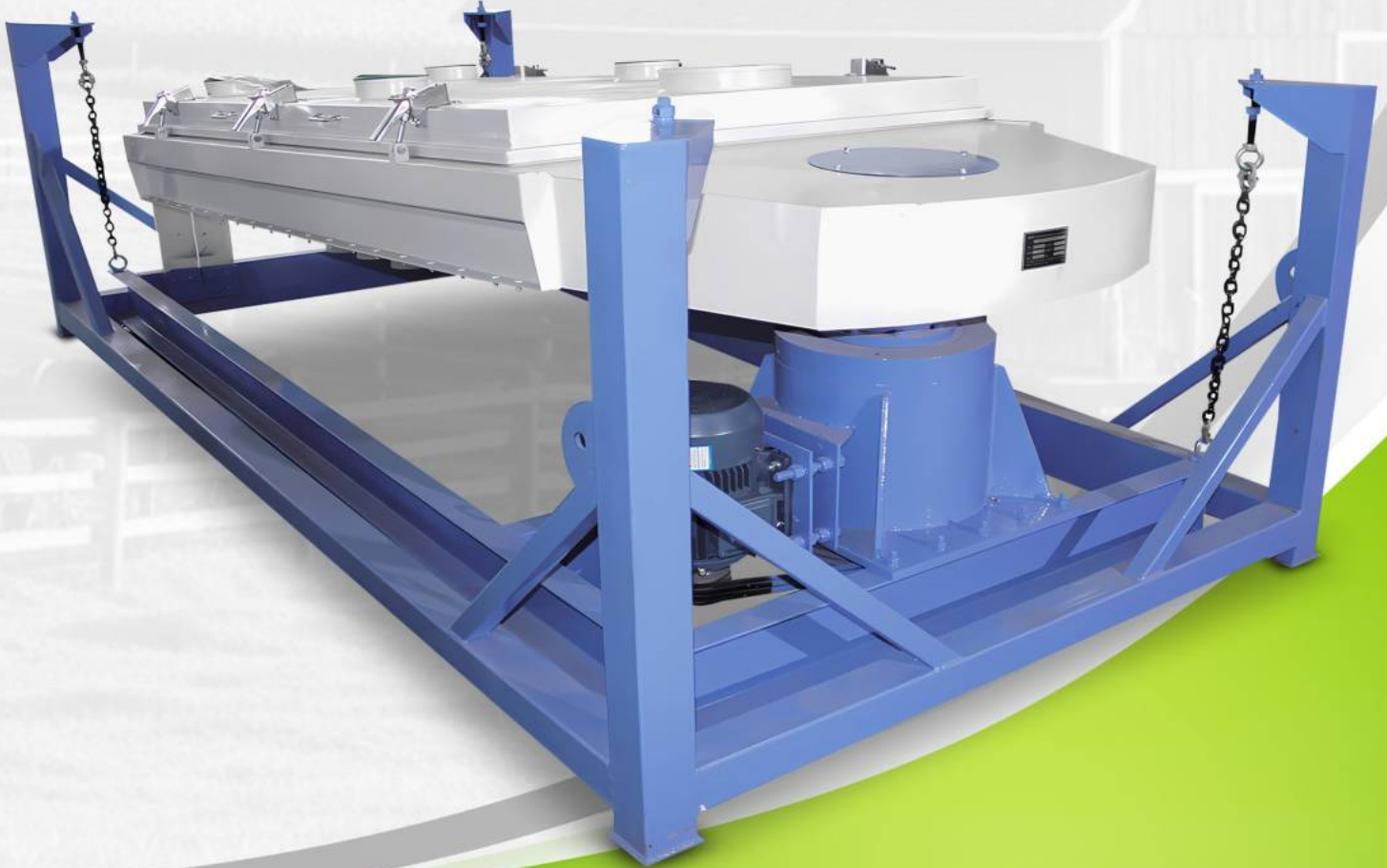
Rust-Resistant  
Stainless



Best Quality  
Material



Strong & Durable  
Constructions



- \* The drive device adopts belt drive, without oil lubrication, avoiding oil leakage.
- \* Special balance method, and small vibration, low noise. With adjustable amplitude, users can adjust the amplitude to best.
- \* The pressure screening mechanism is simple and convenient, and the screen can be quickly changed.
- \* High-strength heavy-duty screen boat, strong and durable.
- \* Internal streamlined design, no material deposition, no cross contamination;
- \* The tail elastic support effectively assists in balancing the vibrating screen body, reducing noise, improving the classification performance.
- \* Drive system and whole screen boat can be suspended on the prefabricated lifting hook of the building or suspended using a ground-mounted frame seat.
- \* Suitable for grading and secondary crushing process of granular materials, cleaning and grading treatment of some particles and powders.

Type	OPSC80x2	OPSC100x2	OPSC125x2	OPSC150x2
Output (t/h)	4-6	5.8	8-15	12-20
Power (Kw)	1.5	2.2	3	4

## TYPE

**ORISON**

### OPMC Series Permanent Magnet Cylinder



Rust-Resistant  
Stainless



Best Quality  
Material



Strong & Durable  
Constructions

\*Strong iron removal, magnetic field strength 2300, iron removal efficiency >99%.

\*No power required, comprehensive performance reaches the international advanced level.



## TYPE

### OBE Series Bucket Elevator

- \* The head pulley adopts refined rubber wheel, fire-proof, wear-resistant, effectively preventing belt slippage;
- \* Equipped with the stamping bucket;
- \* Equipped with a anti-reverse device, which can effectively prevent blockage caused by shutdown;
- \* The barrel adopts a special folding process, with high strength and good sealing;
- \* It adopts a strong scraper belt or polyester nylon scraper belt, with low elongation, durable and reliable;
- \* The machine base can be equipped with forward and reverse feeding hoppers to meet the different needs of users;
- \* The tensioning device adopts gravity tensioning or screw tensioning;
- \* Optional automatic deviation alarm and speed monitoring system;
- \* The bottom of the lower box is arc-shaped, with no residue users.



Rust-Resistant  
Stainless



Best Quality  
Material



Strong & Durable  
Constructions

## TYPE

**ORISON**

# OSPDC Series Square Pulse Dust Collector



Rust-Resistant  
Stainless



Strong & Durable  
Constructions



Best Quality  
Material



- \* This product is suitable for single or centralized suction dust removal and dust removal in the pneumatic conveying in the food and feed industries, also for dust recovery and dust collection in.
- \* With cloth bag and box-type structure, it has a compact structure, covers small footprint, and has high dust removal efficiency. Using special cloth to filter dust, with good dust removal effect.
- \* With a unique injection device, it can effectively blow away the dust adhering to the surface of the bag.



# OMPS Series Microcomputer Controlled Quantitative Packaging Scale



Rust-Resistant  
Stainless



Best Quality  
Material



Strong & Durable  
Constructions



- \* The unique anti-vibration device ensures the measurement accuracy, fast packing speed, and can work stably under complex working conditions;
- \* Adjust the machine externally with convenient maintenance;
- \* Key parts are imported, with long service life and strong anti-jamming ability;
- \* Modify the values in the drop at any time, and track the zero position automatically;
- \* The belt feeding scale is applicable to the packaging of powdery and granular materials, and the screw feeding scale is only applicable to the packaging of powdery materials.



## TYPE

### OPT Series Pneumatic TEE



## TYPE

### OPG Series Pneumatic Gate



- \* Cylinder interlock, which is convenient to operate and has high sensitivity:
- \* High-strength nylon roller, with small resistance:
- \* Ok New type sealing device, ensures no leakage:
- \* Suitable for controlling material flow in industries such as feed, flour, food, chemical, mining, metallurgy, and cement ;
- \* It can be driven by cylinder or manually, clean and hygienic:
- \* Good sealing, not easy to leak material.

Type	OPG25x25	OPG30x25	OPG40x40	OPT22x22	OPT25x25	OPT30x30
Size of Inlet and Outlet	250x250	300x300	400x400	220x220	250x250	300x300
Capacity (t/h)					40-100	



Rust-Resistant  
Stainless



Best Quality  
Material



Strong & Durable  
Constructions

## TYPE

# OLAE Series Liquid Adding Equipment



- \* Microcomputer automatic control, additive error <1%, automatic control of tank temperature and liquid level;
- \* The oil tank and pipeline can be equipped with automatic heating devices, and they have good anti-freezing effects, and are widely suitable for special additives in different regions and oil-materials;
- \* Equipped with high-efficiency mist sprayer, the addition of oil is more uniform;
- \* It can perform metering according to the user's choice of flowmeter or oil scale, which is convenient to operate and has strong controllability.

Type	OLAE50	OLAE100	OLAE200
Adding Precision (L/min)	50	100	200
Power (Kw)	1.5x2	2.2/4	4/7.5
Adding Pate (Kg/min)	≤0.2%	≤0.2%	≤0.2%



Rust-Resistant  
Stainless



Best Quality  
Material



Strong & Durable  
Constructions

## TYPE

**ORISON**

### OSC Series Screw Conveyor



Rust-Resistant  
Stainless



Strong & Durable  
Constructions



Best Quality  
Material



- \* This screw conveyor can feed and discharge at multiple points;
- \* Flexible process layout and low noise;
- \* Convenient operation and maintenance;
- \* It can be widely used in horizontal and inclined (the inclination angle is less than 15°) vertically transport all kinds of powdery, granular and small pieces of materials, such as bean meal, flour, bulk grain, etc.

## TYPE

### OBS Series Batching Scale

\*PLC series batching system is an intelligent computer batching system integrating control and management. It has superior performance, stability and reliability. It can be widely used for batching control in flour, feed, compound fertilizer, construction and other industries;

\*The product takes imported high-grade industrial computer as the batching host, which is combined with console, mimic panel and scale body to form a complete set of control system, and can flexibly form one machine and one scale, one machine and two scales, one machine and three scales and one machine and four scales according to needs;

\*This batching system can be connected with the system, record each batching information from time to time, and send the information to the manager.



Rust-Resistant  
Stainless



Best Quality  
Material



Strong & Durable  
Constructions

## TYPE

# OSC Series Screw Conveyor



Rust-Resistant  
Stainless



Best Quality  
Material



Strong & Durable  
Constructions

- \* Mechanical self-locking structure, accurate and reliable positioning of the guiding and feeding bend pipe. Automatically clean up dust in the machine, compact structure;
- \* Small footprint, easy maintenance;
- \* Widely used for material distribution at the top of various material bins.



## TYPE

# OSCU/OSCS Series Scraper Conveyor



Rust-Resistant  
Stainless



Best Quality  
Material



Strong & Durable  
Constructions



\*Used in food, warehouse, dock, food processing plants, light industry, pharmaceutical, brewing and other industries. It can convey all kinds of raw materials, semi-finished products of grain, feed, and other small granular or powder materials;

\*This machine has simple structure, small volume, sealed performance is good;

\* Rational structure, it uses the wheel steering mechanism, effectively reduce the noise and material breakage, prolongs the service life of the machine at the same time;

\* The machine can be started with load, and it has features of power saving, operation easy, maintenance convenient, etc.

## TYPE

# Hammer Mill



Rust  
Resistant



Strong & Durable  
Constructions



Best Quality  
Material



1. A crushing chamber to achieve real water drop, the unique way into the wind, to avoid the phenomenon of circulation during milling; grinding chamber set at the bottom "U" type hitting groove, significantly increase production; QSP fully open door operation, flexibility pressure screening mechanism for easy maintenance and replacement sieve.

2. Using high-quality bearings, ensure the life; nylon rod type coupling direct drive, large displacement compensation, effectively avoid bearing heating phenomenon.

3. Rotor passes accurate dynamic balancing test, to ensure a more stable operation, lower noise, better performance.

4. The top of the feed inlet of the pulverizer can be used with various forms of feeding mechanism matches.

5. By adjusting a coarse grinding, fine grinding, fine grinding, so that one machine.

6. For high quality poultry feed, aquatic feed, as well as alcohol plant, citric acid factory.

Model	OHM63x45		OHM63x655		OHM138x45		OHM138x65	
Power Distribution (Kw)	37	45	55	75	90	110	132	160
Feeding Motor Power (Kw)	0.75		1.5		1.5		1.5	
Capacity (t/h)	6.0	7.0	9.0	12	16	18	21	26

## TYPE

# Mixer

## OTPM Twin Shaft Paddle Mixer



Rust  
Resistant



Strong & Durable  
Constructions



Best Quality  
Material



1. Mixing speed, mixing short cycle, 30-90 seconds / batch; mixing high, CV <5%, and does not produce segregation.
2. A large open air discharge, the material quickly, low residue; balloon sealing strip, good sealing performance.
3. Set the return air duct, dust, no leaks, and fully meet the requirements of environmental protection.
4. Can be customized special atomizing spray system, add molasses, oil and other more uniform.
5. Widely used in feed, food, chemical, fertilizer and other industries in powder, granular, flake, block, such as material mixing.

Model	OTPM-0.5	OTPM-1	OTPM-2	OTPM-4	OTPM-7
Motor Power (Kw)	5.5	11	18.5	30	45
Coefficient of Variation %	≤5	≤5	≤5	≤5	≤5
Capacity (Kg/p)	250	500	1000	2000	3000

# Mixer

## OHDRM Series Horizontal Double Ribbon Mixer



Rust Resistant



Strong & Durable Constructions



Best Quality Material



1. Mixing time being 3-6 minutes; mixing uniformity Cvs7%

2. A pneumatic wide opening for discharging; few residues in the machine; and manual and pneumatic wide openings for discharging can be customize

3. Widely applied to compound feed mills, farm fertilizer, chemical, food, and flour industries

Model	OHDRM 0.12	OHDRM 0.2	OHDRM 0.5	OHDRM 1.0	OHDRM 2.5	OHDRM 5	HDRM 7.5	HDRM 10
Power (Kw)	0.75	2.2	3.0	7.5	15	30	45	55
Capacity (Kg/p)	50	100	250	500	1000	2000	3000	4000

## TYPE

**ORISON**

# Mixer

## ODM Drum Mixer



Rust  
Resistant



Strong & Durable  
Constructions



Best Quality  
Material



1. High mixing uniformity(CV<5%);mixing time being3-6 minutes.

2. No residues; good seal ability.

3. Widely applied to mixtures of powder sdditives and microelements in feed, chemical, pesticide, dye, medical and food industries.

Model	ODM 10	ODM 25	ODM 50	ODM 100	ODM 150	ODM 250
Power (Kw)	0.55	0.75	1.5	2.2	4.0	5.5
Capacity (Kg/p)	10	25	0.75	100	150	250

# TYPE



## Feed Pellet Machine



Rust Resistant



Strong & Durable Constructions



Best Quality Material



# OPM

## Series Pellet Mill

1. Stainless steel feeder imported inverter control, feeding evenly, correctly.
2. Stainless steel conditioner it can keep steam contact with raw material completely big opening. window for checking and cleaning.
3. Double motor driven, high strength SPB belt, stable working, low noise.
4. The size confirmed by customer.it can produce different size of feed pellet it's easy to change ring die, it can save time and increase the efficiency

Model	OPM25C	OPM32B	OPM35B	OPM40B	OPM45B
Main Motor Power (Kw)	22	37	30x2	45x2	55x2
Conditioning Motor Power (Kw)	1.1	2.2	2.2	4	4
Capacity (t/h)	1-2	2-5	3-7	4-10	6-15

## TYPE

**ORISON**

### Feed Pellet Machine



Rust  
Resistant



Strong & Durable  
Constructions



Best Quality  
Material



# OPM25C

1. Stainless steel feeder imported inverter control, feeding evenly, correctly.
2. Stainless steel conditioner it can keep steam contact with raw material completely big opening. window for checking and cleaning.
3. Double motor driven, high strength SPB belt, stable working, low noise.
4. The size confirmed by customer.it can produce different size of feed pellet it's easy to change ring die, it can save time and increase the efficiency

### SPECIFICATION

Model	Inner diameter of Die	Pellet Size	Main Motor Power	Feeding Motor Power	Conditioning Motor Power	Capacity
OPM25C	φ250 mm	φ1.5-8 mm	22 Kw	0.75 Kw	1.1 Kw	1-2 t/h

## TYPE

**ORISON**

### Feed Pellet Machine



Rust  
Resistant



Strong & Durable  
Constructions



Best Quality  
Material



# OPM32B

1. Stainless steel feeder imported inverter control, feeding evenly, correctly.
2. Stainless steel conditioner it can keep steam contact with raw material completely big opening. window for checking and cleaning.
3. Double motor driven, high strength SPB belt, stable working, low noise.
4. The size confirmed by customer.it can produce different size of feed pellet it's easy to change ring die, it can save time and increase the efficiency

### SPECIFICATION

Model	Inner diameter of Die	Pellet Size	Main Motor Power	Feeding Motor Power	Conditioning Motor Power	Capacity
OPM32B	Φ320 mm	Φ2-8 mm	37 Kw	0.75 Kw	2.2 Kw	2-5 t/h

## TYPE

**ORISON**

### Feed Pellet Machine



Rust  
Resistant



Strong & Durable  
Constructions



Best Quality  
Material



# OPM35B

1. Stainless steel feeder imported inverter control, feeding evenly, correctly.
2. Stainless steel conditioner it can keep steam contact with raw material completely big opening. window for checking and cleaning.
3. Double motor driven, high strength SPB belt, stable working, low noise.
4. The size confirmed by customer.it can produce different size of feed pellet it's easy to change ring die, it can save time and increase the efficiency

### SPECIFICATION

Model	Inner diameter of Die	Pellet Size	Main Motor Power	Feeding Motor Power	Conditioning Motor Power	Capacity
OPM35B	Φ350 mm	Φ2-8 mm	37 Kw x 2	0.75 Kw	2.2 Kw	3-7 t/h

## TYPE

**ORISON**

### Feed Pellet Machine



Rust  
Resistant



Strong & Durable  
Constructions



Best Quality  
Material



# OPM40B

1. Stainless steel feeder imported inverter control, feeding evenly, correctly.
2. Stainless steel conditioner it can keep steam contact with raw material completely big opening. window for checking and cleaning.
3. Double motor driven, high strength SPB belt, stable working, low noise.
4. The size confirmed by customer.it can produce different size of feed pellet it's easy to change ring die, it can save time and increase the efficiency

### SPECIFICATION

Model	Inner diameter of Die	Pellet Size	Main Motor Power	Feeding Motor Power	Conditioning Motor Power	Capacity
OPM40B	Φ400 mm	Φ2-8 mm	45 Kw x 2	1.5 Kw	4 Kw	4-10 t/h

# Feed Pellet Machine



Rust Resistant



Strong & Durable Constructions



Best Quality Material



## OPM45B

1. Stainless steel feeder imported inverter control, feeding evenly, correctly.
2. Stainless steel conditioner it can keep steam contact with raw material completely big opening. window for checking and cleaning.
3. Double motor driven, high strength SPB belt, stable working, low noise.
4. The size confirmed by customer.it can produce different size of feed pellet it's easy to change ring die, it can save time and increase the efficiency

### SPECIFICATION

Model	Inner diameter of Die	Pellet Size	Main Motor Power	Feeding Motor Power	Conditioning Motor Power	Capacity
OPM45B	Φ450 mm	Φ2-8 mm	55 Kw x 2	1.5 Kw	4 Kw	6-15 t/h

## Organic Fertilizer Pellet Machine



Rust Resistant



Strong & Durable Constructions



Best Quality Material



Organic fertilizer pellet machine is developed according to the market demand of the company a will after fermentation of animal waste and plant stalks kind of raw material and forming equipment, the animal product realization of harmless, into a good economic and environmental benefits.

Model	OOFPM25F	OOFPM32F	OOFPM35F	OOFPM40F	OOFPM45F
Power	22	37	30 x 2	45 x 2	55 x 2
Capacity (t/h)	0.8-1	1-2	2-3	3-4	4-5

## TYPE

**ORISON**

### Organic Fertilizer Pellet Machine



Rust  
Resistant



Strong & Durable  
Constructions



Best Quality  
Material



# OOFPM25F

Organic fertilizer pellet machine is developed according to the market demand of the company a will after fermentation of animal waste and plant stalks kind of raw material and forming equipment, the animal product realization of harmless, into a good economic and environmental benefits.

### SPECIFICATION

Model	Inner Diameter of Die	Pellet Size	Power	Capacity
OOFPM25F	250 mm	Φ2-8 mm	22 Kw	0.8-1 t/h

## TYPE

**ORISON**

### Organic Fertilizer Pellet Machine



Rust  
Resistant



Strong & Durable  
Constructions



Best Quality  
Material



# OOFPM32F

Organic fertilizer pellet machine is developed according to the market demand of the company a will after fermentation of animal waste and plant stalks kind of raw material and forming equipment, the animal product realization of harmless, into a good economic and environmental benefits.

### SPECIFICATION

Model	Inner Diameter of Die	Pellet Size	Power	Capacity
OOFPM32F	320 mm	Φ2-8 mm	37 Kw	1-2 t/h

## TYPE

**ORISON**

### Organic Fertilizer Pellet Machine



Rust Resistant



Strong & Durable Constructions



Best Quality Material



# OOFPM35F

Organic fertilizer pellet machine is developed according to the market demand of the company a will after fermentation of animal waste and plant stalks kind of raw material and forming equipment, the animal product realization of harmless, into a good economic and environmental benefits.

### SPECIFICATION

Model	Inner Diameter of Die	Pellet Size	Power	Capacity
OOFPM35F	350 mm	Φ2-8 mm	30kw x 2	2-3 t/h

## Feed Extruder



Rust Resistant



Best Quality Material



Strong & Durable Constructions



# OFE80-B

OFE feed extruder is single screw squeezing type extruding equipment, it is mainly used for feed extruding for livestock and poultry, pet and aquatics. It is dry type extruder, the main features are as below:

1. Suitable for different production requirements, small and middle sized feed factory can use it for material dealing and special feed production.
2. Suitable for different materials and production conditions.
3. Simple structure and practical, easy operation.

Model	OFE80-B
Capacity (t/h)	0.2-0.3
Main Power (kw)	22
Feeding Power (kw)	0.4
Screw Diameter	φ80
Cutting power (kw)	0.6
Packing Size	1800 x 1500 x 1000
Weight (kg)	790

## Feed Extruder



Rust Resistant



Best Quality Material



Strong & Durable Constructions

# OFE160-B

OFE feed extruder is single screw squeezing type extruding equipment, it is mainly used for feed extruding for livestock and poultry, pet and aquatics. It is dry type extruder, the main features are as below:

1. Suitable for different production requirements, small and middle sized feed factory can use it for material dealing and special feed production.
2. Suitable for different materials and production conditions.
3. Simple structure and practical, easy operation.

Model	OFE160-B
Capacity (t/h)	1.0-1.3
Main Power (kw)	90
Feeding Power (kw)	1.5
Screw Diameter	φ155
Cutting power (kw)	2.2
Packing Size	3100 x 2650 x 1800
Weight (kg)	3600

# Feed Extruder Line



## Grading And Screening Equipment



Rust Resistant



Strong & Durable Constructions



Best Quality Material



## OGSE Series

1. The circular, elliptical, linear combination weeks three movements, screening effect is good.
2. Screen ship is driven by belt transmission, eccentricity is adjustable, the tail is elastic support and little vibration, low noise.
3. Improving the structure of wire rope hanging avoid wire rope wear.
4. Use one or combination pressure screen, ensure the screen cover with lighter weight, good sealing.
5. Used in grain, the broken material classification and secondary loop grinding process, particle, powder and some cleaning and grading.

Model	OGSE80 x 2	OGSE100 x 2	OGSE130 x 2
Power (Kw)	2.2	2.2	3
Capacity (t/h)	4-10	6-12	12-18

## Pellet Packing Machine

This machine is dedicated for granular / Pellet quantitative packing application field. It uses a free dropping feed system, fast and precise valves make the material feeding process frequent and stable. Material directly goes into the bag, no jam, no sticking. Meantime, the easy-operation, easy-assembling, easy-maintenance and excellent stability are integrated into this machine.

Precision	+/-0.2%
Packing speed	100~200bags per hour
Weighing scale	10kg-50kg per bag
Power Supply	220Va.c and 4N-380Va.c
Power Dissipation	15kW
Compressed Air	0.4 MPa-0.6 MPa
Compressed Air Consume	0.5m <sup>3</sup> per hour



Rust Resistant



Strong & Durable Constructions



Best Quality Material



Precision	0.2 Grade
Packing speed	5-20bags per hour
Weighing scale	1000-1500kg
Power Supply	+/-0.2%
Power Dissipation	0.6 Mpa



Rust Resistant



Strong & Durable Constructions



Best Quality Material

# TYPE



## Complete Sets of Equipment

Simple design and structure including screw conveyor, mixer and pellet machine



### OPMS250

Main motor power	22KW
Capacity	600-1000 kg/h



Rust Resistant



Strong & Durable Constructions



Best Quality Material



## Complete Sets of Equipment

Simple design and structure including screw conveyor, mixer and pellet machine



Model	OFMP32D	OFMP35D	OFMP40D
Capacity	2-5 t/h	3.7 t/h	4-10 t/h
Total Power	About 120 Kw	About 150 Kw	About 200 Kw
Outline Size	9.5x7x12 m	9.5x7x12 m	10.5x7.5x13 m

## Premix Unit



1. Equipment with advanced water type pulverizer and efficient biaxial paddle mixer and filter.
2. Advanced technology, rational layout, steel structure quick installation.
3. Widely used in different kinds of feed factories and farms.
4. Can build a production line of an annual output of 5,000-300,000 tons.

# TYPE



## Auxiliary equipment

OHDC Series High Pressure Pulse Dust Collector



Rust Resistant



Best Quality Material



Strong & Durable Constructions



Model	Power (kw)	Capacity (t/h)
ODHC4	1.5	1200-1700
ODHC9	2.2	1900-2700
ODHC12	3.0	2100-3600
ODHC24	5.5	2780-6300
ODHC48	15	8400-12000

Our Series Include OHDC 4,9,12,24,48

## ORBC Series Removable Belt Conveyor



Model	ORBC50x2	ORBC50x7	ORBC50x10	ORBC50x12	ORBC50x15
Power (Kw)	2.2	2.2	3	4	4
Capacity (t/h)	75 m <sup>3</sup> /h(bulk) 720 bag/h (bagged)				

## Auxiliary equipment

### Splitter

Compact OSR series distributor structure, high positioning accuracy, speed and access to materials, stable and reliable, and can automatically clean up the dust inside the machine knot with preset positions, automatically display other characteristics, and easy operation and maintenance, is the ideal accessory feed industry equipment.



Model	Power (kw)	Capacity (t/h)
OSR4	0.55	30-50
OSR6	0.55	30-50
OSR8	0.55	30-50
OSR10	0.55	30-50
OSR12	0.55	30-50



Rust Resistant



Best Quality Material



Strong & Durable Constructions



## TUBULAR MAGNETIC

1. A whole stainless structure to remove iron greatly.
2. Magnetic strength 23000GS.
3. Deironization efficiency >299%;
4. No driving force is required; advanced comprehensive properties.



Rust Resistant



Best Quality Material



Strong & Durable Constructions

Model	OTM20	OTM25	OTM30	OTM40
Capacity (t/h)	20-30	30-50	30-80	80-100

## Auxiliary equipment

OCPS Series Cylinder Pre-clean sieve

1. Beautiful appearance, compact structure, convenient installation and maintenance;
2. Mainly applied to the preliminary cleaning of miscellaneous dirt in granular materials.

Model	Capacity (t/h)	Power (kw)
OCPS50	10-20	0.55
OCPS63	20-30	0.75
OCPS83	30-60	1.5



Rust Resistant



Best Quality Material



Strong & Durable Constructions



## OCSP Series Cone Sieve Powder

1. Beautiful appearance, compact structure, convenient installation and maintenance;
2. Mainly applied to the preliminary cleaning of miscellaneous dirt in granular materials.



Rust Resistant



Strong & Durable Constructions



Best Quality Material

Model	OCSP60x50x80	OCSP90x80x110
Power (kw)	5.5	11
Capacity (t/h)	8-15	15-20

## Auxiliary equipment

ODSF Series Double Screw Feeder

1. LARGE OUTPUT, LESS RESIDUE, FEED MORE EVENLY.
2. INLET USING A U-SHAPED OPENING, EQUAL PITCH.
3. INGREDIENTS FOR BATCHING SYSTEM POSITIONS IMPORTS.



Model	ODSF16	ODSF1620	ODSF25	ODSF32	ODSF40
Capacity (t/h)	10	18	30	55	70

## OSC Series Screw Conveyor



1. A widely used grain, feed industry standard materials handling equipment.
2. In the expected out additional suction outlet for conveying crushed materials, improve the mill production.
3. In the inlet using a U-shaped opening, adjustable or variable pitch, for feeding, so that the material feed evenly, batching system for feed ingredients warehouse.

Model	OSC16	OSC20	OSC25	OSC32	OSC40	OSC50
Capacity (t/h)	1-8	3-12	10-20	20-30	35-40	60-80

## Auxiliary equipment

### OBC Series Bucket Elevator

1. Head can cover rubber wheel, fire, wear, prevent belt slippage;
2. Assembly Vent effectively prevent dust explosions, safe and reliable;
3. Can be equipped with a non-return device, to prevent downtime caused by blocking material;
4. Widely used in a variety of vertical transport of materials, the power depend on the height



Model	Capacity (t/h)
OBC36/18	20-25
OBC36/23	25-30
OBC36/28	25-35
OBC48/28	30-40
OBC63/28	40-50

## ODC Series Drag Conveyor



1. High-strength tube sheet chain, quality wearable rail, smooth operation, low noise;
2. Can be multi-feed, but also multi-point discharge, process layout flexibility;
3. Applies to all types of silos, ports, food processing, feed processing industries granular, powdery material transport.

Model	ODC16	ODC20	ODC25	ODC32	ODC40
Capacity (t/h)	20-30	25-35	30-50	40-80	60-100

## Sawdust Die-Turned Pellet Mill

The OSDPM Sawdust Flat Die Pellet Mill as a latest model is specialized in processing various kinds of biomass raw materials. The driving gear is made of superior alloy steel. The gear surface is processed via carburizing and quenching also has been fine-ground. Consequently, it embraces the advantages of steady transmission, low noise, excellent loading capacity, slow temperature rise, long service life and good pressure tolerance.

### MOTOR-DRIVEN TYPE (MODEL B)



Rust Resistant



Strong & Durable Constructions



Best Quality Material



Type	Power (kw)	Output (kg/h)	Weight (kg)	Package size (mm)
OSDPM 150B	5.5	50-100	95/110	800x450x700
OSDPM 200B	7.5	80-120	200/230	1050x480x930
OSDPM 230B	11	120-200	290/320	1180x540x1000
OSDPM 260B	15	160-250	320/360	1240x540x950
OSDPM 300B	22	250-400	350/380	1300x560x1100

## Sawdust Die-Turned Pellet Mill

The OSDPM Sawdust Flat Die Pellet Mill as a latest model is specialized in processing various kinds of biomass raw materials. The driving gear is made of superior alloy steel. The gear surface is processed via carburizing and quenching also has been fine-ground. Consequently, it embraces the advantages of steady transmission, low noise, excellent loading capacity, slow temperature rise, long service life and good pressure tolerance.

### MOTOR-DRIVEN TYPE (MODEL C)



Rust Resistant



Strong & Durable Constructions



Best Quality Material



Type	Power (kw)	Output (kg/h)	Weight (kg)	Package size (mm)
OSDPM 150C	5.5	60-110	105/125	1000x480x780
OSDPM 200C	7.5	80-120	210/230	1050x550x830
OSDPM 230C	11	120-200	290/320	1200x560x950
OSDPM 260C	15	160-250	340/370	1240x580x1000
OSDPM 300C	22	250-400	425/465	1300x620x1100

## Sawdust Die-Turned Pellet Mill

The OSDPM Sawdust Flat Die Pellet Mill as a latest model is specialized in processing various kinds of biomass raw materials. The driving gear is made of superior alloy steel. The gear surface is processed via carburizing and quenching also has been fine-ground. Consequently, it embraces the advantages of steady transmission, low noise, excellent loading capacity, slow temperature rise, long service life and good pressure tolerance.

### DIESEL ENGINE-DRIVEN TYPE (MODEL A)



Rust Resistant



Strong & Durable Constructions



Best Quality Material



Type	Power (kw)	Output (kg/h)	Weight (kg)	Package size (mm)
OSDPM 150A	8	50-100	180/220	1000x500x750
OSDPM 200A	15	80-120	210/240	1460x750x900
OSDPM 230A	22	120-200	280/310	1560x850x1000
OSDPM 260A	33	160-250	330/360	1200x500x1070
OSDPM 300A	41	250-400	410/450	1220x600x1000

## Sawdust Die-Turned Pellet Mill

The OSDPM Sawdust Flat Die Pellet Mill as a latest model is specialized in processing various kinds of biomass raw materials. The driving gear is made of superior alloy steel. The gear surface is processed via carburizing and quenching also has been fine-ground. Consequently, it embraces the advantages of steady transmission, low noise, excellent loading capacity, slow temperature rise, long service life and good pressure tolerance.

### GASOLINE ENGINE-DRIVEN TYPE (MODEL Q)



Rust  
Resistant



Strong & Durable  
Constructions



Best Quality  
Material



Type	Power (kw)	Output (kg/h)	Weight (kg)	Package size (mm)
OSDPM 150150Q	10	50-100	180/220	1000x500x750

## Sawdust Die-Turned Pellet Mill

The OSDPM Sawdust Flat Die Pellet Mill as a latest model is specialized in processing various kinds of biomass raw materials. The driving gear is made of superior alloy steel. The gear surface is processed via carburizing and quenching also has been fine-ground. Consequently, it embraces the advantages of steady transmission, low noise, excellent loading capacity, slow temperature rise, long service life and good pressure tolerance.

### PTO TYPE (MODEL P)



Rust  
Resistant



Strong & Durable  
Constructions



Best Quality  
Material



Type	Power (kw)	Output (kg/h)	Weight (kg)	Package size (mm)
OSDPM 150P	≥8	50-100	90/110	900x540x1020
OSDPM 200P	≥15	80-120	130/150	1000x540x1020
OSDPM 230P	≥22	120-200	175/200	1000x540x1020
OSDPM 260P	≥33	160-250	235/255	1050x540x900
OSDPM 300P	≥41	250-400	305/325	1100x540x1000

## Sawdust Roller-Turned Pellet Mill

The OSRPM Roller-Turned Pellet Mill is professionally developed to process such biomass material as sawdust, straw, rice husk, bamboo sawdust, peanut shell, bagasse and alfalfa, etc. The die compression ratio can be selected as per the specific material. Die service life can be prolonged if both sides of the die are used. The all-steel structure and the superior reducer inside can manufacture a variety of materials and will exert a better pelletization effect with lower noise during operation.

### MOTOR-DRIVEN TYPE (MODEL B)



Rust  
Resistant



Strong & Durable  
Constructions



Best Quality  
Material



Type	Power (kw)	Output (kg/h)	Weight (kg)	Package size (mm)
OSRPM 200B	7.5	80-120	215/245	950x450x1050
OSRPM 300B	22	250-350	540/575	1350x750x1400
OSRPM 400B	30	350-450	770/810	1400x800x1450
OSRPM 420B	37+ 0.37	400-600	1050/1100	1680x650x1500 550x450x1100

## Sawdust Roller-Turned Pellet Mill

The OSRPM Roller-Turned Pellet Mill is professionally developed to process such biomass material as sawdust, straw, rice husk, bamboo sawdust, peanut shell, bagasse and alfalfa, etc. The die compression ratio can be selected as per the specific material. Die service life can be prolonged if both sides of the die are used. The all-steel structure and the superior reducer inside can manufacture a variety of materials and will exert a better pelletization effect with lower noise during operation.

### DIESEL ENGINE-DRIVEN TYPE (MODEL A)



Rust Resistant



Strong & Durable Constructions



Best Quality Material



Type	Power (kw)	Output (kg/h)	Weight (kg)	Package size (mm)
OSRPM 200A	15	80-120	320/350	1460x950x1100
OSRPM 300A	41	250-350	850/890	2480x700x1100
OSRPM 400A	55	350-450	1010/1050	2600x800x1300
OSRPM 420A	62	400-600	1200/1250	2640x700x1500

## Plastic Processing Pellet Mill

Based on biomass pelletization principles, the newly-developed plastic processing pellet mill OPPPM300B is designed according to the plastic (aluminium-plastic panel stuffing) physical characteristics of adsorb ability and being fusible by heat. Enjoying the edges of easy-to-handle, high yield and low cost, it really is an optimized combination of all strong points from both roller-turned pellet mill and die-turned pellet mill.



Rust  
Resistant



Strong & Durable  
Constructions



Best Quality  
Material



Type	Power (kw)	Output (kg/h)	Weight (kg)	Package size (mm)
OPPPM300B	Three phase22	600-800	305/325	1350x560x1130

## Hammer Mill

As one of the state of the art designs, hammer mill OHM is suitable for processing fodder for the fields of agriculture, stock raising, fishery and for biomass industry to pelletize such materials as straw, corn stalk, peanut shell, weed and tree branches and twigs, etc. Material after conveyed into the crushing chamber will be pulverized by the swiftly rotating hammer plates. Then smashed pieces will be tossed out of the machine via centrifugal force from the rotor and suction force from the fan. Particles failing to pass through the sieve meshes will be re-pulverized as same as the process above.

### MOTOR-DRIVEN TYPE



Rust Resistant



Strong & Durable Constructions



Best Quality Material



Type	Power (kw)	Output (kg/h)	Weight (kg)	Package size (mm)
OHM158	Single Phase 1.5	60-120	75/95	620x490x620
OHM198	Single Phase / 3Phase	120-150	120/135	1000x750x120
OHM420	Three Phase 7.5	250-500	250/270	1200x1000x1220
OHM420	Three Phase 11	250-700	300/320	1200x1000x1220
OHM500	Three Phase 22	800-1000	710/755	2000x900x1700
OHM500	Three Phase 30	800-1300	785/830	2000x900x1700

## Hammer Mill

As one of the state of the art designs, hammer mill OHM is suitable for processing fodder for the fields of agriculture, stock raising, fishery and for biomass industry to pelletize such materials as straw, corn stalk, peanut shell, weed and tree branches and twigs, etc. Material after conveyed into the crushing chamber will be pulverized by the swiftly rotating hammer plates. Then smashed pieces will be tossed out of the machine via centrifugal force from the rotor and suction force from the fan. Particles failing to pass through the sieve meshes will be re-pulverized as same as the process above.

### DIESEL-DRIVEN TYPE



Rust Resistant



Strong & Durable Constructions



Best Quality Material



Type	Power (kw)	Output (kg/h)	Weight (kg)	Package size (mm)
OHM420	15	250-500	370/390	1650x800x1120
OHM420	22	250-700	390/410	1650x800x1120
OHM500	55	800-1100	Cyclone: 125/145 Hammer Mill: 310/330 Diesel Engine: 560/590	2700x900x1700 1150x800x1270 1500x1050x1320

## Airflow Dryer

The dryer is used to decrease the moisture content of biomass raw material in complete pellets production. For small pellet plant (50-800kg/h), we usually suggest airflow dryer. If your raw material has moisture higher than 12%, it is advised to choose a dryer together with the pellet machine.



### OAD-DL series drying system for low moisture content of 20-25%

Model	OAD-DL-4	OAD-DL-7.5	OAD-QL-11	OAD-QL-15
Capacity (Kg/hour)	200 - 250KG	400 - 500KG	500 - 700KG	800 - 1000KG
Size of Input Material (Diameter)	<3mm & <5mm	<3mm & <5mm	<3mm & <5mm	<3mm & <5mm
Temperature of Hot Air	150°C~220°C	185°C~220°C	150°C~220°C	150°C~220°C
Consumption of Wood Waste for heating the dryer	50 - 65 kg/h	60 - 75kg/h	65 - 90kg/h	100 - 120kg/h
Power (Centrifugal Fan)	4kw	7.5kw	11kw	15kw
Power (Centrifugal Fan)	1760kg	2100kg	2400kg	2600kg
Net/Gross Weight	9×2×3.3m	13×2×3.3m	16×2×3.3m	17×2×3.3m
Dimension (m)	200 - 250KG	400 - 500KG	500 - 700KG	800 - 1000KG

### OAD-DH series drying machine for high moisture content of 30-50%

Model	OAD-DH-5.5	OAD-DH-7.5	OAD-DH-11	OAD-DH-15	OAD-DH-18.5
Capacity (Kg/hour) (Kg)	250 - 350	300 - 400	600-800	800-1000	1000-1200
Power (Centrifugal Fan) (kw)	5.5	7.5	11	15	18.5
Feeding power (kw)	1.5	1.5	1.5	1.5	1.5
Weight (kg)	2200	2500	3000	3500	4000
Pipe minimum diameter (mm)	260	300	350	400	450
Water content	30% -40%	30%-40%	30%-40%	30%-40%	30%-40%

## OBMPP 300 Biomass Mobile Pellet Plant

This OBMPP 300 small moveable multifunctional complete pellet plant is specially designed for pellet production. With the delicate structure design, the necessary processing equipment are arranged in one piece of complete plant, primarily consisting of hammer mill, cyclone separator, bin, screw conveyor, pellet mill, vibrating screen, scraper conveyor, electric cabinet, and foundation frame. The pellet plant integrates the processing functions of crushing, pelletizing, cooling, transporting, etc into one complete plant, improving working efficiency remarkably and lowering your pellets production costs. One operator can manage the operation of this whole plant by simple adjusting the operation buttons, lowering your labor cost efficiently.

Patented pelletizing technology guarantees a flexible applicability, satisfying customers with different requirements.

Based on experienced practice in biofuel industry and customers' feedbacks and requirements, our MPL300 mobile pellet pant is designed with the advanced technology from abroad, beaming the charms of Europe and America style. The plant is widely used to produce feed pellets and wood fuel pellets. And it is consisted of hammer mill, mixing silo, pellet mill, cooler and other multifunctional machines, with appealing appearance satisfying various tastes and requirements from different customers.

**Wide Application Range:** Any kind of biomass materials includes wood fiber, such as peanut shell, bagasse, castor shell, straw, sawdust, coffee grounds, rice husk, sunflower shell, cotton stalk, tobacco residue, leaf mustard stalk, bamboo, jute residue, tea residue, wheat-straw, palm shell, bean shell, coconut shell, dregs of decoction, and wood waste, etc.

**Applicability:** This mobile plant is flexible so that it's convenient to move the plant out. And due to the delicate design, the volume of the multifunctional plant is small and favorable for transportation.

The final pellets are widely used in heating and electricity industries as biofuel. Also, the feedstuff pellets can be used as the foods for cow, sheep, rabbits and other poultry.

**Performance of the Mobile Line:** The mobile pellet plant with multifunction is consisted of the systems of crushing, separating, air feeding, mixing, moisture adjusting, pelletizing, sieving, cooling, conveying and packaging, etc. And also the frequency conversion technology is adopted to adjust the main parts. The whole working flowchart is reasonable.

All of the electrical parts used are from the Schneider, so they are reliable. To ensure continuous production, the frequency conversion motors are installed in the feeder and screw conveyor to adjust the feeding speed.



Rust Resistant



Best Quality Material



Strong & Durable Constructions

Type	Power (Hp)	Output (kg/h)	Weight (kg)	Package size (mm)
Feed pellet (2.5mm-8mm)				
OBMPP300D	41.44	500-700	2300	3500x1960x3500
Wood pellet (6mm-10mm)				
OBMPP300R	41.44	250-350	2300	3500x1960x3500
OBMPP400R	49.44	350-450	2400	3500x1960x3500
OBMPP420R	56.81	400-600	2500	3500x1960x3500

## 200-500kg/h Small Pellet Plant

The 200-500kg/h wood pellet plant is a small scale wood pellet plant, which is suitable for small farms or people who want to enter the pellet production field. It is in fact not complex. The wood pellet plant can process not only wood chip, wood shaving, sawdust, but also agricultural waste and straw, stalk, grass, alfalfa, etc.

The working process of small pellet plant  
Wood raw material processing (chipping, crushing)—drying—pelletizing—cooling—packing and storage.

What equipment does small pellet plant include?  
Crusher, Dryer, Conveyor, Small pellet mill (electric, diesel), Cooler, etc.



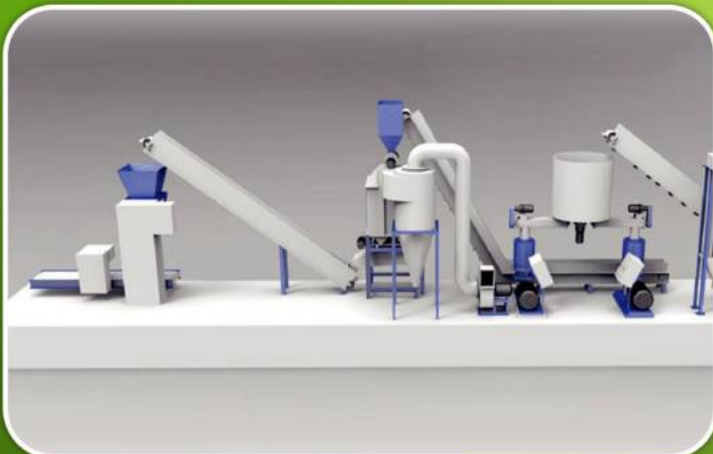
Rust Resistant



Strong & Durable Constructions



Best Quality Material



# TYPE



## Biomass Pellet Mill

### OBPM25

This is the smallest ring die pellet mill to process biomass materials. If you want to start a small pellet making business, this is good choice. This mill uses only 22KW of 3 phase electric power which makes it very economical to use. There are also two small motors for screw feeder and force feeding.



Rust Resistant



Strong & Durable Constructions



Best Quality Material

Model	OBPM25
Capacity (kg/h)	200-250kg/h
Power (kw)	22+0.75+0.37kw
Dimension (mm)	1700*1200*1000mm
Weight (kg)	800kg



### OBPM35

This is the pellet mill with double belt driven structures. The working principle is the biomass material enters the pellet chamber through the forced feeder. Because of high speed rotation of die, the materials are driven to the section between die and roller. Then under the forceful extrusion, the biomass material is extruded into solid and takes shape in the die hole.



Rust Resistant



Strong & Durable Constructions



Best Quality Material

Model	OBPM35
Capacity (kg/h)	500-800kg/h
Power (kw)	30*2+0.75+0.75kw
Dimension (mm)	2150*1950*1900mm
Weight (kg)	2200kg



**Biomass Pellet Mill**

**OBPM42 & OBPM508**

The machine adopts aerodynamics technology & the current round principle, which is used to reduce the temperature in pelletizing chamber to around 90°C. Then it can increase the lifetime of the ring die. This series of pellet mill uses direct gear driven structures, all transmission gears are treated by surface quenched hardening tech and processed by accurate milling machines, to ensure the high concentricity with the main shaft. Above advantages guarantee high performance and capacity which is much better and higher than the belt driven models.



Rust Resistant



Strong & Durable Constructions



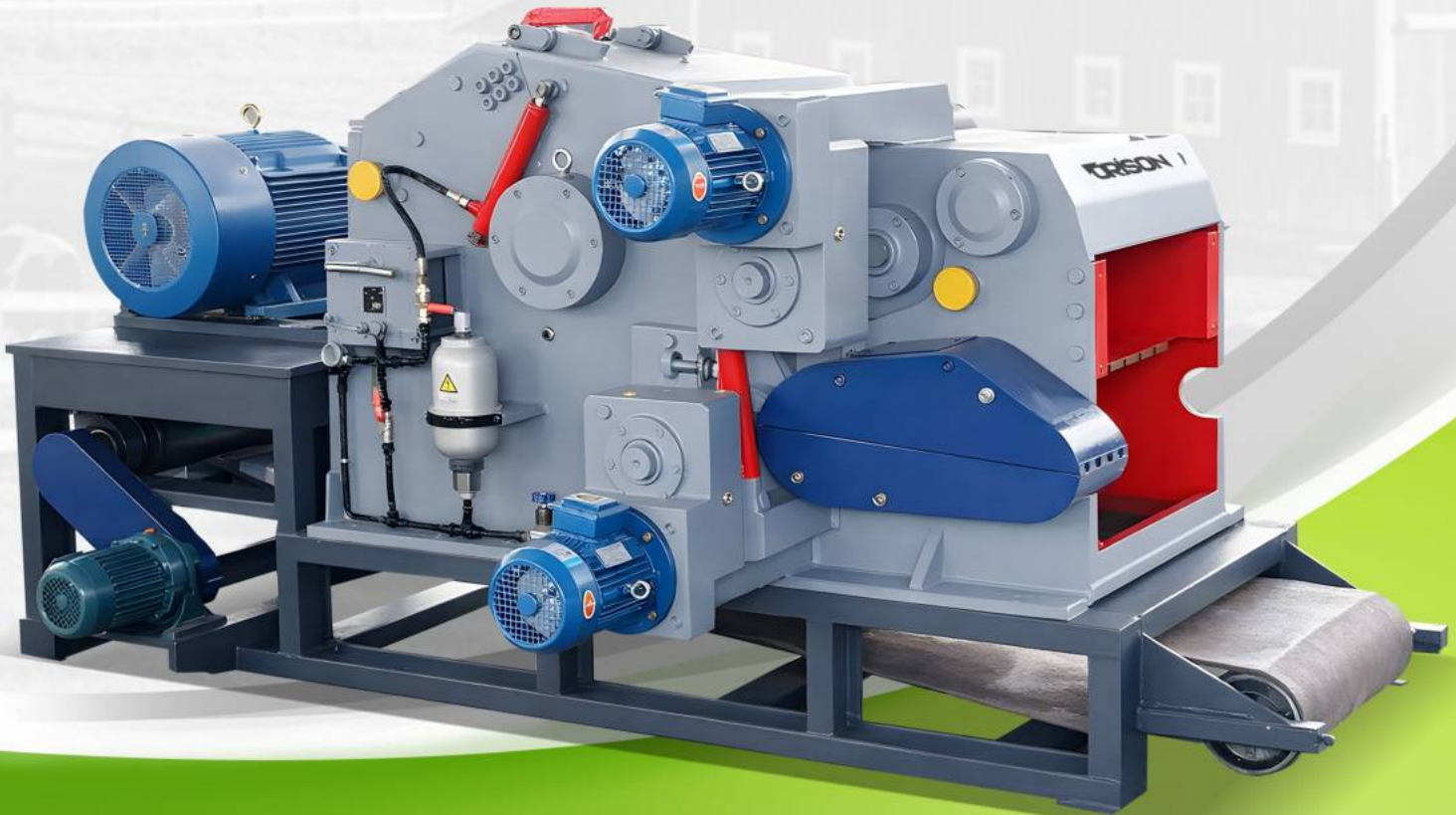
Best Quality Material



Model	Capacity (kg/h)	Power (kw)	Dimension (mm)	Weight (kg)
OBPM42	1000-1500kg/h	90+1.5+3kw	2600*1000*2000mm	3400kg
OBPM508	1500-2000kg/h	132+1.5+3kw	2990*1200*2410mm	4500kg

## Wood Chipper

Drum chipper is a special equipment for wood chip production, it is widely used in the wood based particleboard, fiberboard, paper & pulp industries and wood chip production bases for stock preparation. Small-scale drum chipper is also ideal for material preparation in laboratory. With this machine, small diameter tree, log and woodworking residues (slab, lath, wood core and waste veneer), even non-wood fiber stems (jute, reed, bamboo) can be cut into uniform chips (the size and thickness of the chips will be adjusted according to client's demands or material conditions).



Model and specification	OWC216	OWC218	OWC2113
Knife rotor diameter	650mm	800mm	1300
Capacity	10 m <sup>3</sup> /h	15m <sup>3</sup> /h	108m <sup>3</sup> /h
Max size of feeding wood log	120-160	160-200mm	230-250mm
Feed opening (H×W)	2/3pcs	225×680mm	400×1050mm
Qty of rotor knives	37m/min	2/3pcs	2/3pcs
Feeding Speed	55Kw	37m/min	43m/min
Main Motor	3×2kw	110Kw	315Kw
Feed roller motor	22-30mm	3×2kw	11×2kw
Chip length (theoretically)	4070kg	22-30mm	30mm
Weight (kg)	OWC216	7000kg	15000kg

## Hammer mill

This series of hammer mill can crush various raw materials (after coarse grinding), which is an indispensable equipment in pretreatment section in pellet plant.

This series crusher adopt steel plate weld structure, motor and crusher are installed in same pedestal. Adopting pin coupling direct-connection, rotor is checked by dynamic balance, which also can run reversely. Process gate has safety and interlock device so as to prevent opening process gate while rotor is running. Inlet is on top of crusher. It can match variety of feeding mechanism, hammer is symmetrical arranged.



Rust Resistant



Strong & Durable Constructions



Best Quality Material



Model and specification	OHM80×45	OHM80×60	OHM80×80	OHM80×100
Rotor diameter (mm)	800	800	800	800
Width of crushing chamber (mm)	450	600	800	1000
Main shaft speed (rpm)	1500	1500	1500	1500
Hammer linear speed (m/s)	110	110	110	110
Hammer quantity's size	48	64	84	116
Equipped power (kw)	22-30	30-37	45-55	75-110

## Drum Dryer

It consists of feeding system, main body, Ducting System and Collector System. It need to match with stove. Smoke and air with high temperature produced by the stove are the heat source medium. When material enters the drum through the feeder, heat exchange takes place between the materials and the continuous hot air flow. Material will move along the bent plat on the wall of the drum by the effect of rolling and introduced air, which is called the concurrent flow drying technology.



Model	φ1.2×10m	φ1.5×11m	φ1.8×11m	φ1.8×14m	φ2.0×15m
Air fan power	22kw	30kw	45kw	45kw	45kw
Inner diameter	1200mm	1500mm	1800mm	1800mm	2000mm
Length	10m	11m	11m	14m	15m
Temperature of inlet air	180-350°C	180-350°C	180-350°C	180-350°C	180-350°C
Temperature of outlet air	90-100°C	90-100°C	90-100°C	90-100°C	90-100°C



Rust Resistant



Strong & Durable Constructions



Best Quality Material

# TYPE

## Counterflow Cooler



Rust Resistant



Best Quality Material



Strong & Durable Constructions

The ambient cooling-air flows vertically through the discharge mechanism and the layer of pellets. If retention time and cooling air-flow setting are optimal, the temperature of the outlet pellets is 2-5C higher than the ambient temperature. The complete cooling system includes cooler, cyclone, air lock, and cooling fan.

Model	OCC11x11	OCC14x14	OCC16x16	OCC18x18
Capacity (feed)	1-2t/h	3-5t/h	5-7t/h	10t/h
Main power (kw)	0.55	0.75	1.5	1.5kw
Cooling time	10-15 minutes	10-15 minutes	10-15 minutes	10-15 minutes
Moisture reducing (%)	≥3.5	≥3.5	≥3.5	≥3.5
Volume	1.1m <sup>3</sup>	2.25 m <sup>3</sup>	4m <sup>3</sup>	6m <sup>3</sup>

# Biomass Pellet Line

Corn stalk    Bagasse    Grass    EFB    Sawdust    Wood chips    Polishing powder    Wastes



## 3D Flow Chart of Complete Biomass Pellet Plant



Heating fuel    Cooking fuel    Generating fuel    Animal fodder    Cat litter    Organic fertilizer



Pellet Sales



Heating fuel    Pellets    Generating fuel    Animal fodder    Cat litter    Organic fertilizer



## TYPE

### Fodder Pellet Mill

**ORISON**

#### MOTOR-DRIVEN TYPE (MODEL B)



The OFPM Forage Flat Die Pellet Mill, which adopts the international advanced technology, boasts a new designed model by ORISON possessing advantages of low cost, convenient operation and maintenance as well as high yield, etc. According to clients' requirements, many kinds of pellets can be manufactured via different models of pore diameter; and feed pellets for live stock will be produced through both different compression ratios and raw material properties.



Rust Resistant



Strong & Durable Constructions



Best Quality Material

Type	Power (kw)	Output (kg/h)	Weight (kg)	Package size (mm)
OFPM 120B	Three phase 3/single phase 2.2	60-100	80-100	750x320x680
OFPM 150B	4	90-120	95/110	800x450x700
OFPM 200B	7.5	200-300	200/230	1050x480x930
OFPM 230B	11	300-400	290/320	1180x540x930
OFPM 260B	15	400-600	320/360	1240x540x950
OFPM 300B	22	600-800	350/380	1300x560x1100
OFPM 400B	30	800-1100	700/740	1600x640x1300

## TYPE

### Fodder Pellet Mill

#### MOTOR-DRIVEN TYPE (MODEL C)



The OFPM Forage Flat Die Pellet Mill, which adopts the international advanced technology, boasts a new designed model by ORISON possessing advantages of low cost, convenient operation and maintenance as well as high yield, etc. According to clients' requirements, many kinds of pellets can be manufactured via different models of pore diameter; and feed pellets for live stock will be produced through both different compression ratios and raw material properties.



Rust Resistant



Strong & Durable Constructions



Best Quality Material

Type	Power (kw)	Output (kg/h)	Weight (kg)	Package size (mm)
OFPM 150C	5.5	90-120	105/125	1000x480x780
OFPM 200C	7.5	200-300	210/230	1050x550x830
OFPM 230C	11	300-400	290/320	1200x560x950
OFPM 260C	15	400-600	340/370	1240x580x1000
OFPM 300C	22	600-800	425/465	1300x620x1100
OFPM 400C	30	800-1100	700/740	1600x600x1300

## TYPE

### Fodder Pellet Mill

**ORISON**

#### DIESEL ENGINE-DRIVEN TYPE (MODEL A)



Rust Resistant



Strong & Durable Constructions



Best Quality Material

The OFPM Forage Flat Die Pellet Mill, which adopts the international advanced technology, boasts a new designed model by ORISON possessing advantages of low cost, convenient operation and maintenance as well as high yield, etc. According to clients' requirements, many kinds of pellets can be manufactured via different models of pore diameter; and feed pellets for live stock will be produced through both different compression ratios and raw material properties.

Type	Power (kw)	Output (kg/h)	Weight (kg)	Package size (mm)
OFPM 120A	8	60-100	120/140	900x500x730
OFPM 150A	8	90-120	180/220	1000x500x750
OFPM 200A	15	200-300	210/240	1460x750x900
OFPM 230A	22	300-400	280/310	1560x850x1000
OFPM 260A	33	400-600	330/360	1200x500x1070
OFPM 300A	41	600-800	410/450	1220x600x1000
OFPM 400A	55	800-1100	920/960	2050x800x1300

## TYPE

### Fodder Pellet Mill

#### GASOLINE ENGINE-DRIVEN TYPE (MODEL Q)



The OFPM Forage Flat Die Pellet Mill, which adopts the international advanced technology, boasts a new designed model by ORISON possessing advantages of low cost, convenient operation and maintenance as well as high yield, etc. According to clients' requirements, many kinds of pellets can be manufactured via different models of pore diameter; and feed pellets for live stock will be produced through both different compression ratios and raw material properties.

Type	Power (kw)	Output (kg/h)	Weight (kg)	Package size (mm)
OFPM 120Q	7.5	60-100	120/140	900x500x730
OFPM 150Q	10	90-120	180/220	1000x500x750



Rust Resistant



Strong & Durable Constructions



Best Quality Material

## TYPE

### Fodder Pellet Mill

#### PTO TYPE (MODEL P)



The OFPM Forage Flat Die Pellet Mill, which adopts the international advanced technology, boasts a new designed model by ORISON possessing advantages of low cost, convenient operation and maintenance as well as high yield, etc. According to clients' requirements, many kinds of pellets can be manufactured via different models of pore diameter; and feed pellets for live stock will be produced through both different compression ratios and raw material properties.



Rust Resistant



Strong & Durable Constructions



Best Quality Material

Type	Power (kw)	Output (kg/h)	Weight (kg)	Package size (mm)
OFPM 120P	≥8	60-100	80/100	900x540x900
OFPM 150P	≥8	90-120	90/110	900x540x1020
OFPM 200P	≥15	200-300	130/150	1000x540x1020
OFPM 230P	≥22	300-400	170/200	1000x540x1020
OFPM 260P	≥33	400-600	235/255	1050x540x900
OFPM 300P	≥41	600-800	305/325	1100x540x1000
OFPM 400P	≥55	800-1100	450/470	1310x900x1500

## OFPL 300 / OFPL 400 feed pellet line

OFPL 300 / OFPL 400 feed pellet line includes grinding machine, mixing machine, screw conveyor, silo, pellet mill, pellet cooler. This feed pellet line can produce 2-8mm of feed pellets with 600-1000kg/h pellet output capacity. The pellets are suitable for feeding pig, cattle, sheep, rabbit, chicken, duck, geese, fish and other animals.



Rust Resistant



Strong & Durable Constructions



Best Quality Material



Type	Power (kw)	Output (kg/h)	Weight (kg)	Package size (mm)
OFPL300	45.7	600-800	2464	15000x4000x4500
OFPL400	61.2	800-1000	2902	15000x4000x4500



Corn



Pellets



## Ring Die Pellet Mill For Feeds



Rust Resistant



Strong & Durable Constructions



Best Quality Material



Ring die Pellet Mill is the main machine for producing feed pellet and applicable to medium and large sizes feed pellet plant. Our feed pellet mill is designed for different usages, the structure is different. Granulation of material such as various feeds tufts for livestock, poultry and aquatic products, grass meal, organic fertilizer, etc. Dies with various hole diameters such as  $\varphi 2$ ,  $\varphi 3$ ,  $\varphi 4$ ,  $\varphi 4.5$ ,  $\varphi 5$ ,  $\varphi 6$ ,  $\varphi 8$ ,  $\varphi 10$  are available for this machine. Dies with different hole diameters can be made to order for users and users can choose randomly according to their different

**Function:** make feeds for animals such as chicken, cattle, pig, sheep etc, from raw materials like sorghum, maize, soya expeller, rice and wheat etc.

**Main Structure:** This ring die feed pellet machine is mainly consisted of feeding device (screw feeder), hardening and tempering device (conditioner), face plate, press chamber transmission system, overload protection and electrical control system

Model	ORPMF25	ORPMF35	ORPMF42	ORPMF520
Capacity	1.0-2.0t/h	3.0-5.0t/h	6.0-10.0t/h	8.0-15t/h
Main motor power	11kw*2	30kw*2	55kw*2	75kw*2
Feeding motor power	0.75kw	0.75kw	0.75kw	0.75kw
Conditioner motor power	2.2kw	2.2kw	5.5kw	5.5kw
Diameter of ring die	250	350	420	520
Diameter of final wood pellt	2-10	2-10	2-10	2-10

## Feed Pellet Line

Pelleting is a key to the production of high quality nutritional feeds as they ensure that the feed formulation is in the correct quantities for all animals that eat them. Each bite of a pellet will have the same designed formulation ensuring all the stock are feed as intended.



## Feed Mash Line

Feed mash line always adopts Paddle mixer, ribbon mixer or feed mixer, batch bins. The chain driving rigidity and design ensure long time operation without trouble. Feed mixer is widely used in compound feed plant, premix feed plant, feed machinery, additives, food and flour plants, etc with the advantages of gentle mixing, no deviation, high mixing homogeneity, beautiful shape, low noise, no dust and environmental protection.



# INDOTARA®

## PT. INDOTARA PERSADA

### Our Marketing Office and After Sales Service Center

#### Head Office

50/F, Menara BCA Grand Indonesia  
Jl. M.H. Thamrin No.1  
Jakarta Pusat 10310  
021 - 5011 2224  
dfe@indotara.id



#### Semarang Office

Wisma HSBC Lt. 6 suite 609  
JL. Gajah Mada No.135,  
Semarang, Jawa Tengah - 50134  
024 - 40 300 889  
smg.dfe@indotara.id



#### Marketing Office

Maggiore Business Loft No. 01-02  
Gading Serpong,  
Tangerang - Banten 15332  
021 - 5011 2224  
dfe@indotara.id



#### Medan Office

Sutomo Tower Lantai 5H  
JL. Sutomo Ujung No.28,  
Kota Medan, Sumatera Utara 20235  
061 - 50 300 592  
mdn.dfe@indotara.id



#### Graha Indotara

Millenium Industrial Estate  
JL. Millenium 22 Blok R3 No. 1,  
Cikupa, Tangerang - Banten 15720  
021 - 5011 2224  
dfe@indotara.id



#### Makassar Office

Fajar Graha Pena Lt. 5  
JL. Urip Sumoharjo No. 20,  
Makassar - Sulawesi Selatan 90234  
021 - 5011 2224  
mks.dfe@indotara.id



#### Bandung Office

Wisma HSBC Lt. 6 Suite B  
Jalan Asia Afrika No.116,  
Kota Bandung, Jawa Barat 40112  
021 - 5011 2224  
bdg.dfe@indotara.id



#### Balikpapan Office

Panin Tower Lt. 8 Grand Sudirman  
JL. Jendral Sudirman No.7 Klandasan Ilir,  
Balikpapan Kota - Kalimantan Timur 76114  
021 - 5011 2224  
bpp.dfe@indotara.id



#### Surabaya Office

Japfa Indoland Center, Tower I Lt. 10/1008  
JL. Jendral Basuki Rahmat 129-137  
Surabaya 60271  
031 - 3360 1485  
sby.dfe@indotara.id



#### Bali Office

Benoa Square Lt. 2  
JL. Bypass Ngurah Rai No. 21 A Kedonganan,  
Kuta Badung - Bali Indonesia 80361  
021 - 5011 2224  
bali.dfe@indotara.id



#### Yogyakarta Office

Hartono Mall Yogyakarta Lt. 3  
Kaliwaru, Condongcatur,  
Sleman, Yogyakarta 55281  
021 - 5011 2224  
yog.dfe@indotara.id



#### Singapore Office

Marina Bay Financial Centre Tower 3  
17F, 12 Marina Boulevard  
Singapore - 018982  
021 - 5011 2224  
sing.dfe@indotara.id

